

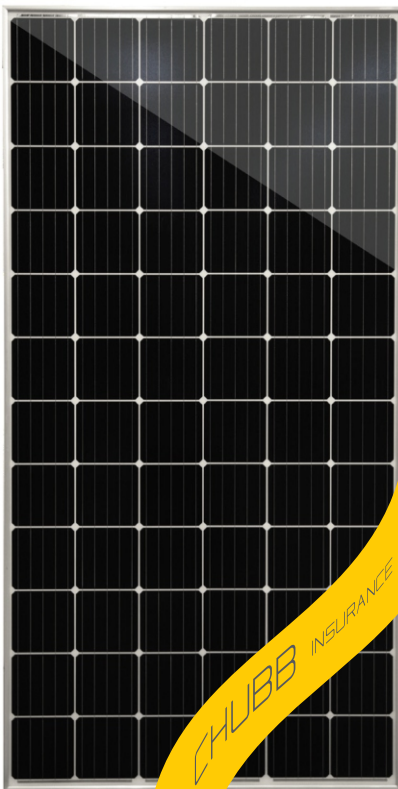
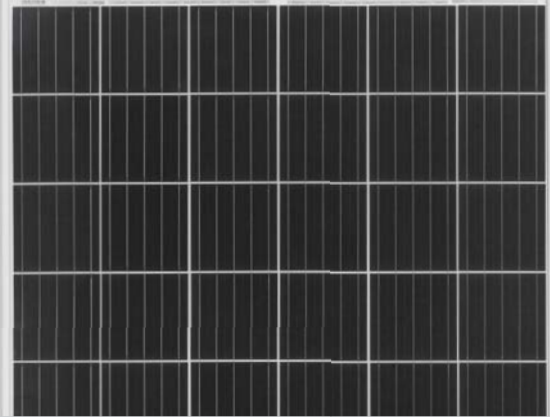
GSE72M 390 Watt MONO PERC MODULE

Positive power tolerance of 0~+3%

ISO9001:2008, ISO14001:2004, OHSAS18001
certified factory

IEC61215, IEC61730, UL1703 certified product

Insurance by **CHUBB**[®]



KEY FEATURES



5 Busbar Solar Cell

5 busbar solar cell adopts new technology to improve the efficiency of modules, offers a better aesthetic appearance, making it perfect for rooftop



High Efficiency

Higher module conversion efficiency (up to 20.17%) benefit from Passivated Emmitter Rear Contact (PERC) technology.



PID Resistance

Excellent Anti-PID performance guarantee limited power degradation for mass production



Low-light Performance:

Advanced glass and surface texturing allow for excellent performance in low-light environment.



Severe Weather Resilience

Certified to withstand: wind load (2400 Pascal) and snow load (5400 Pascal).

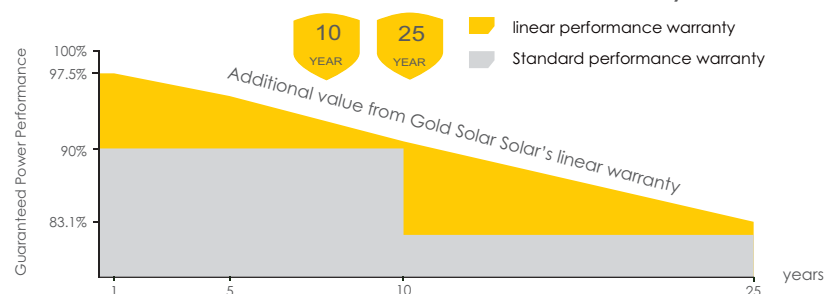


Durability Against Extreme Environmental Conditions

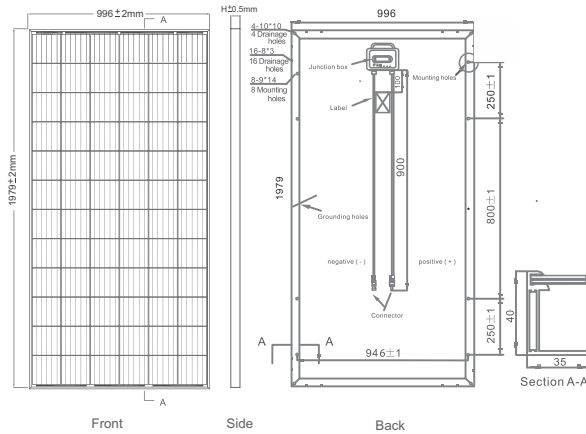
High salt mist and ammonia resistance certified by TUV NORD.

LINEAR PERFORMANCE WARRANTY

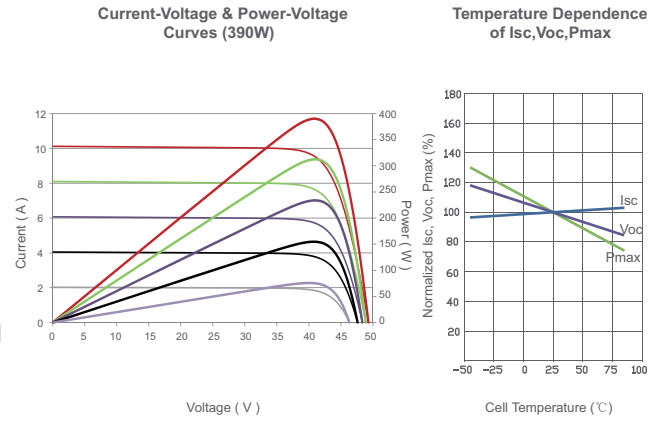
10 Year Product Warranty • 25 Year Linear Power Warranty



Engineering Drawings



Electrical Performance & Temperature Dependence



Packaging Configuration

26pcs/pallet, 22pallet 572pcs/40'HQ Container

Mechanical Characteristics

	Mono PERC 158.75×158.75mm
No. of cells	72 (6×12)
Dimensions	1979×996×40mm
Weight	23.5 kg
Front Glass	3.2mm, Anti-Reflection Coating, High Transmission, Low Iron, Tempered Glass
Frame	Anodized Aluminium Alloy
Junction Box	IP67 Rated
Output Cables	TÜV 1×4.0mm ² , Length 900mm or Customized Length

SPECIFICATIONS

Module Type	GSE72M-375W	GSE72M-380W	GSE72M-385W	GSE72M-390W
	STC	STC	STC	STC
Maximum Power (Pmax)	375Wp	380Wp	385Wp	390Wp
Maximum Power Voltage (Vmp)	39.23V	39.54V	39.81V	40.11V
Maximum Power Current (Imp)	9.56A	9.61A	9.67A	9.72A
Open-circuit Voltage (Voc)	47.96V	48.27V	48.62V	48.94V
Short-circuit Current (Isc)	10.07A	10.13A	10.18A	10.24A
Module Efficiency STC (%)	19.03%	19.28%	19.53%	19.79%
Operating Temperature (°C)	-40°C~+85°C			
Maximum System Voltage	1000VDC (UL) / 1500VDC (IEC)			
Maximum Series Fuse Rating	20A			
Power Tolerance	0~+3%			
Temperature Coefficients of Pmax	-0.36%/°C			
Temperature Coefficients of Voc	-0.29%/°C			
Temperature Coefficients of Isc	0.048%/°C			
Nominal Operating Cell Temperature (NOCT)	45±2°C			