

# EliTe 1500V

## HIGH EFFICIENCY MODULE

ET-P672345WW/WB 345W

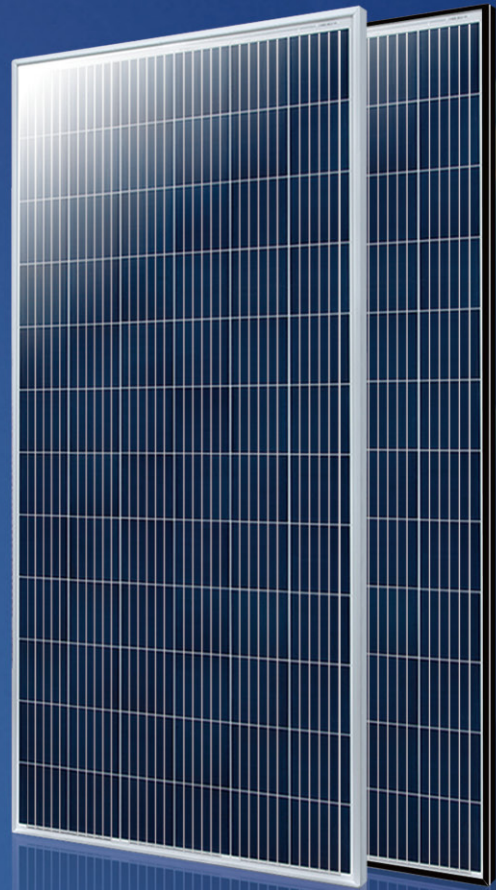
ET-P672340WW/WB 340W

ET-P672335WW/WB 335W


ET-P672330WW/WB 330W


ET-P672325WW/WB 325W


Knowing voltage increase as one of the effective methods to decrease line loss, ET's Product Department and R&D Team are devoted to developing high-efficient module while we are trying any probability of more power output by technology innovation like upgrading voltage level and decreasing line loss. ET 1500VDC Module is designed to realize a lower LCOE of the power plant, by allowing longer cable operation and longer string to pull down combiner-box quantity and narrow cable size.




**1500** Designed for compatible with advanced high voltage 1500V solar plant

 Significant saving on BoS cost

 Extending string length up to 50%

 Enhanced module durability

 Higher system performance

IEC 61215 Ed.2  
IEC 61730



ET SOLAR

Tel: +86 25 86898096

Fax: +86 25 86898097

**ET** Solar

M/ET-PD-EN-EU2019V2

## ELECTRICAL SPECIFICATIONS

Model Type	ET-P672345WW	ET-P672340WW	ET-P672335WW	ET-P672330WW	ET-P672325WW
	ET-P672345WB	ET-P672340WB	ET-P672335WB	ET-P672330WB	ET-P672325WB
Peak Power (Pmax)	345W	340W	335W	330W	325W
Module Efficiency	17.69%	17.43%	17.18%	16.92%	16.66%
Maximum Power Voltage (Vmp)	38.94V	38.42V	37.90V	37.58V	37.28V
Maximum Power Current (Imp)	8.86A	8.85A	8.84A	8.78A	8.72A
Open Circuit Voltage (Voc)	48.32V	47.67V	46.83V	46.65V	46.31V
Short Circuit Current (Isc)	9.52A	9.51A	9.47A	9.35A	9.28A
Power Tolerance	0 to +5W				
Operating Temperature	- 40 ~ + 85°C				
Maximum System Voltage	DC 1500V				
Nominal Operating Cell Temperature	45±2°C				
Fire Safety	Class C				
Maximum Series Fuse Rating	20A				

## MECHANICAL SPECIFICATIONS

Cell Type	156.75mm x 156.75mm
Number of Cells	72 cells in series
Weight	22.6 kg (49.82 lbs)
Dimension	1966×992×40mm (77.40×39.06×1.58 inch)
Max Load	5400 Pascals ( 112 lb/ft <sup>2</sup> )
Junction Box	IP67 rated
Connector	MC4 Compatible
Output cable	4mm <sup>2</sup>

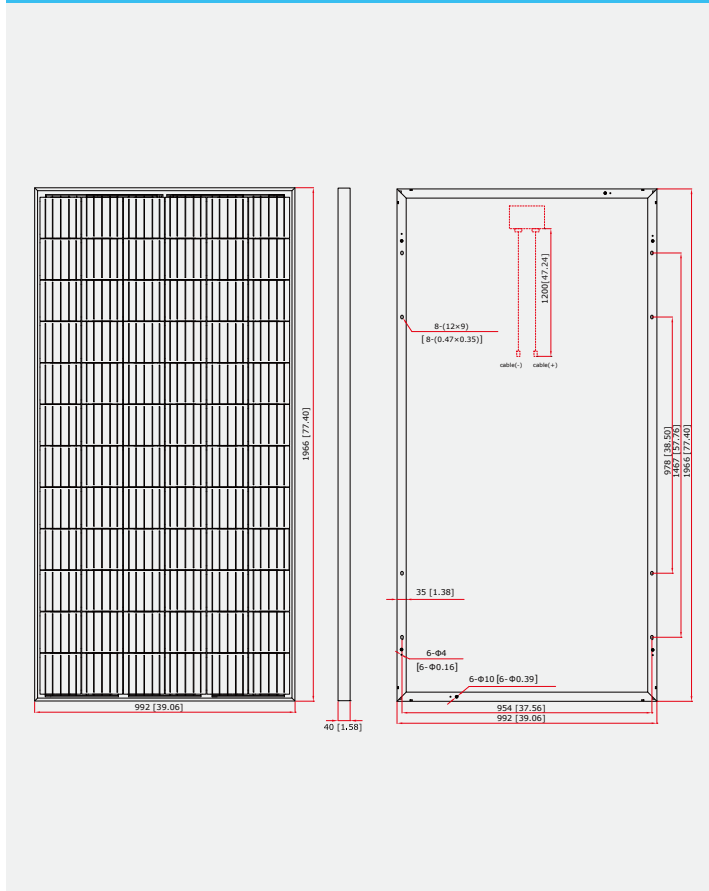
## TEMPERATURE COEFFICIENT

Temp. Coeff. of Isc (TK Isc)	0.04% /°C
Temp. Coeff. of Voc (TK Voc)	-0.34% /°C
Temp. Coeff. of Pmax (TK Pmax)	-0.41% /°C

## PACKING MANNER

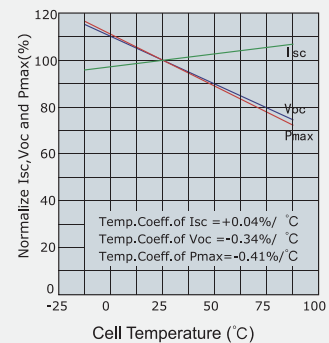
Container	40' HQ
Pieces per Pallet	26
Pieces per Container	572

## PHYSICAL CHARACTERISTICS Unit:mm (inch)

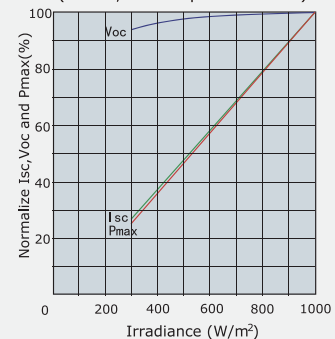


## ELECTRICAL CHARACTERISTICS

### Temperature Dependence of Isc, Voc and Pmax



### Irradiance Dependence of Isc, Voc and Pmax (AM1.5, Cell Temperature 25°C)



**Note:** the specifications are obtained under the Standard Test Conditions (STCs): 1000 W/m<sup>2</sup> solar irradiance, 1.5 Air Mass, and cell temperature of 25°C. The NOCT is obtained under the Test Conditions: 800 W/m<sup>2</sup>, 20°C ambient temperature, 1m/s wind speed, AM 1.5 spectrum.

Please contact [support@etsolar.com](mailto:support@etsolar.com) for technical support. The actual transactions will be subject to the contracts. This parameters is for reference only and it is not a part of the contracts. The specifications are subject to change without prior notice.