

PolyPower Half Cells

ASP P6-72 HC Series 330W-355W

Polycrystalline half cells PV-module



QUALITY & RELIABILITY

Best raw materials, optimized production process and accurate testing makes the quality difference



GERMAN ENGINEERING

Best design by the art of German engineering



SAVE INVESTMENT

Product warranty of 12 years and performance warranty of 25 years



POSITIVE PERFORMANCE TOLERANCE

Up to +5 W plus-tolerance on output



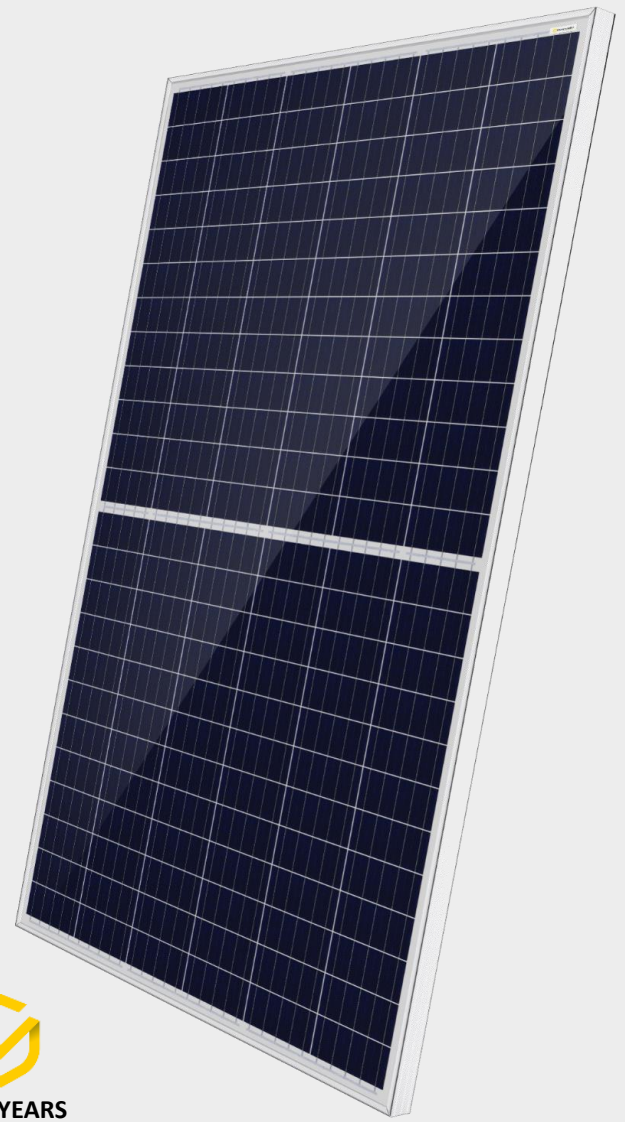
FOR ALL ENVIRONMENTAL CONDITIONS

Resistant against PID, sand, salt and ammonia



STABLE AND STRONG

Capable to bear heavy snow loads up to 5400 Pa and wind loads up to 2400 Pa

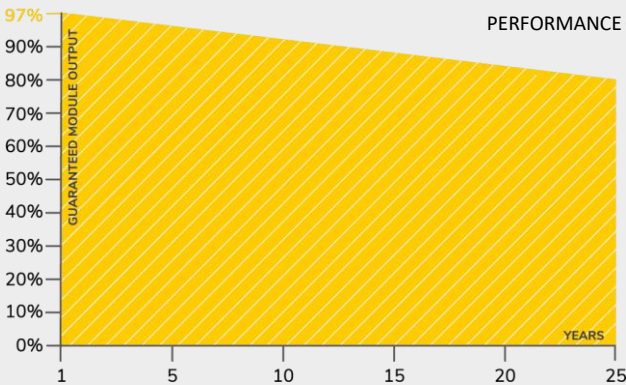


12 YEARS
PRODUCT WARRANTY

OUR PERFORMANCE GUARANTEE



25 YEARS
PERFORMANCE GUARANTEE



CERTIFICATES

SGS
TÜV
SAAR

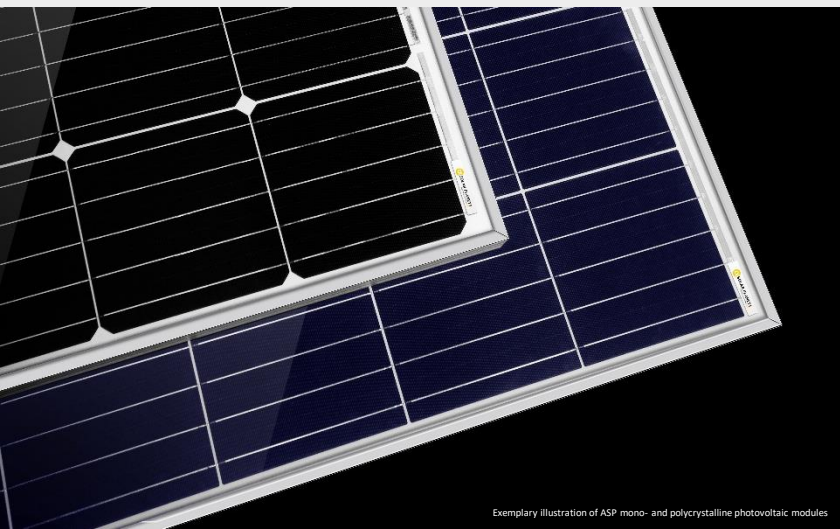
IEC 61215
IEC 61730
PERIODICAL
INCEPTION

SGS

PID RESISTANT
SALT MIST RESISTANT
SAND RESISTANT
CORROSIVE GAS (NH₃)

CE

CEC



α SOLAR PLANET
Enjoy the quality difference

PolyPower Half Cells Module

ASP P6-72 HC Series 330W-355W

TECHNICAL DATA

ASP330P6-60 ASP335P6-60 ASP340P6-60 ASP345P6-60 ASP350P6-60 ASP355P6-60

Maximum power	P _{max} (Wp)	330	335	340	345	350	355
Maximum power voltage	V _{mp} (V)	38.11	38.38	38.60	38.86	39.11	39.36
Maximum power current	I _{mp} (A)	8.66	8.73	8.81	8.88	8.95	9.02
Open-circuit voltage	V _{oc} (V)	45.96	46.24	46.51	46.79	47.05	47.42
Short-circuit current	I _{sc} (A)	9.20	9.46	9.57	9.68	9.74	9.85
Module efficiency	%	16.65	16,9	17.15	17.41	17.66	17.91
Power tolerance	P _{max} (W)	0 / +5					
Maximum system voltage DC	V	1000					
Operating temperature	°C	-40 to +85					
Temperature coefficients of P _{max}	%/°C	-0.39					
Temperature coefficients of V _{oc}	%/°C	-0.33					
Temperature coefficients of I _{sc}	%/°C	0.05					
Nominal operating cell temp. (NOCT)	°C	45 ± 3					

The electrical data apply to standard test conditions (STC): Irradiance of 1000 W/m² with spectrum AM 1.5 and a cell temperature of 25°C.

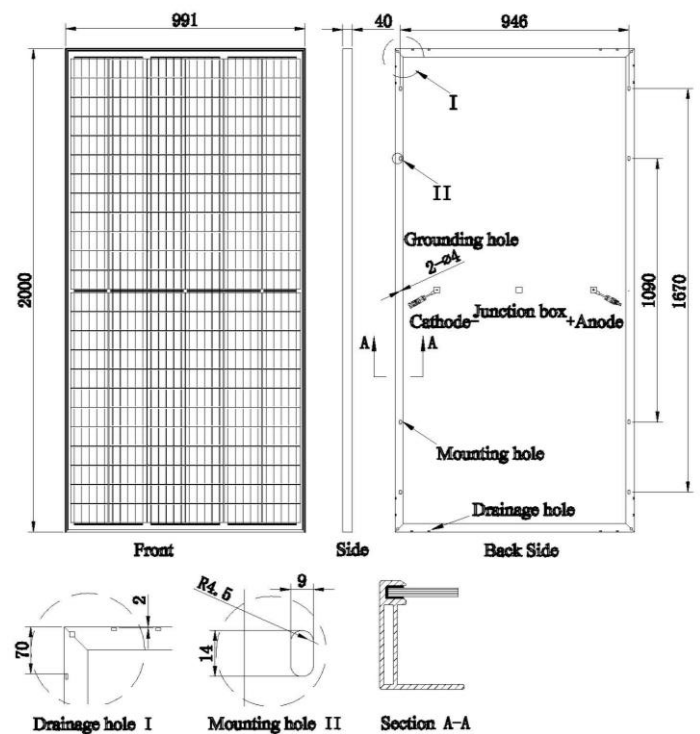
MATERIAL CHARACTERISTICS

Cell type	Polycrystalline 156.75 x 78.38 mm
No. of cells	144 (6 x 24)
Dimensions	2000 x 991 x 40 mm
Weight	19 kg
Junction box	IP 67 rated
Output cable	4 mm ² , 350 mm length
Connector type	MC 4 / MC 4 compatible
Hail resistance	Max. Ø 25 mm, at 23 m/s
Wind load	2400 Pa / 244 kg / m ²
Mechanical load	5400 Pa / 550 kg / m ²

PACKING INFORMATION

Packing configuration	56 pcs / double pallet
Loading capacity	616 pcs / 40 HQ
Size / pallet	2040 x 1120 x 2385mm
Weight	1345 kg / pallet

DRAWINGS



Alpha Solar Planet GmbH
Schwalbenweg 1 g, 86343 Königsbrunn

Tel.: +49 8231 99190 70
Fax: +49 8231 99190 89

E-mail: info@a-s-p.solar
Web: www.a-s-p.solar

