

# MonoPower Basic

ASP M6-72 Series 340W-360W

Monocrystalline PV-module



## QUALITY & RELIABILITY

Best raw materials, optimized production process and accurate testing makes the quality difference



## GERMAN ENGINEERING

Best design by the art of German engineering



## SAVE INVESTMENT

Product warranty of 12 years  
and performance warranty of 25 years



## POSITIVE PERFORMANCE TOLERANCE

Up to +5 W plus-tolerance on output



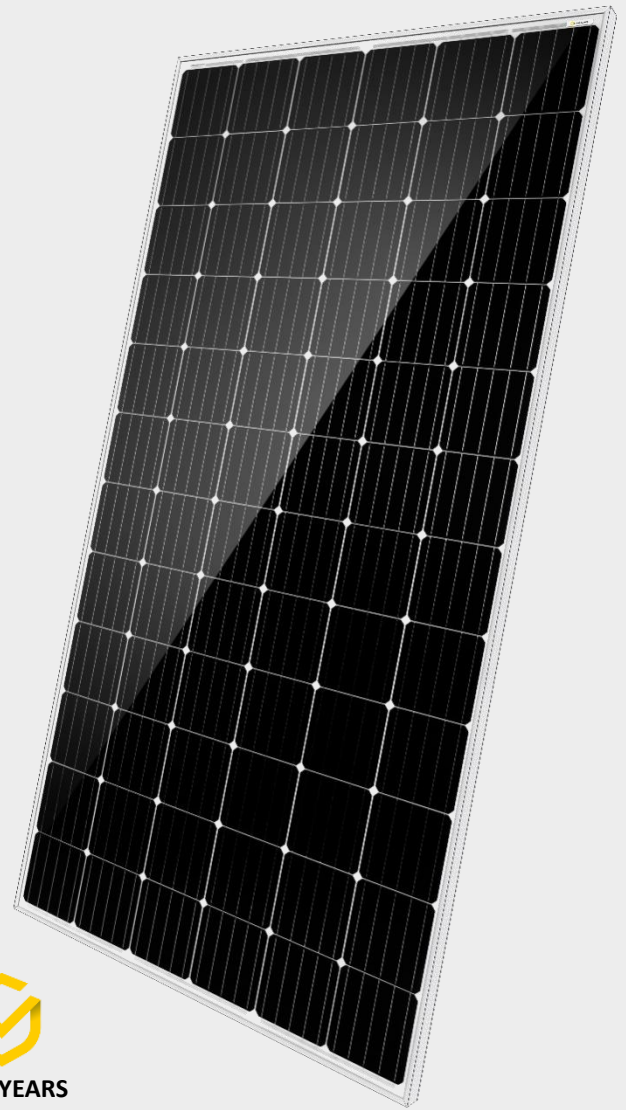
## FOR ALL ENVIRONMENTAL CONDITIONS

Resistant against PID, sand, salt and ammonia



## STABLE AND STRONG

Capable to bear heavy snow loads up to 5400 Pa  
and wind loads up to 2400 Pa

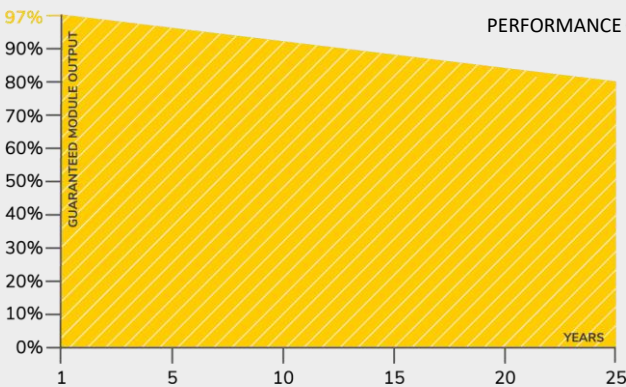


**12 YEARS**  
PRODUCT WARRANTY

## OUR PERFORMANCE GUARANTEE



**25 YEARS**  
PERFORMANCE GUARANTEE



## CERTIFICATES

SGS  
**TÜV**  
SAAR

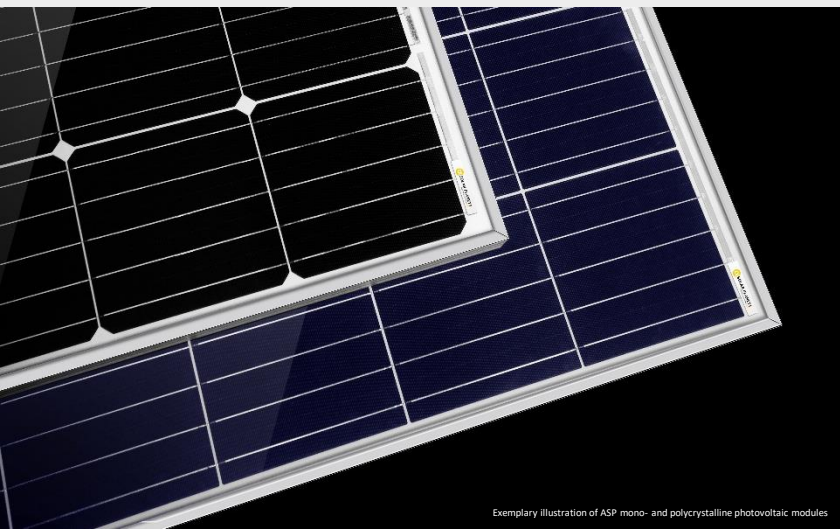
IEC 61215  
IEC 61730  
PERIODICAL  
INCEPTION

**SGS**

PID RESISTANT  
SALT MIST RESISTANT  
SAND RESISTANT  
CORROSIVE GAS (NH<sub>3</sub>)

**CE**

**CEC**



**SOLAR PLANET**  
Enjoy the quality difference

# MonoPower Basic Module

ASP M6-72 Series 340W-360W

## TECHNICAL DATA

ASP340M6-72

ASP345M6-72

ASP350M6-72

ASP355M6-72

ASP360M6-72

Parameter	Unit	ASP340M6-72	ASP345M6-72	ASP350M6-72	ASP355M6-72	ASP360M6-72
Maximum power	P <sub>max</sub> (Wp)	340	345	350	355	360
Maximum power voltage	V <sub>mp</sub> (V)	39,09	39,34	39,46	39,51	39,55
Maximum power current	I <sub>mp</sub> (A)	8.70	8.77	8.87	8.99	9.10
Open-circuit voltage	V <sub>oc</sub> (V)	46,94	47,08	47,15	47,30	47,38
Short-circuit current	I <sub>sc</sub> (A)	9,48	9,51	9,551	9,58	9,62
Module efficiency	%	17,52	17,78	18,03	18,30	18,55
Power tolerance	P <sub>max</sub> (W)	0 / +5				
Maximum system voltage DC	V	1000				
Operating temperature	°C	-40 to +85				
Temperature coefficients of P <sub>max</sub>	%/°C	-0.38				
Temperature coefficients of V <sub>oc</sub>	%/°C	-0.29				
Temperature coefficients of I <sub>sc</sub>	%/°C	0.05				
Nominal operating cell temp. (NOCT)	°C	45 ± 2				

The electrical data apply to standard test conditions (STC): Irradiance of 1000 W/m<sup>2</sup> with spectrum AM 1.5 and a cell temperature of 25°C.

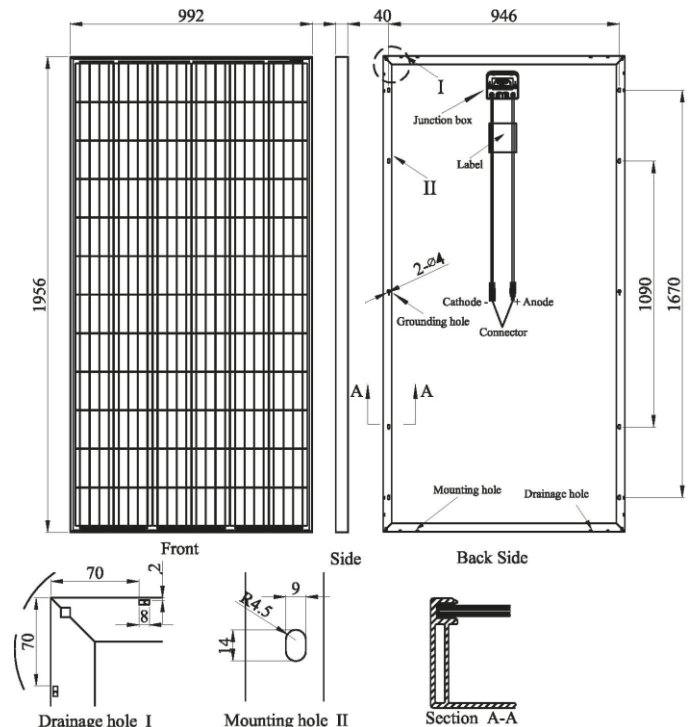
## MATERIAL CHARACTERISTICS

Cell type	Monocrystalline 156.75 x 156.75 mm
No. of cells	72 (6 x 12)
Dimensions	1956 x 992 x 40 mm
Weight	21 kg
Junction box	IP 67 rated
Output cable	4.0 mm <sup>2</sup> , 1100 mm length
Connector type	MC 4 / MC 4 compatible
Hail resistance	Max. Ø 25 mm, at 23 m/s
Wind load	2400 Pa / 244 kg / m <sup>2</sup>
Mechanical load	5400 Pa / 550 kg / m <sup>2</sup>

## PACKING INFORMATION

Packing configuration	56 pcs / double pallet
Loading capacity	672 pcs / 40 HQ
Size / pallet	1985 x 1120 x 2410 mm
Weight	1300 kg / pallet

## DRAWINGS



Alpha Solar Planet GmbH  
Schwalbenweg 1 g, 86343 Königsbrunn

Tel.: +49 8231 99190 70  
Fax: +49 8231 99190 89

E-mail: info@a-s-p.solar  
Web: www.a-s-p.solar

