

MonoPower Basic

ASP M6-60 Series 280W-295W

Monocrystalline PV-module



QUALITY & RELIABILITY

Best raw materials, optimized production process and accurate testing makes the quality difference



GERMAN ENGINEERING

Best design by the art of German engineering



SAVE INVESTMENT

Product warranty of 12 years and performance warranty of 25 years



POSITIVE PERFORMANCE TOLERANCE

Up to +5 W plus-tolerance on output



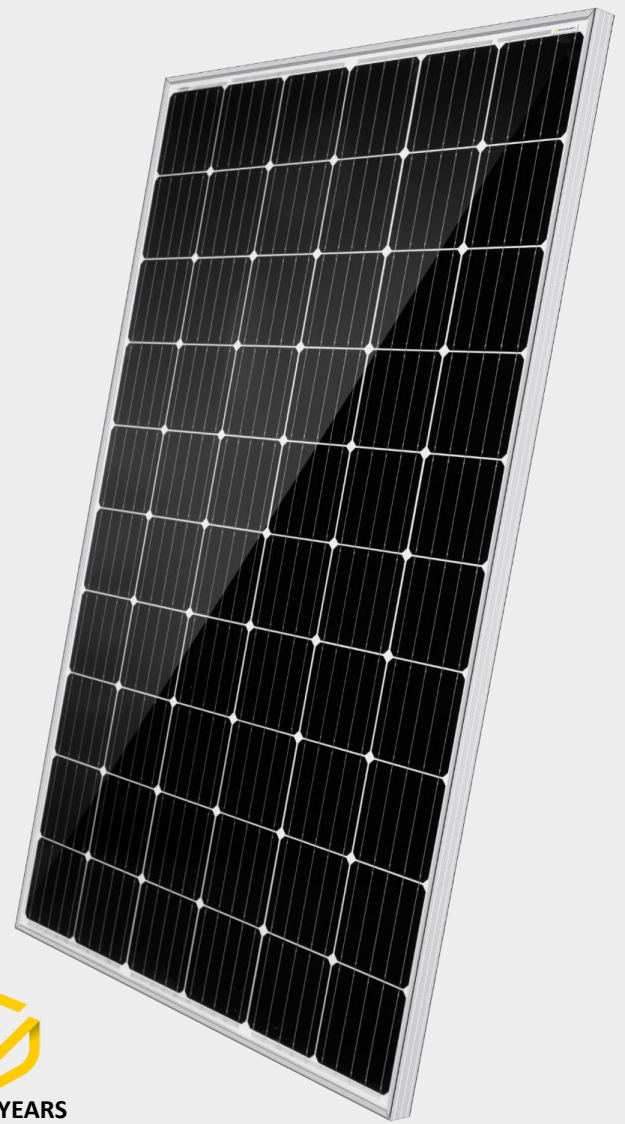
FOR ALL ENVIRONMENTAL CONDITIONS

Resistant against PID, sand, salt and ammonia



STABLE AND STRONG

Capable to bear heavy snow loads up to 5400 Pa and wind loads up to 2400 Pa

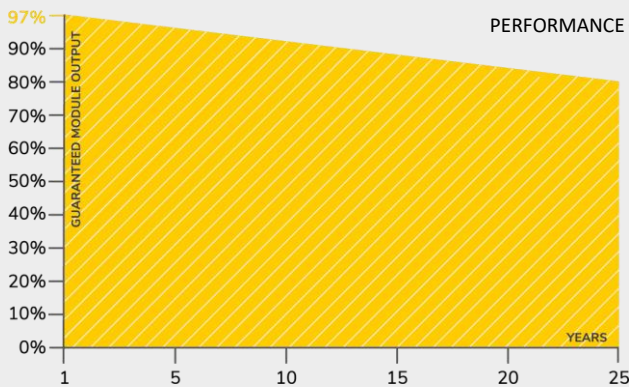


12 YEARS
PRODUCT WARRANTY

OUR PERFORMANCE GUARANTEE



25 YEARS
PERFORMANCE GUARANTEE



CERTIFICATES

SGS
TÜV
SAAR

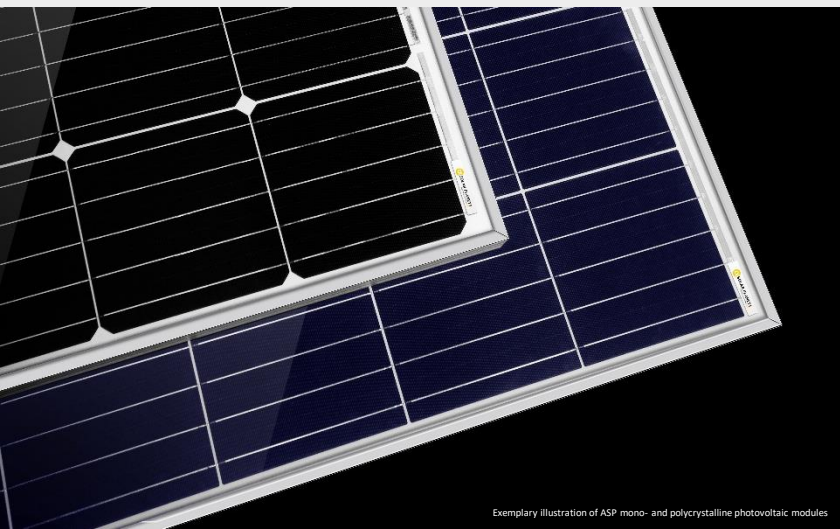
IEC 61215
IEC 61730
PERIODICAL
INCEPTION

SGS

PID RESISTANT
SALT MIST RESISTANT
SAND RESISTANT
CORROSIVE GAS (NH₃)

CE

CEC



α SOLAR PLANET
Enjoy the quality difference

MonoPower Basic Module

ASP M6-60 Series 280W-295W

TECHNICAL DATA

		ASP280M6-60	ASP285M6-60	ASP290M6-60	ASP295M6-60
Maximum power	Pmax (Wp)	280	285	290	295
Maximum power voltage	Vmp (V)	31.92	32.34	32.76	33.17
Maximum power current	Imp (A)	8.76	8.81	8.85	8.89
Open-circuit voltage	Voc (V)	38.52	38.73	38.94	39.14
Short-circuit current	Isc (A)	9.44	9.49	9.52	9.57
Module efficiency	%	17.10	17.41	17.71	18.02
Power tolerance	Pmax (W)		0 / +5		
Maximum system voltage DC	V		1000		
Operating temperature	°C		40 to +85		
Temperature coefficients of Pmax	%/°C		-0.38		
Temperature coefficients of Voc	%/°C		-0.29		
Temperature coefficients of Isc	%/°C		0.05		
Nominal operating cell temp. (NOCT)	°C		45 ± 2		

The electrical data apply to standard test conditions (STC): Irradiance of 1000 W/m² with spectrum AM 1.5 and a cell temperature of 25°C.

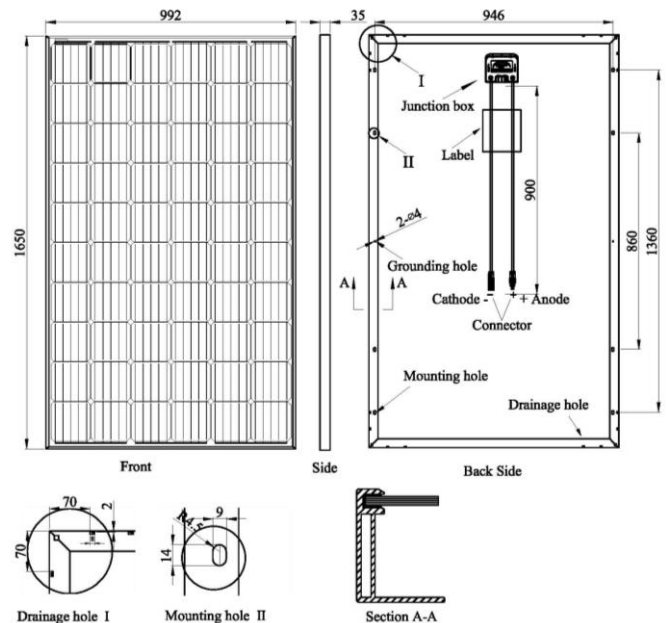
MATERIAL CHARACTERISTICS

Cell type	Monocrystalline 156.75 x 156.75 mm
No. of cells	60 (6 x 10)
Dimensions	1650 x 992 x 35 mm
Weight	17,5 kg
Junction box	IP 67 rated
Output cable	4.0 mm ² , 900 mm
Connector type	MC 4 / MC 4 compatible
Hail resistance	Max. Ø 25 mm, at 23 m/s
Wind load	2400 Pa / 244 kg / m ²
Mechanical load	5400 Pa / 550 kg / m ²

PACKING INFORMATION

Packing configuration	64 pcs / double pallet
Loading capacity	896 pcs / 40 HQ
Size / pallet	1685 x 1135 x 2390 mm
Weight	1220 kg / pallet

DRAWINGS



Alpha Solar Planet GmbH
Schwalbenweg 1 g, 86343 Königsbrunn

Tel.: +49 8231 99190 70
Fax: +49 8231 99190 89

E-mail: info@a-s-p.solar
Web: www.a-s-p.solar



© 2019 Alpha Solar Planet- All rights reserved - Errors and/or modifications excepted.