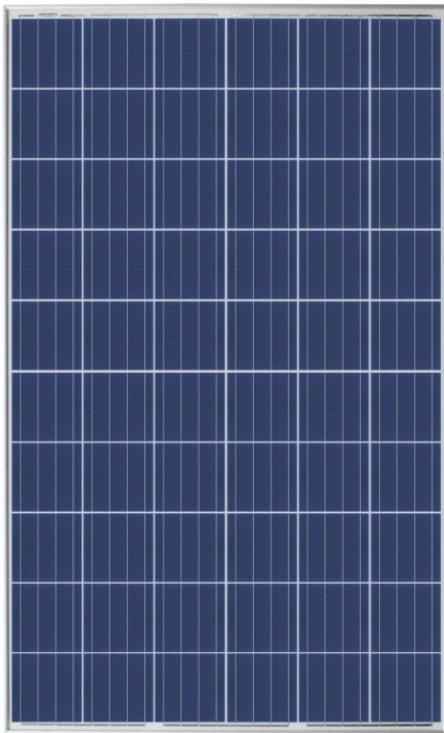
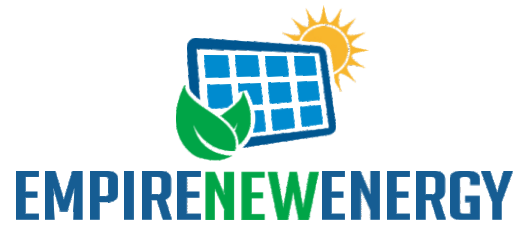
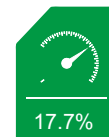


EMP-***P60AH
 POWER OUTPUT RANGE
270-290



POWER TOLERANCE



MAXIMUM EFFICIENCY



• Increased module robustness to minimize micro-cracks



Pass class C fire test



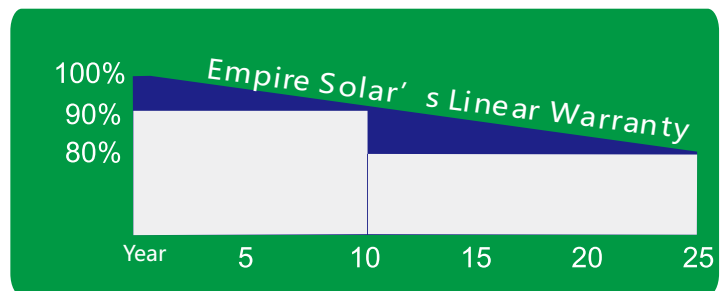
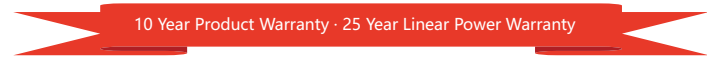
25 Year Linear Power Warranty

Comprehensive Products And System Certicates

IEC61215/IEC61730/UL1703/IEC61701/IEC62716
 ISO 9001: Quality Management System
 ISO 14001: Environmental Management System
 OHSAS 18001: Occupation Health and Safety Management System



LINEAR PERFORMANCE WARRANTY





EMP-(270-290)P60AH

ELECTRICAL DATA (STC)

Peak Power Watts-PMAX (Wp)	270	275	280	285	290
Power Tolerance	±3%				
Binning Tolerance	0~+5				
Maximum Power Voltage-VMPP (V)	31.3V	31.7V	32.0V	32.3V	32.6V
Maximum Power Current-IMPP (A)	8.63A	8.69A	8.76A	8.83A	8.90A
Open Circuit Voltage-VOC (V) (±2%)	38.5V	38.6V	38.7V	38.8V	38.9V
Short Circuit Current-ISC (A) (±2%)	9.09A	9.20A	9.32A	9.43A	9.54A
Module Efficiency (%)	16.4%	16.8%	17.1%	17.4%	17.7%

STC: Irradiance 1000W/m², Cell Temperature 25°C, Air Mass AM1.5

MECHANICAL DATA

Solar Cells	Multicrystalline 156.75 × 156.75 mm (6 inches)
Cell Orientation	60 cells (6 × 10)
Module Dimensions	1650 × 992 × 35/40mm
Weight	18.5kg/20kg
Glass	3.2 mm (0.13 inches), High Transmission, AR Coated Tempered Glass
Backsheet	White
Frame	Silver Anodized Aluminium Alloy
J-Box	IP 65 or IP 67 rated
Cables	Photovoltaic Technology Cable 4.0 ² mm (0.006 inches)
Connector	T01

TEMPERATURE RATINGS

Temperature Coefficient of Pmax	-0.350%/°C
Temperature Coefficient of Voc	-0.350%/°C
Temperature Coefficient of Isc	0.058%/°C

MAXIMUM RATINGS

Operational Temperature	-40 + 85°C
Maximum System Voltage	1500V
Max Series Fuse Rating	15A

(DO NOT connect Fuse in Combiner Box with two or more strings in parallel connection)

WARRANTY

10 year Product Workmanship Warranty
25 year Linear Power Warranty

PACKAGING CONFIGURATION

Modules per box: 30pcs/27pcs
Modules per 40' container: 840 pcs/756pcs
Modules per 35' container: 896 pcs/812pcs

