



**CABERA SOLAR**  
German technology solar panel

## Monocrystalline Module Models

CBR-400W-72-9BB

### Electrical Specifications

\*STC : Irradiance 1000W/m<sup>2</sup>, AM1.5 spectrum, module temperature 25°C

Model type	CBR-400W-72-9BB
Peak power (Pmax)	400W
Cell Efficiency	22.70%
Maximum power voltage (Vmp)	41.1V
Maximum power current (Imp)	9.74A
Open circuit voltage (Voc)	48.4V
Short circuit current (Isc)	10.30A
Power Tolerance	±3%
Maximum system voltage	1000V
Series fuse rating (A)	15
Number of bypass diode	3

### Temperature Coefficients

Current Temperature Coefficient $\alpha(Isc)$	0.03%/°C
Voltage Temperature Coefficient $\beta(Voc)$	- 0.32%/°C
Power Temperature Coefficient	-0.42%/°C
Nominal Temperature Of Cells(NOTC)	46±2°C
Application Temperature Range	-40~+85°C

### Mechanical Characteristics

Dimensions :	1970 x 992 x 45mm (58.27x26.38x1.38 inch)
Weight:	20.6kg (45.73 lbs)
Solar Cells:	72 cells in series(6x 12)
Construction:	High-transmission low-iron tempered glass , EVA, TPT/TPE
Frame:	Anodized aluminum is mainly for improving corrosion resistance. Color: silver

### Output

Cable	LAPP(4 mm <sup>2</sup> )
Lengths	900mm(-) and 900mm(+)
Connector	MC4 Plug Type IV

### Module Warranty:

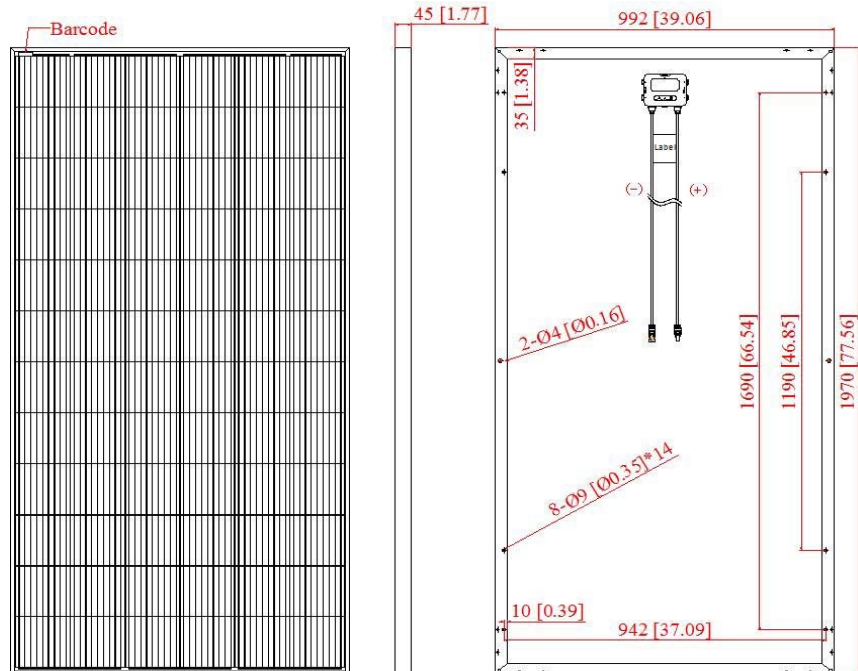
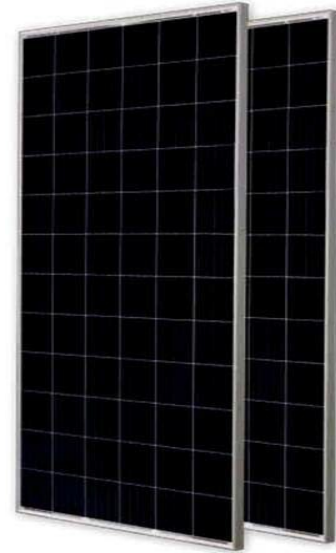
25-year limited warranty of 80% power output;

10-year limited warranty of 90% power output;

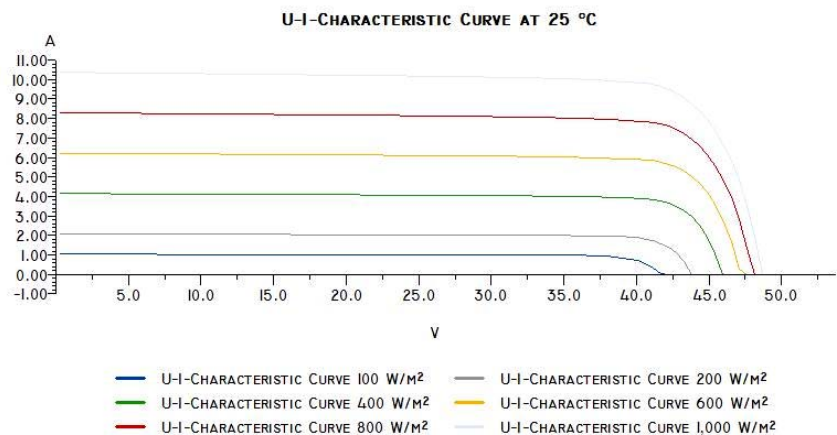
10-year limited warranty of materials and workmanship.

**Note:** This publication summarizes product warranty and Specifications which are subject to change without notice

Product photos are for reference only, on behalf of actual product.



Module Diagram



Electrical Performance