

NEOSUN TPI - 500kW and 630kW

Features



RELIABLE

- Reliable power supply through either self-supply or supply from grid
- High-end cooling technology

98.7%

HIGH EFFICIENCY

- Max efficiency 98.7%, European efficiency over 98.5%
- 2 MPPT
- Modular design of boost and inverter circuit enable intelligent sleep and easy-maintenance
- Excellent over-load capacity ensure energy production under strong sunshine



GREEN AND SAFE

- Innovative design reduces harmonics, THDi <2%
- Adapt to bad grid condition



INTELLIGENT

- Remote monitor and on-line system management
- Smart bus capacitor life time detection



EASY-APPLICATION

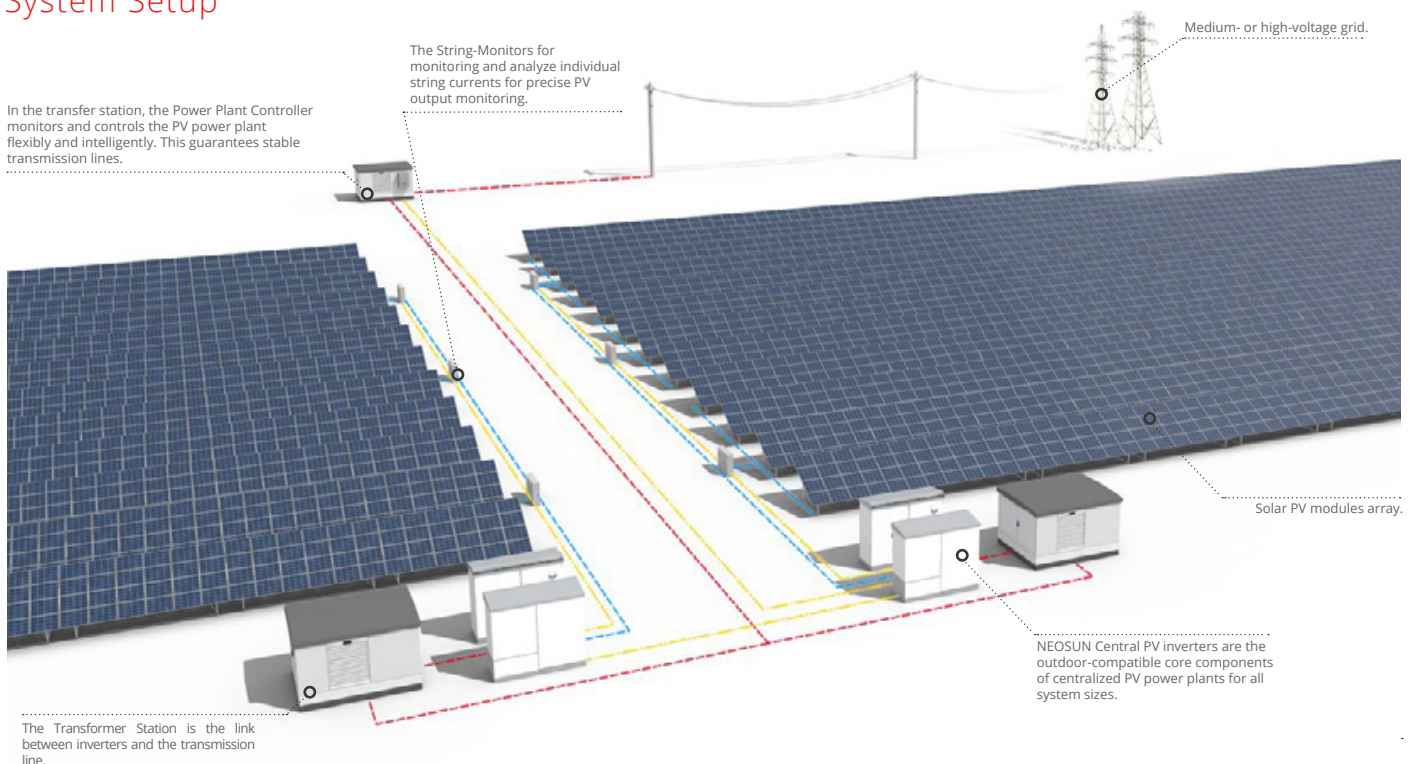
- Built-in DC breaker, which can save costs
- Reliable components and easy to maintain



Overview

Both NEOSUN TPI-500K and TPI-630K are endowed with an innovative design, deliver outstanding performance, and ensure the simple installation while maximizing returns either for medium or large scale solar power plants. In combination with an external transformer, the NEOSUN Central PV Inverter can be connected to any utility grid. With a peak efficiency of 98.7%, it outperforms all other inverters in its class.

System Setup



Input (DC)	TPI-500K	TPI-630K
Max DC input power	610kW	714kW
Max DC input voltage	1000VDC	
Starting voltage	500VDC	
MPPT voltage range	480~920VDC	
Full load MPPT voltage range	500~850VDC	
Rated voltage	620VDC	
No of MPPT	2	
Max input current	1170A	1474A
Input string numbers	8 (Integrated DC breaker)	
Output (AC)		
AC nominal power	500kW	630kW
Max nominal apparent power	600kW	700kW
Overload capacity	120%	110%
Max output current	1100A	1270A
Nominal AC voltage	315VAC	
AC voltage range (Adjustable)	250~362VAC	
AC grid frequency	50Hz/60Hz	
AC grid frequency range (Adjustable)	44~55/54~65Hz	
Power factor	>0.99 at rated power	
Power factor (Adjustable)	0.8 leading...0.8 lagging	
Harmonics (THD)	<2% (Nominal power)	
DC current component	<0.5 (Nominal output current)	
Efficiency		
Max efficiency	98.7%	98.8%
European efficiency	98.5%	
MPPT efficiency	99.9%	
Display and communication		
Display	7" colorful LCD touch screen	
RS485	Modbus	
USB	Yes	
Wi-Fi\PLC\GPRS	Optional	
General data		
Net Dimensions (W/H/D)	1500x2000x650 mm	
Gross Dimensions (W/H/D)	1620x780x2221 mm	
Net Weight/Gross Weight	1300/1350 kg	
Working temperature	-30°C to +55°C	
Cooling	Fans	
Exhaust demand	4800m ³ /h	
Ingress protection	IP20	
Humidity	0~95%, Non-condensing	
Noise	≤60dB	
Altitude	6000m (<3000m no degrading)	
Night consumption	<50W	
No-load loss	<1000W	
Warranty	5 years	