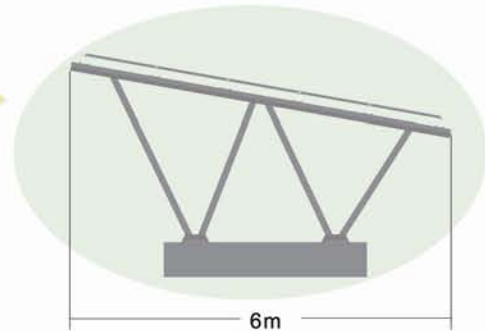




All-aluminum Carport Mounting System



A1 : Single Row Carport



System Introduction

This All-aluminum carport mounting system adopts AL6005-T5, with some parts pre-assembled before delivery, which helps to save onsite installation time and labor cost.

Advantages

- ★ High Water Resistance
- ★ Strong Anti-corrosive, Lightweight, High Intensity
- ★ To be installed over existing car park, help to economize land utilization
- ★ Able to manufacture according to customers' design & Solution

Note: Customized Design Available as per Customer Requirements.

20
years
duration

12
years
warranty

All-aluminum Carport Mounting System

Best Seller

20
years
duration

12
years
warranty

A1: Single Row Carport



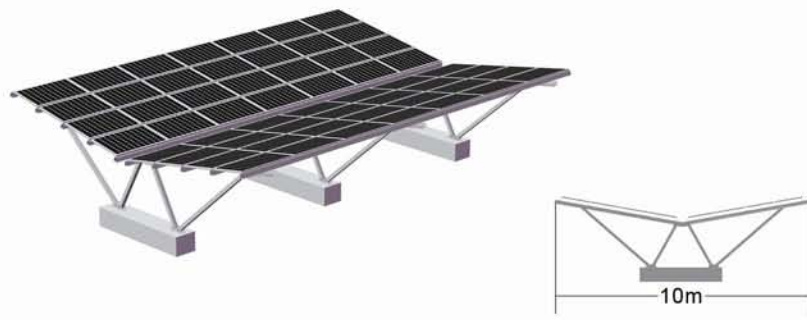
Items	Descriptions
Tilt Angle	5°~ 20°
Ground Clearance	2000mm
Applicable Module Array	5 or 6 rows
Applicable Foundation	Cement Block
Spacing (N-S)/(E-W)	2000mm/5000mm

A2: Single Row Carport



Items	Descriptions
Tilt Angle	5°~ 20°
Ground Clearance	2000mm
Applicable Module Array	4 or 5 rows
Applicable Foundation	Cement Block
Spacing (N-S)/(E-W)	1600mm/5000mm

A3: Double Row Carport



Items	Descriptions
Tilt Angle	5°~ 20°
Ground Clearance	2000mm
Applicable Module Array	4 or 5 rows
Applicable Foundation	Cement Block
Spacing (N-S)/(E-W)	2500mm/5000mm