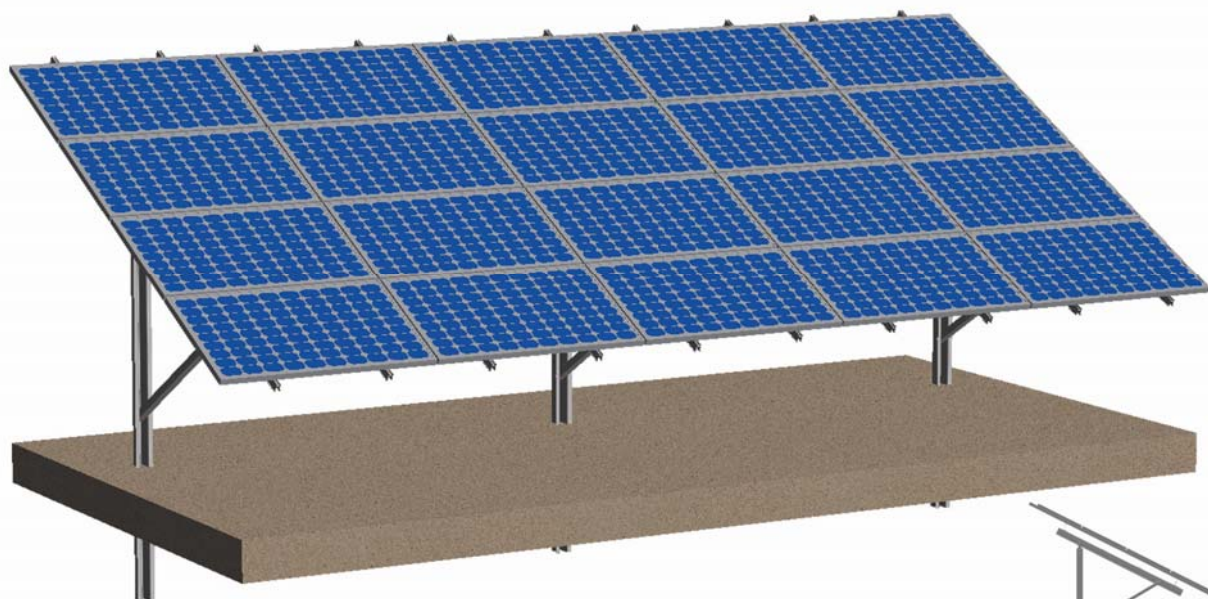


Carbon Steel Single-pillar Mounting System



System Introduction

GMS Carbon Steel Single-pillar Mounting System, with main body made of carbon steel, splice kits and clamps made of anodized aluminum (AL6005-T5) and stainless steel SUS304, has advantages of high-strength and corrosion resistance. The pillars are designed to be driven directly into the soils, which enable higher strength and quicker installation. The adequate adjusting space can solve the problem of possible construction error.

Component Parts

U profile steel pillar, Z profile steel rail, slant reinforced pipe, rail splices, rail clamps, mid and end clamps

Quality Testing

This system has passed tension and compression tests, proven to be high stability and reliability.

20
years
duration

12
years
warranty

Spec	Descriptions
Wind Load	60m/s
Snow Load	1.5KN/m ²
Ground Clearance	300mm—1500mm
Materials	Carbon Steel, AL6005-T5, SUS304
Tilt Angle	5°~ 40°
Module Size	Any Sizes
Installation Site	Open Field
Standard	AS/NZS 1170.2, SGS