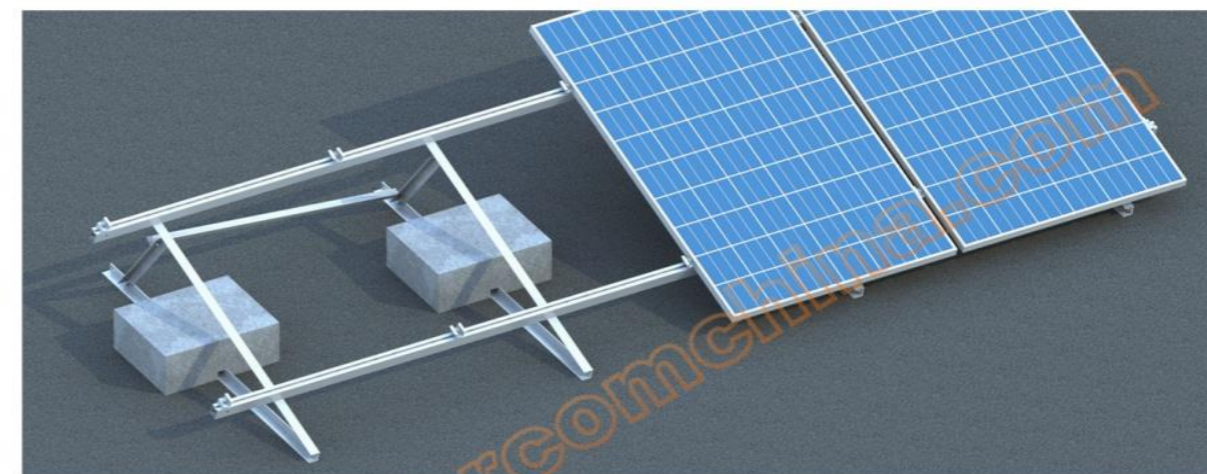


Adjustable Flat roof mounting system
 ---Universal System

10
YEARS
WARRANTY

25
YEARS
SERVICE LIFE

SC-VRC1-1 is specially designed for easy and fast installation of PV panels on flat roofs and surfaces. The triangular design provides a simple, strong base for the system. The load-bearing component all adopt L-shape profile to achieve cost economy. Panels are either set to a fixed angle or customizable degree.



Smart foldable design which make it easy to mount and transport.

Model NO.	SC-VRC1-1
Design standard:	JIS C 8955:2001 GB 50797-2012 GB 50009-2012 Customized
Wind load:	42m/s
Snow load:	1.4KN/m2
Basement:	Pressed block
Tilt Angle:	Adjusted Customized
Panel Orientation:	Landscape Portrait
Materials:	Al6005-T5/SUS304

Your advantages:

- This system is suitable for low load flat roof or space restricted roof.
- Customizable module installation inclination.
- No roof leaking because there is no breakage in original roof structure