



CG Alu-terrain ground mounting system

Optimal cost-performance ratio ground mount

CG Alu-terrain is a cost optimized design based on Alu-terrain, the supporting beam is delivered with highest pre-assembly, fast and easy at site. It can be adapted to different local conditions, e.g. landfill or disposal areas. The design is carried out by experienced engineers, this is important as high loads caused by wind and snow. Depending on the projects input, the system is connected to the ground using ground screw or concrete foundations, and variable inclination and height makes plant design flexible. Made of aluminum, the NEW Alu-terrain is an extremely low-maintenance system during its entire life span, and fully recyclable.



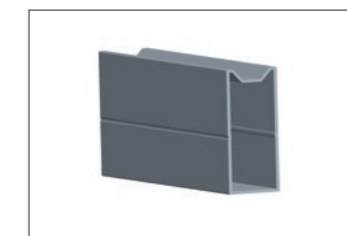
Features

Install site	Open terrain, landfill, and disposal
Elevation angle	Up to 60°
Wind speed	Up to 60m/s (216kmh/133mph)
Snow load	Up to 50cm
Standard	AS/NZ1170.2:2011, JIS C 8955:2011, other international standards
Distance between footings	Depending on load condition, refer to manual
Clearance	Up to request
PV module	Framed, unframed
Module orientation	Landscape, portrait
Size of module array	Any layout up to site condition
Foundation	Concrete base or ground screw
Material	Anodized aluminum 6005 T6, stainless steel 304, hot-dipped galvanized steel Q235B
Color	Natural, powder coated
Module widths	Maximum 1.0m
Module lengths	Maximum 2.0m
Warranty	10 years limited warranty, refer to warranty doc

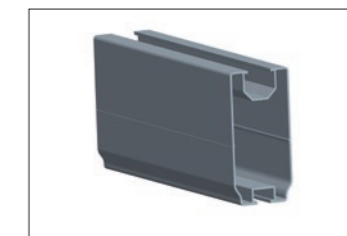
•All profiles are available in various lengths or can be cut to measure.



Rail



Rail connector



Supporting Beam



Unfold at site



Open terrain



Framed module



Unframed module



Orientation landscape



Orientation portrait