

2-rows arrangement

Carport solar mounting system

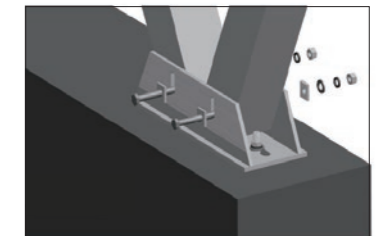
Economical multi-function structure for solar purpose

Carport solar mounting system offers a simplified and economic solution providing shade for parking and solar power generation, it is designed with different options for both single and double rows of parking, tailored for most module types, orientations, and inclinations. Various foundation options include precast concrete, bored pier and ground screw. Long spans between foundations reduce cost and simplify the installation process. Solar carport is one of the fastest growing trends in photovoltaic market, effectively uses existing parking space, streamlined design making it ideal choice to present environmental friendly image or work as electrical vehicle charging station.



Features

Install site	Open terrain
Elevation angle	Recommend below 30°
Wind speed	Up to 88m/s (316.8kmh/196.9mph)
Snow load	Up to 150cm
Standard	AS/NZ1170.2:2011, JIS C 8955:2011, other international standards
Distance between footings	5000mm above
Clearance	Up to request
PV module	Framed, unframed
Module orientation	Landscape, portrait
Size of module array	Any layout up to site condition
Foundation	Pre-cast concrete, bored pier, ground scrow
Material	Anodized aluminum 6005 T6, stainless steel 304, hot-dipped galvanized steel Q235B
Color	Natural, powder coated
Module widths	Maximum 1.0m
Module lengths	Maximum 2.0m
Warranty	10 years limited warranty, refer to warranty doc



Foot detail



Top detail



Front view

• All profiles are available in various lengths or can be cut to measure.



Open terrain



Framed module



Unframed module



Orientation landscape



Orientation portrait