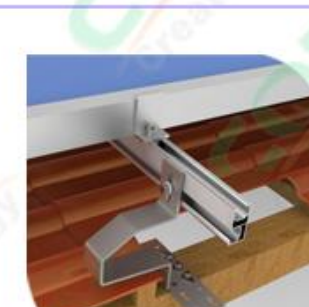
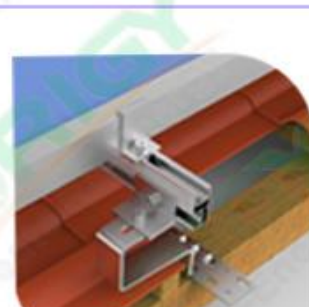


CORIGY Tile Roof Solar Mounting System is designed for residential and commercial applications. We design the clamps according to the rooftop shape and size to make sure enables surprisingly quick and easy installation for every roof. Outstanding quality of stainless steel and aluminum ensure the most durable brackets. Please choose the suitable hook for your roof or tell us your roof shape and we'll pick up the suitable one for you.

## Detailed Information

Installation site:	pitched tile, slate or shingle roof
Tilt angle:	roof(10-60degrees)
Maximum wind speed:	60 m / s
Snow load:	within 1.4KN/m <sup>2</sup>
Applicable module:	framed or frameless
Solar panel direction:	horizontal or portrait
Material:	aluminum 6005 -T5 & stainless steel 304
Guarantee years:	10 years
Service years:	around 25 years
Color:	natural color (silver) or the customize
Surface preparation:	anodizing, stainless

## Overview



## General components

Corigy carries many components for various tile, slate and shingle roof racking solutions. Here are some main components:



- Name: mid clamp
- Function: fix panel on the rail



- Name: end clamp
- Function: fix panel on the rail



- Name: cable clamp
- Function: fix cable



- Name: rail
- Function: support panels



- Name: rail connection
- Function: connect two rails



- Name: cable clamp
- Function: fix cable



- Name: braided copper wire
- Function: rail connection conductive



- Name: conductive film
- Function: ground conductive



- Name: tapping screw
- Function: fix hook on the girder

## Hook components



- Model: CPR-C01
- Function: support the rail



- Model: CPR-C1A
- Function: support the rail



- Model: CPR-C04
- Function: support the rail



- Model: CPR-C02
- Function: support the rail



- Model: CPR-C2A
- Function: support the rail



- Model: CPR-C4A
- Function: support the rail



- Model: CPR-C03
- Function: support the rail



- Model: CPR-C05
- Function: support the rail



- Model: CPR-C4B
- Function: support the rail



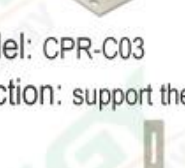
- Model: CPR-F01
- Function: support the rail



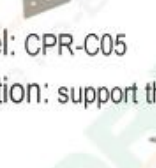
- Model: CPR-F02
- Function: support the rail



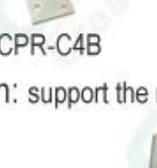
- Model: CPR-F03
- Function: support the rail



- Model: CPR-S01
- Function: support the rail



- Model: CPR-S04
- Function: support the rail



- Model: CPR-F04
- Function: support the rail



- Model: CPR-S02
- Function: support the rail



- Model: CPR-S03
- Function: support the rail



- Model: CP-SR-01
- Function: support the rail

**Note:** The component is not limited as above. We carry high range of tile roof hooks for various tile, slate and shingle roofs, if you can't find components above, please feel free to contact us for more details, moreover we provide OEM service.

## Why CORIGY Tile Roof Solar Mounting System

### Versatile Application

—With a full range of roof hooks and brackets, corigy roof is suitable for most roofing types, including pitched tile roofs, metal roofs, concrete roofs and even slate roofs.

### Great Compatibility

—Designed as a universal PV mounting system, corigy roof is compatible with most of the major framed and frameless PV modules on the market.

### Long Lifespan

—All mounting structural components are made of high class stainless steel and anodized aluminum alloy, their high resistance to corrosion and they are designed for twenty-year service life and backed by ten years warranty

### Low Labor Cost

—Exclusive proprietary parts makes the design of structure is very simple and easy to install, highly pre-assembled parts by corigy factory making safe and cost effective PV mounting system.

## Projects show



## package and delivery



## FAQ

### Q: Are you a factory or trading company?

A: We are one of the biggest factories in China who have been TUV certified and specialized in producing solar mounting system, we can supply many kinds of mounting system for different install conditions, flat roof, pitched roof and ground, etc.

### Q: Where is your factory located? How can I visit there?

A: Our factory is located in Xiamen city, Fujian province, China. You can fly to Xiamen airport in Fujian directly, all our clients, from home or abroad, are warmly welcome.

### Q: How can I get some samples?

A: We can honored offer you samples according your inquiry.

### Q: How does your factory do regarding quality control?

A: We do take product quality very seriously, we have a strict quality control system which has passed ISO international certification, and we have been always strictly adhered to these quality management systems.

### Q: What information do I need to give you?

A: For the detailed solution and quotation, we need some more details as below:

1. Solar panel quantity and dimension (length \* width \* thickness)

2. Solar panel direction (horizontal or portrait)

3. Max wind load? And snow load?

4. Solar panel layout (rows \* lines)

5. Roof shape and size (If you have roof drawing it will be best)