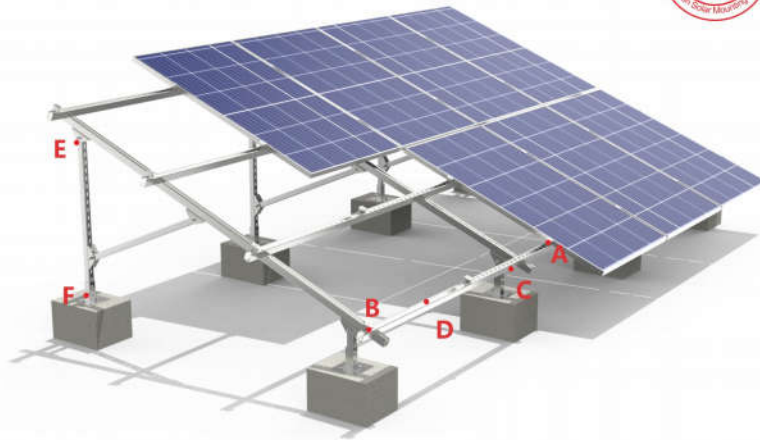


# Flat roof steel mounting

(SS-FRM-03)



## System introduction

Flat roof steel mounting is a widely used low-cost and suitable for concrete flat roof. We use hot galvanized Q235 steel for structure material. Stainless steel 304 or hot-dip galvanized fasteners can be selected according to customers' needs. According to the specific conditions of the project, the height and angle can be adjusted. On the basis of meeting the mechanical calculation, customers can achieve the best cost.

## Component List



## Technical Data

Installation site: Concrete Flat Roof  
 Installation angle: 5-45 degree  
 PV modules: framed or unframed  
 Module layout: Vertical or horizontal  
 Max wind speed: 45m/s  
 Material: Hot galvanized Q235 steel & SUS304, hot galvanized fasteners  
 Color: Silver Gray  
 Standards: BS6399, JISC 8955, Eurocode 1, DIN 1055, AS/NZS 1170 and other standards  
 Warranty: 10 years warranty

