



Steel Ground Mounting Structure

A series, Royal, 4*n PV modules

Design Features:

Model: GM-A-Lpv-ST

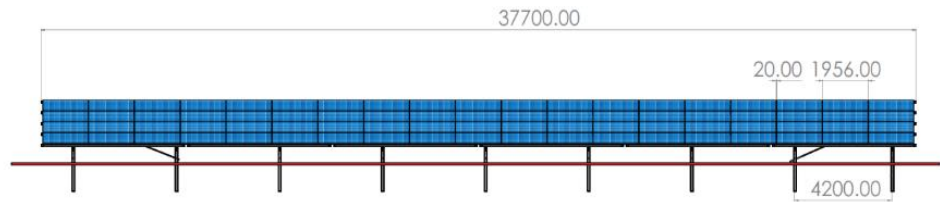
Use: Ground mounting system

Max wind load: Up to 138 km/h

Max snow load: Up to 1.4 KN/m²

Type: Fixed structure

Panel orientation: Landscape



GM-A-4Lpv-ST / 4 panels in landscape

Method of mounting:

1. Rammed poles. / 2. Concrete foundation.

Options:

Qty. of Panels	Panel Orientation
4*n	4 panels in landscape

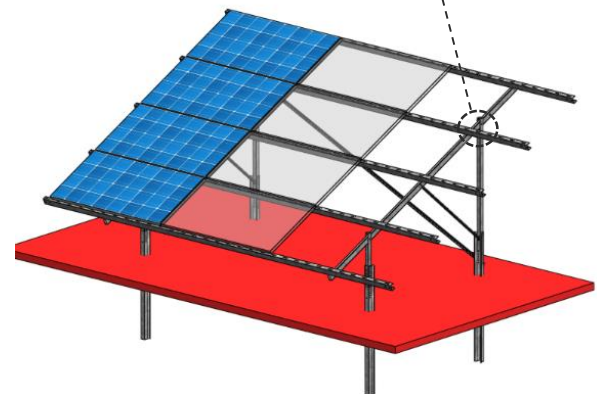
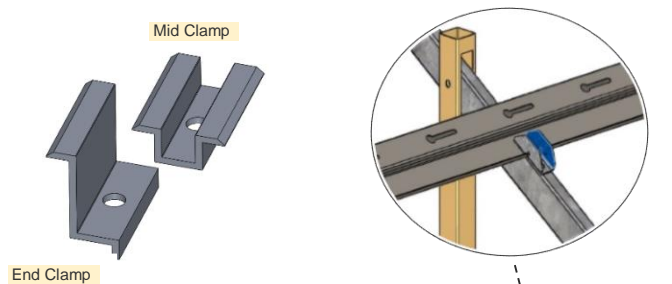
Material Features:

Structure: Hot-dip galvanized steel with a standard of Zinc 80-120 (ASTM A526) which is produced by Esfahan's Mobarakeh Steel Co.

Module Rail: Aluminum EN AW-6063 T66 or hot-dip galvanized steel with a standard of Zinc 80-120 (ASTM A526).

Fixtures: Hot-dip galvanized steel (grade 8.8).

Clamps: Aluminum EN AW-6063 T66.



Your Advantage:

1. Due to the use of rectangular hollow section, the resistance increases dramatically, which reduces both pile repetition in each array and the overall weight of the mounting system in MW scales. This special design makes installation more easy and fast.
2. Reduction in total prices and labor cost.
3. Wide range of module tilt.
4. No need for additional joints to connect sections.
5. Ability to extend arrays with no restriction.
6. 10-year warranty.
7. 25-year life time.

