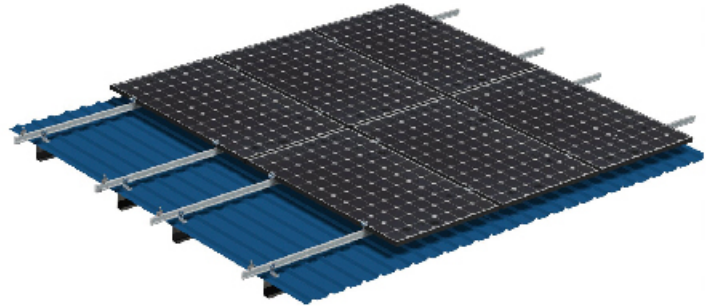


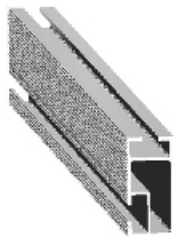
● Brief Introduction

- 1) With great flexibility for residential and industrial roof solar system installation.
- 2) Suitable to wooden rafter and steel beam.
- 2) Simply design and pre-assembled parts achieve faster installation. Help to save labor cost and time.
- 3) Customized can be made. Aluminum and stainless steel material guaranteed with long lifetime.

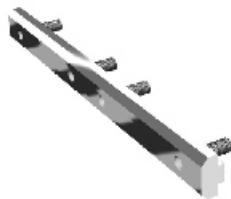


Technical Parameters:	
Application:	Various of Metal Sheet Roof
Tilt:	0° - 45°
Module Layout:	Landscape or Portrait
Wind Load:	≤46m/s
Snow Load:	0.5kn/m ² -1.4kn/m ²
Design Criteria:	ISO9001; CE; SGS; AS/NZ1170
Material:	Al 6063-T5; SUS304

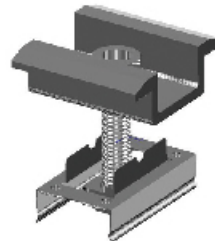
● Component Parts



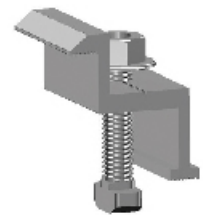
Mounting Rail



Rail Connector



Mid Clamp Kits



End Clamp Kits



Grounding Lug



L-Foot/
Tapping Screw



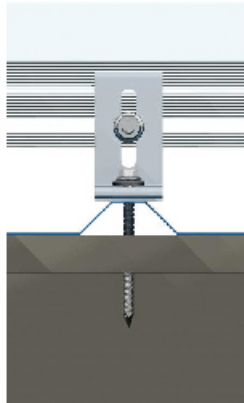
L-Foot/
Hanger Bolt



Seam Clamp

CS-RM-Metal Roof

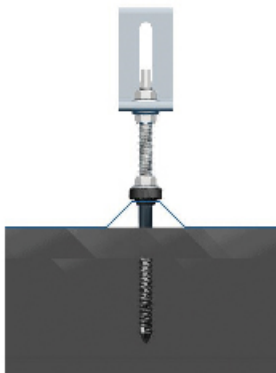
- Which metal roof is it?
It is suggested to discuss with us case by case.



L-Foot Series 1



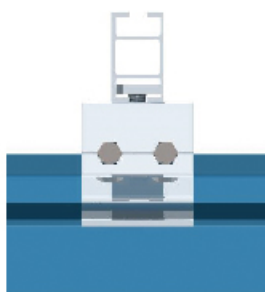
L-Foot/Tapping Screw



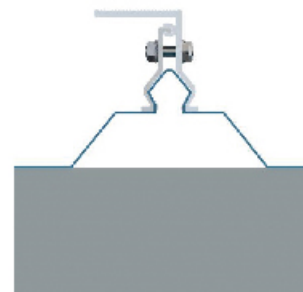
L-Foot Series 2



L-Foot/Hanger Bolt



Seam Clamp Series



Seam Clamp/Bolt