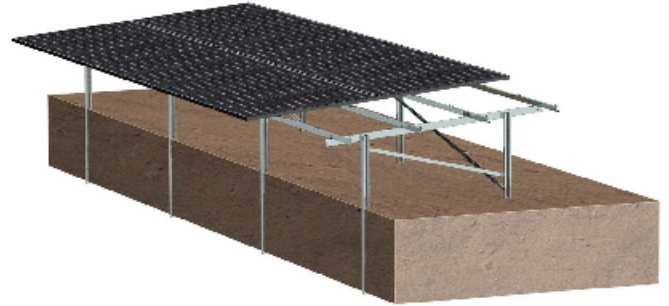


● Brief Introduction

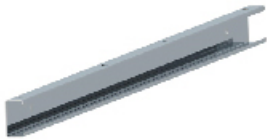
- 1) C shaped piling into ground directly with great stability.
- 2) Only 2 small connectors. Faster installation.
Help to save labor cost and time.
- 3) Height can be adjusted flexibly in case of uneven terrain.
- 4) Solar modules are fastened by bolt through back pole of module. Better to against strong wind.



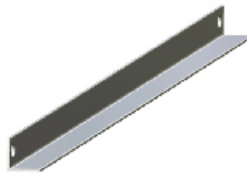
Technical Parameters:

Application:	Ground Open Area
Tilt:	0°- 35°
Module Layout:	Landscape or Portrait
Wind Load:	≤60m/s
Ground Clearance:	0.5m-2.0m
Snow Load:	0.5kn/m ² -2.0kn/m ²
Design Criteria:	ISO9001; CE; SGS; AS/NZ1170
Material:	Q235 (Hot dip galvanized); SUS304

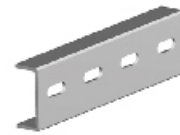
● Component Parts



Vertical Beam



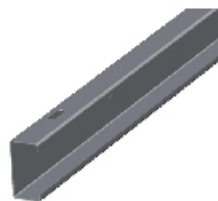
EW Backing Rod



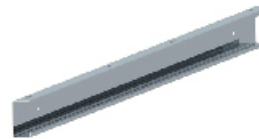
Cross Beam Connector



L connector



SN Supporting Rod



Cross Beam



C-Shaped Pile

CS-GM-C shaped Piling

N Type



W Type



● Detailed View

