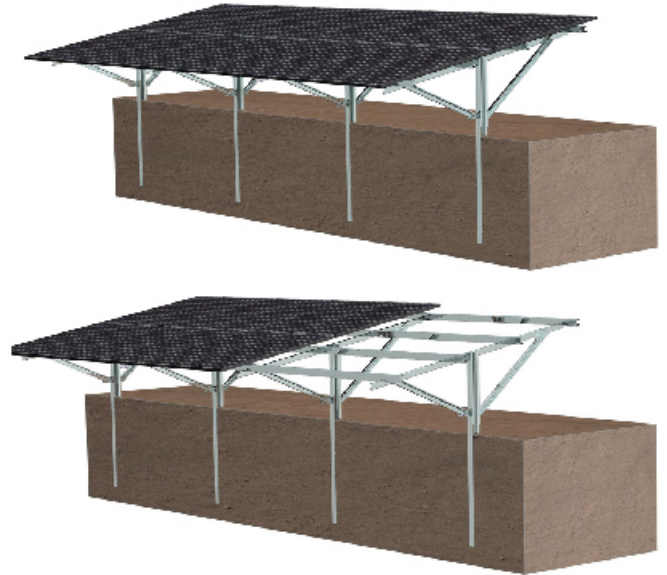


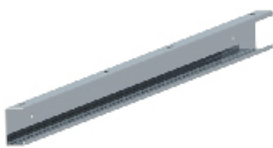
● Brief Introduction

- 1) C shaped piling into ground directly with great stability.
- 2) Only 2 small connectors. Faster installation. Help to save labor cost and time.
- 3) Height can be adjusted flexibly in case of uneven terrain.
- 4) Solar modules are fastened by bolt through back pole of module. Better to against strong wind.

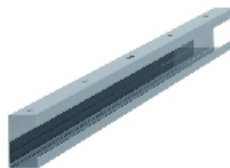


Technical Parameters:	
Application:	Ground Open Area
Tilt:	0°- 35°
Module Layout:	Landscape or Portrait
Wind Load:	≤60m/s
Ground Clearance:	0.5m-1.5m
Snow Load:	0.5kn/m ² -2.0kn/m ²
Design Criteria:	ISO9001; CE; SGS; AS/NZ1170
Material:	Q235 (Hot dip galvanized); SUS304

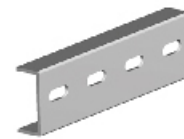
● Component Parts



Vertical Beam



Cross Beam



Cross Beam Connector



Rod Connector



Front Supporting Rod



Back Supporting Rod



Pile

CS-GM-Single Pile

● Detailed View

