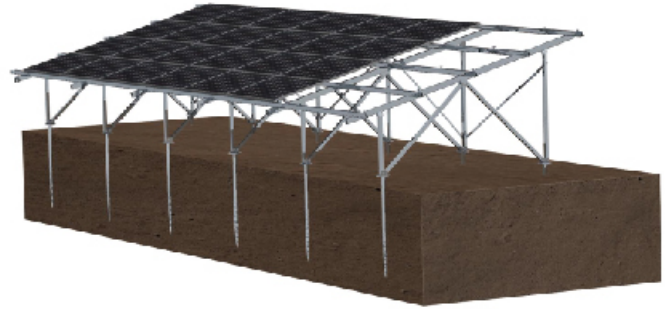


GROUND ALUMINUM MOUNTING SYSTEM

● Brief Introduction

- 1) Aluminum structure is light with good appearance and high anti-corrosion ability.
- 2) Parts are highly pre-assembled at factory, help to save installation time and labor cost.
- 3) Can be customized. Aluminum and stainless steel material guranteed with long lifetime.

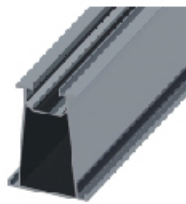


Technical Parameters:	
Application:	Ground Open Area/ Concrete Flat Roof
Tilt:	0°- 35°
Module Layout:	Landscape or Portrait
Wind Load:	≤46m/s
Ground Clearance:	0.5m-1.5m
Snow Load:	0.5kn/m ² -1.4kn/m ²
Design Criteria:	ISO9001; CE; SGS; JIS8955: 2017
Material:	Al 6005-T5; SUS304

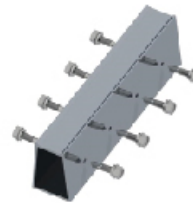
● Component Parts



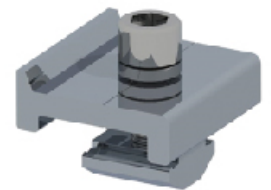
Vertical Beam Kits



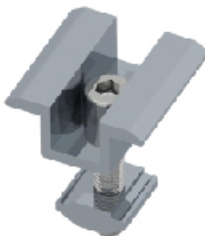
Mounting Rail



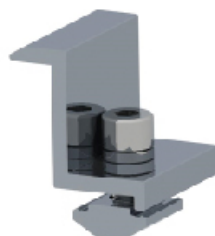
Rail Connector



Rail Clamp Kits



Mid Clamp Kits



End Clamp Kits



Bolts



Flange Screw Plie

GROUND ALUMINUM MOUNTING SYSTEM

N Type



A Type



W Type



● Detailed View

