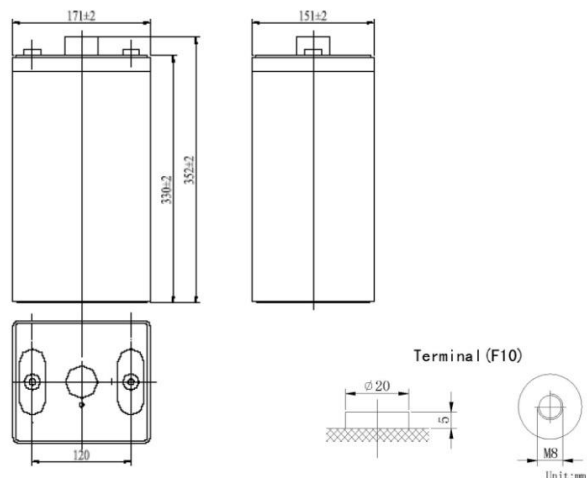


## General Feature

deep cycle battery

- Absorbent Glass Mat(AGM) technology for efficient gas recombination of up to 99% and freedom from electrolyte maintenance or water adding.
- Not restricted for air transport-complies with IATA/ICAO Special Provision A67.

- UL-recognized component.
- Can be mounted in any orientation.
- Computer designed lead, calcium tin alloy grid for high power density.
- Long service life, float or cyclic applications.
- Maintenance-free operation.
- Low self discharge.



Total height with removable cover:364

## SPECIFICATION

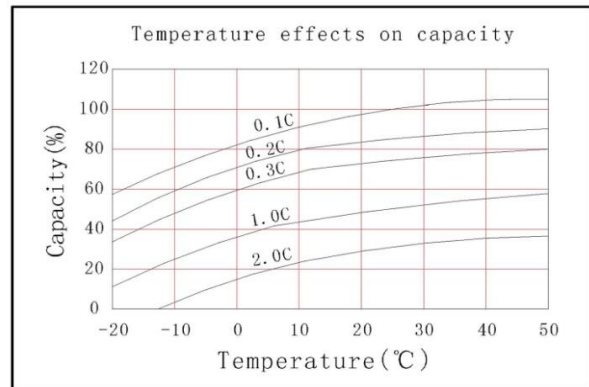
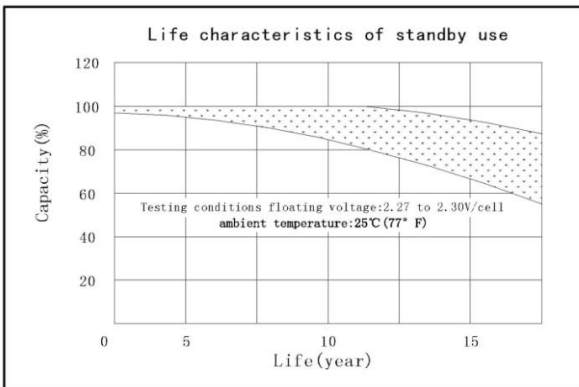
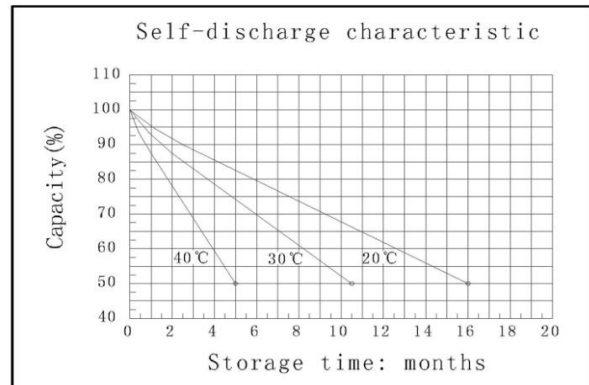
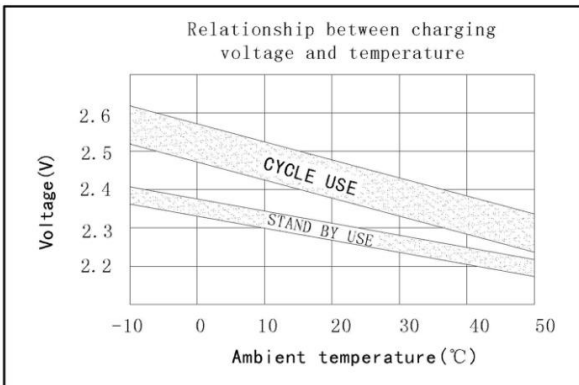
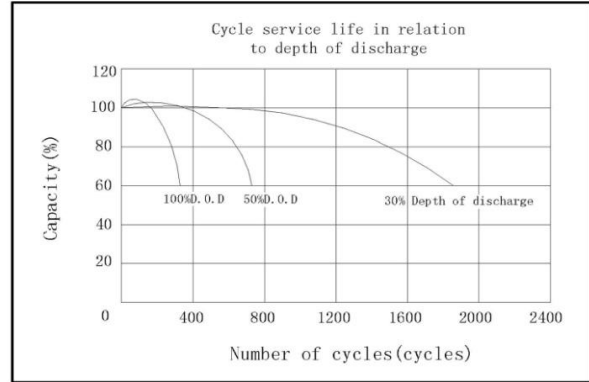
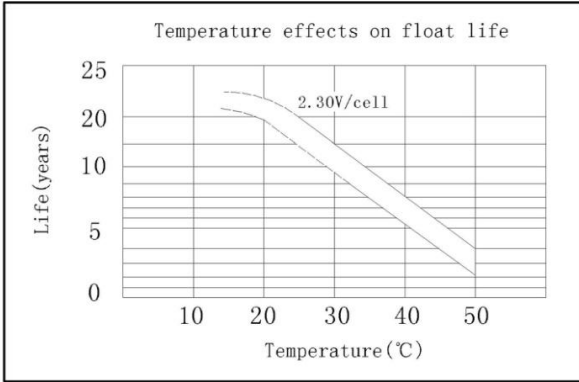
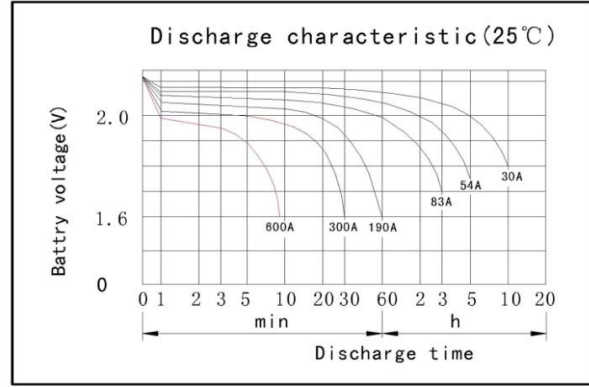
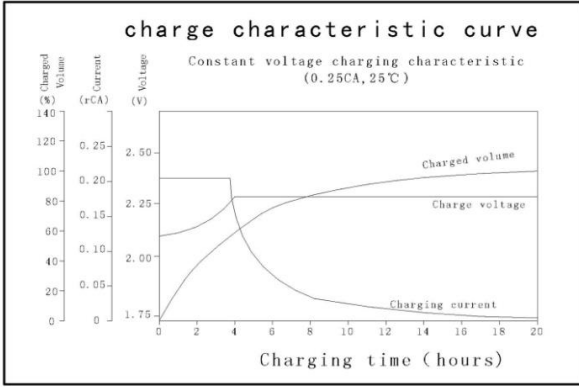
|                       |           |
|-----------------------|-----------|
| Nominal voltage       | 2V        |
| Number of cell        | 1         |
| Length(mm/inch)       | 171/6.73  |
| Width(mm/inch)        | 151/5.94  |
| Height(mm/inch)       | 330/13.0  |
| Total Height(mm/inch) | 364/14.3  |
| Approx.Weight(kg/lbs) | 18.5/40.8 |

## Battery Construction

| Component    | Positive plate | Negative plate | Container | Cover | Safety valve | Terminal | Separator  | Electrolyte   |
|--------------|----------------|----------------|-----------|-------|--------------|----------|------------|---------------|
| Raw material | Lead dioxide   | Lead           | ABS       | ABS   | Rubber       | Copper   | Fiberglass | Sulfuric acid |

## Performance Characteristics

|   |  |       |
|---|--|-------|
| Capacity<br>77°F(25°C)                                | 10 hours rate(30A 1.80V)                           | 300Ah |
|   | 5 hours rate(54A 1.75V)                            | 270Ah |
|   | 3 hours rate(83A 1.70V)                            | 249Ah |
|   | 1 hour rate(190A 1.60V)                            | 190Ah |
| Internal Resistance                                   | Full charged battery 77°F(25°C):1mΩ                |       |
| Capacity affected by<br>Temperature<br>(10 hour rate) | 104°F(40°C)  | 102%  |
|   | 77°F(25°C)   | 100%  |
|   | 32°F(10°C)   | 85%   |
|   | 5°F(-15°C)   | 65%   |
| Self-Discharge<br>68°F(20°C)                          | Capacity after 3 month storage                     | 90%   |
|   | Capacity after 6 month storage                     | 80%   |
|   | Capacity after 12 month storage                    | 60%   |
| Max discharge current77°F(25°C):1500A(5S)             |  |       |
| Charge<br>(Constant Voltage)                          | Float:2.25 to 2.30V/77°F/(25°C)                    |       |
|   | Cycle:2.35 to 2.45V/77°F/(25°C)<br>Max Current:60A |       |



### Discharge Constant Current (Amperes at 77° F 25 °C)

| End Point Volts/Cell | 5min | 10min | 15min | 30min | 45min | 1h  | 3h   | 5h   | 10h  |
|----------------------|------|-------|-------|-------|-------|-----|------|------|------|
| 1.60V                |      | 493   | 443   | 300   | 240   | 190 | 89.0 | 58.3 | 32.1 |
| 1.65V                |      | 467   | 422   | 290   | 230   | 184 | 86.5 | 57.1 | 31.8 |
| 1.70V                |      | 440   | 400   | 281   | 220   | 178 | 83.0 | 55.6 | 31.3 |
| 1.75V                |      | 413   | 378   | 272   | 210   | 171 | 80.0 | 54.0 | 30.7 |
| 1.80V                |      | 385   | 355   | 260   | 199   | 163 | 76.0 | 52.0 | 30.0 |

(Note) The above characteristics data are average values obtained Within three charge/discharge cycles not the minimum values.

### Discharge Constant Power (watts at 77° F 25 °C)

| End Point Volts/Cell | 5min | 10min | 15min | 30min | 45min | 1h  | 2h  | 3h  | 5h  |
|----------------------|------|-------|-------|-------|-------|-----|-----|-----|-----|
| 1.60V                |      | 887   | 795   | 608   | 476   | 385 | 247 | 175 | 115 |
| 1.65V                |      | 835   | 756   | 581   | 460   | 371 | 241 | 171 | 113 |
| 1.70V                |      | 783   | 718   | 554   | 443   | 357 | 234 | 166 | 111 |
| 1.75V                |      | 732   | 679   | 527   | 427   | 342 | 228 | 162 | 108 |
| 1.80V                |      | 680   | 640   | 500   | 410   | 328 | 221 | 157 | 105 |

(Note) The above characteristics data are average values obtained Within three charge/discharge cycles not the minimum values.