

UN180-6X (6V180Ah)

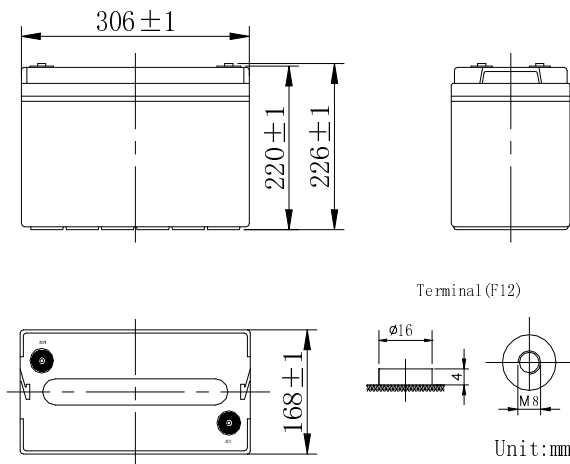
GENERAL FEATURES

- Absorbent Glass Mat (AGM) technology for efficient gas recombination of up to 99% and freedom from electrolyte for air transport-complies with LATA/ICAO Special provision A67.
- Not restricted for air transport-complies with LATA/ICAO Special Provision A67.
- UL-recognized component.
- Can be mounted in any orientation.
- Computer designed lead, calcium tin alloy grid for high power density.
- Long service life, float or cyclic applications,
- Maintenance-free operation.
- Low self discharge.
- Case and cover available in both standard and flame retardant ABS.

SPECIFICATION

| | | | | |
|-------------------------------|-----------|------------|--------------|-------------------|
| Nominal voltage | 6V | Dimensions | Total Height | 8.90inches(226mm) |
| Rated capacity (10 hour rate) | 180Ah | | Height | 8.66inches(220mm) |
| Number of cell | 3 | | Length | 12.1inches(306mm) |
| Approx. Weight (Kg / Ibs) | 26.8/59.1 | | Width | 6.61inches(168mm) |

Battery Dimensions



Characteristic

| | | |
|---|---|-------|
| Capacity 77° F(25°C) | 20 hour rate (9.3A、5.25V) | 186Ah |
| | 10 hour rate (18A、5.25V) | 180Ah |
| | 5 hour rate (31A、5.25V) | 155Ah |
| | 3 hour rate (46A、5.1V) | 138Ah |
| | 1 hour rate (110A、4.8V) | 110Ah |
| | 1C (180A、4.8V) | 32min |
| Internal Resistance | Full charged Battery 77° F(25°C) : 6m Ω | |
| Capacity affected by Temperature (20 hour rate) | 104° F(40°C) | 102% |
| | 77° F(25°C) | 100% |
| | 32° F(10°C) | 85% |
| | 5° F(-15°C) | 65% |
| Self-Discharge 68° F(20°C) | Capacity after 3 month storage | 90% |
| | Capacity after 6 month storage | 80% |
| | Capacity after 12month storage | 60% |
| Max. discharge current 77° F(25°C) : 950A(5S) | | |
| Charge (Constant Voltage) | Float: 6.80~6.90 V/77° F(25°C) | |
| | Cycle: 7.25~7.45 V/77° F(25°C) Max. Current: 45A | |

Constant power discharge ratings-watts per cell at 25°C(77° F)

| End Point Volts/Cell | 5min | 10min | 15min | 30min | 45min | 1h | 2h | 3h | 5h |
|----------------------|------|-------|-------|-------|-------|-----|-----|------|------|
| 1.60V | 860 | 685 | 563 | 366 | 250 | 228 | 128 | 88.2 | 60.5 |
| 1.65V | 825 | 652 | 543 | 354 | 245 | 224 | 124 | 87.2 | 60.2 |
| 1.70V | 772 | 617 | 524 | 344 | 239 | 220 | 122 | 86.1 | 59.7 |
| 1.75V | 718 | 584 | 502 | 333 | 233 | 215 | 120 | 85.1 | 59.4 |
| 1.80V | 661 | 548 | 479 | 322 | 229 | 208 | 119 | 83.7 | 58.7 |

