



UN65-12 (12V65Ah/10hr)

The rechargeable batteries are lead-lead dioxide systems. The dilute sulfuric acid electrolyte is absorbed by separators and thus immobilized.



Should the battery be accidentally overcharged producing hydrogen and oxygen, Special one-way valves allow the gases to escape thus avoiding excessive pressure build-up. Otherwise, the battery is completely sealed and is, therefore, maintenance-free, leak proof and usable in any position.

Battery Construction

| | | | | | | | | |
|--------------|----------------|----------------|-----------|-------|--------------|----------|------------|---------------|
| Component | Positive plate | Negative plate | Container | Cover | Safety valve | Terminal | Separator | Electrolyte |
| Raw material | Lead dioxide | Lead | ABS | ABS | Rubber | Copper | Fiberglass | Sulfuric acid |

General Feature

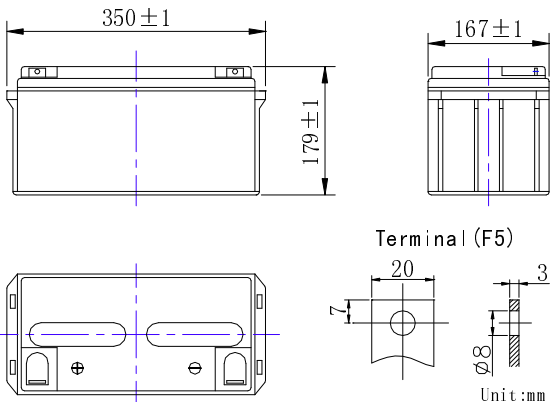
- Absorbent Glass Mat(AGM) technology for efficient gas recombination of up to 99% and freedom from electrolyte maintenance or water adding.
- Not restricted for air transport-complies with IATA/ICAO Special Provision A67.
- UL-recognized component.
- Can be mounted in any orientation.
- Computer designed lead, calcium tin alloy grid for high power density.
- Long service life, float or cyclic applications.
- Maintenance-free operation.
- Low self discharge.

Performance Characteristics

| | | |
|---|---|--------|
| Capacity 77°F(25°C) | 20 hour rate (3.35A、10.8V) | 67Ah |
| | 10 hour rate (6.5A、10.8V) | 65Ah |
| | 5 hour rate (11.1A、10.5V) | 55.5Ah |
| | 1 hour rate (39.5A、9.6V) | 39.5Ah |
| Internal Resistance | Full charged Battery77°F(25°C): 8mΩ | |
| Capacity affected by Temperature (10 hour rate) | 104° F(40°C) | 102% |
| | 77° F(25°C) | 100% |
| | 32° F(10°C) | 85% |
| | 5° F(-15°C) | 65% |
| Self-Discharge 68°F(20°C) | Capacity after 3 month storage | 90% |
| | Capacity after 6 month storage | 80% |
| | Capacity after 12month storage | 60% |
| Max. discharge current77°F(25°C): 650A(5S) | | |
| Charge (Constant Voltage) | Float: 13.6~13.8 V/77° F(25°C) | |
| | Cycle:14.4~14.7 V/77°F(25°C) Max. Current: 16.3A | |

SPECIFICATION

- Nominal voltage 12V
- Number of cell 6
- Length(mm/inch) 350/13.78
- Width(mm/inch) 167/6.57
- Height(mm/inch) 179/7.05
- Total Height(mm/inch) 179/7.05
- Approx. Weight(kg/lbs) 19.6/43.2



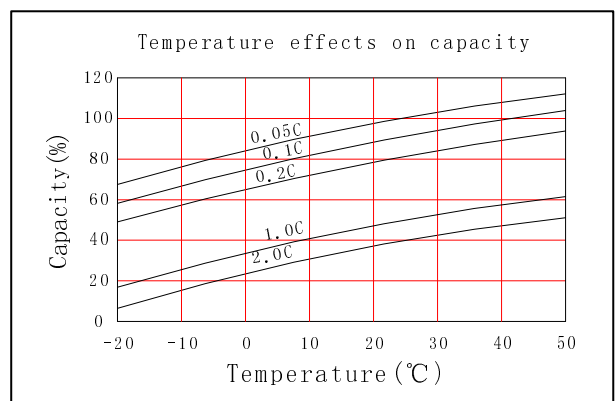
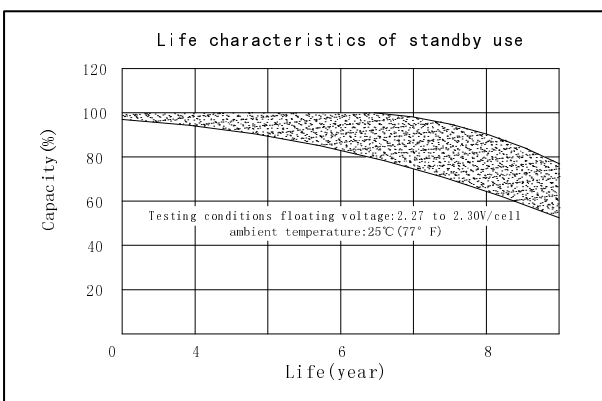
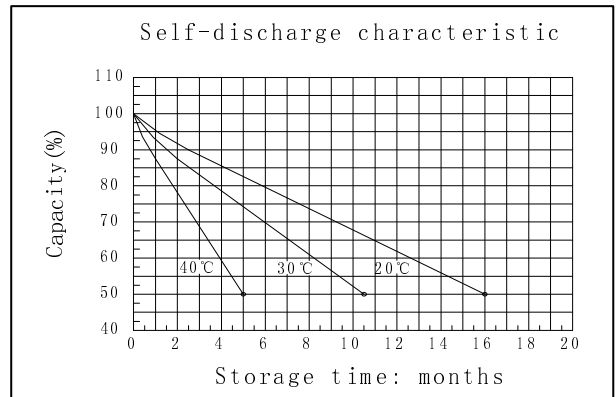
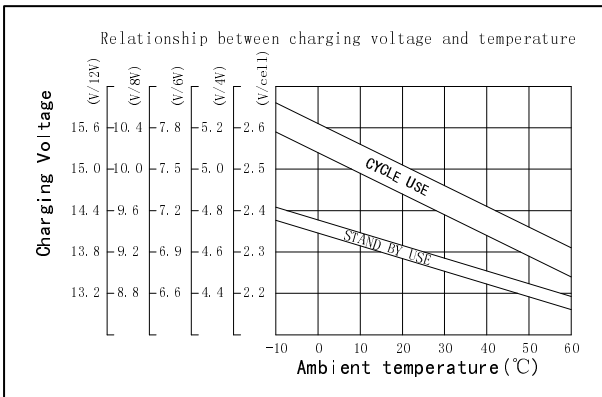
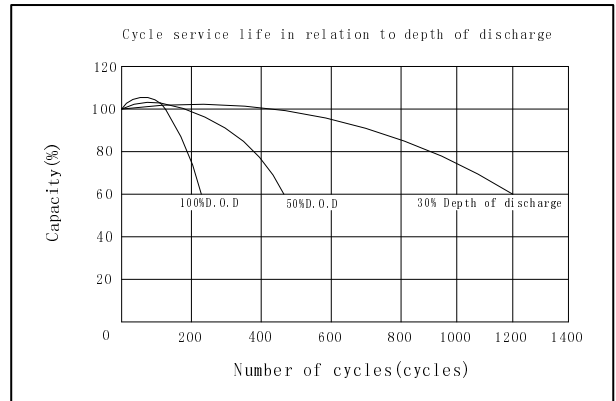
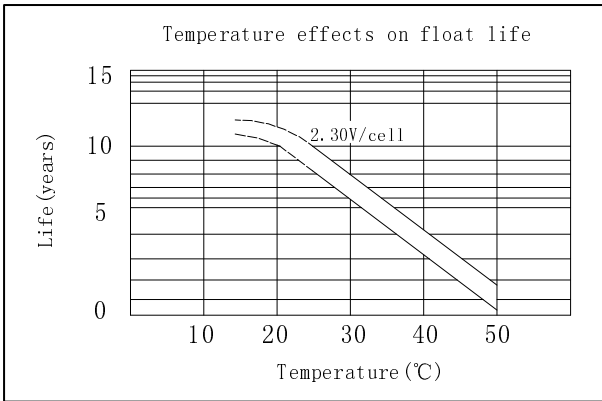
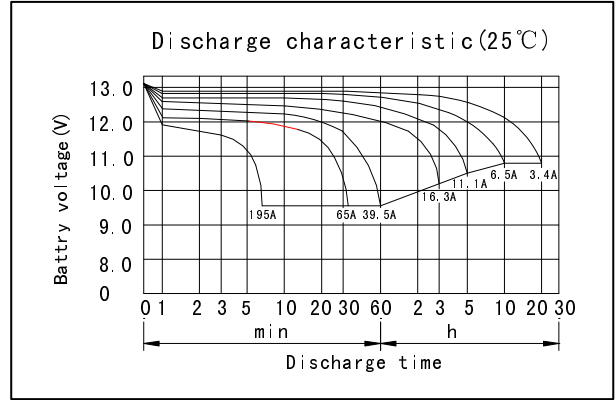
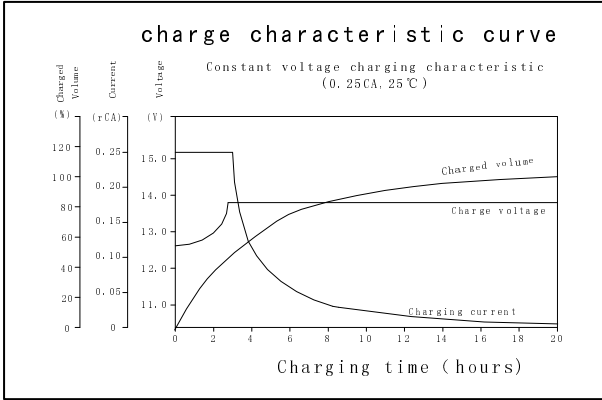
Discharge Constant Current (Amperes at 77° F25 °C)

| End Point Volts/Cell | 5min | 10min | 15min | 30min | 1h | 3h | 5h | 10h | 20h |
|----------------------|------|-------|-------|-------|------|------|------|------|------|
| 1.60V | 210 | 153 | 120 | 67.5 | 39.5 | 16.8 | 11.7 | 6.70 | 3.50 |
| 1.65V | 200 | 147 | 115 | 65.5 | 38.3 | 16.6 | 11.5 | 6.70 | 3.50 |
| 1.70V | 188 | 140 | 109 | 62.8 | 36.8 | 16.3 | 11.3 | 6.60 | 3.45 |
| 1.75V | 174 | 131 | 103 | 59.8 | 35.0 | 16.0 | 11.1 | 6.60 | 3.40 |
| 1.80V | 161 | 119 | 95.7 | 56.1 | 32.9 | 15.6 | 10.9 | 6.50 | 3.35 |

Discharge Constant Power (watts at 77° F 25 °C)

| End Point Volts/Cell | 5min | 10min | 15min | 30min | 45min | 1h | 2h | 3h | 5h |
|----------------------|------|-------|-------|-------|-------|------|------|------|------|
| 1.60V | 361 | 268 | 210 | 125 | 96.7 | 76.7 | 49.8 | 34.4 | 23.0 |
| 1.65V | 340 | 253 | 201 | 119 | 92.2 | 73.4 | 48.3 | 33.6 | 22.6 |
| 1.70V | 317 | 237 | 191 | 112 | 87.6 | 70.1 | 46.7 | 32.6 | 22.1 |
| 1.75V | 292 | 220 | 181 | 105 | 82.9 | 66.6 | 44.8 | 31.7 | 21.7 |
| 1.80V | 265 | 201 | 170 | 97.6 | 78.1 | 63.0 | 42.9 | 30.6 | 21.1 |

(Note)The above characteristics data are average values obtained Within three charge/discharge cycles not the minimum values.



DONGGUAN OREMA POWER CO., LTD

Add: #1 Qilinling Road Shahu, Tangxia Town, Dongguan Guangdong China

TEL: +86-769- 3896 1163 +86-769- 3896 1168

FAX: +86-769- 3896 1169



www.oremabattery.com