



# UNF180-12G (12V180h/100hr)



UNF-G Series is GEL battery which is manufactured with microporous Polymer Separator and colloidal Silicon. Gel battery are featured with low self-discharge, strong ability to recover from deep discharging, excellent cycle life and performance at cold ambient temperatures than conventional VRLA

## Battery Construction

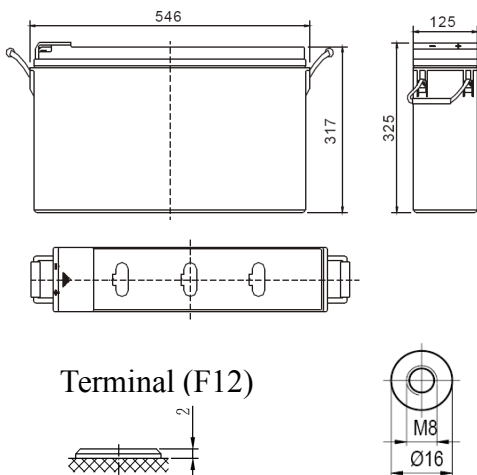
Component	Positive plate	Negative plate	Container	Cover	Safety valve	Terminal	Separator	Electrolyte
Raw material	Lead dioxide	Lead	ABS	ABS	Rubber	Copper	Microporous duroplastic	Colloidal silicon

## General Feature

- Micro millimeter SiO<sub>2</sub> and H<sub>2</sub>SO<sub>4</sub> technology for Efficient gas recombination of up to 99% and Freedom from electrolyte maintenance or water adding.
- 12 years design life for standby use.
- Not restricted for air transport-complies with IATA/ICAO Special Provision A67.
- UL-recognized component.
- Can be mounted in any orientation.
- Computer designed lead, calcium tin alloy grid for high power density.
- Long service life, float or cyclic applications.
- Maintenance-free operation.
- Low self discharge.

## SPECIFICATION

Nominal voltage ..... 12V  
 Number of cell ..... 6  
 Length(mm/inch) ..... 546/21.5  
 Width(mm/inch) ..... 125/4.92  
 Height(mm/inch) ..... 317/12.5  
 Total Height(mm/inch) ..... 325/12.8  
 Approx. Weight(kg/lbs) ..... 54/118.9



## Performance Characteristics

Capacity 77°F(25°C)	100 hour rate (1.8A、11.1V)	180Ah
	10 hour rate (15.5A、10.8V)	155Ah
	5 hour rate (26.0A、10.5V)	130Ah
	1 hour rate (90A、9.6V)	90Ah
Internal Resistance	Full charged Battery77°F(25°C):4.8mΩ	
Operating Temperature Range	Discharge: -20~60°C	
	Charge: -10~60°C	
	Storage: -20~60°C	
Self-Discharge 3% of capacity declined per month at 20°C(average)		
Max. discharge current77°F(25°C): 1000A(5S)		
Charge (Constant Voltage)	Float: 13.38~13.50 V/77° F/(25°C)	
	Cycle:14.28~14.52 V/77°F/(25°C)	
	Max. Current: 39A	

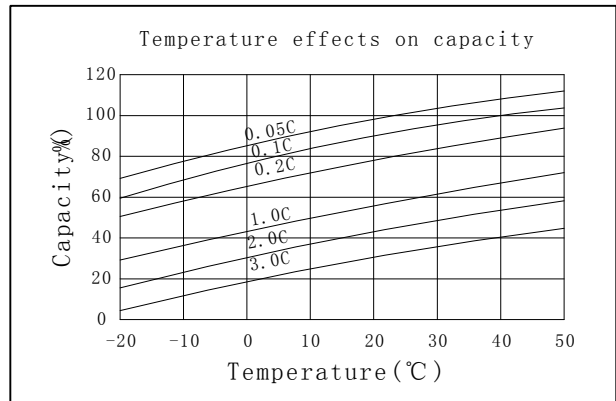
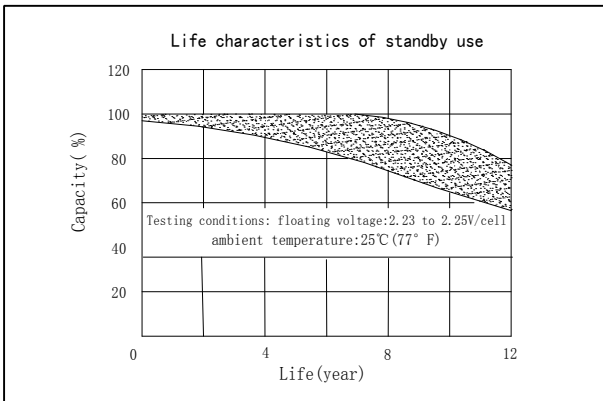
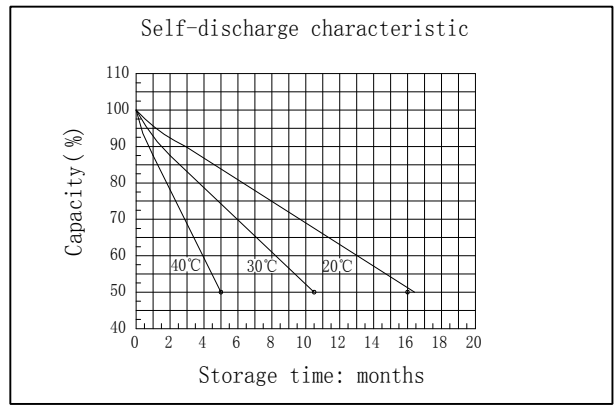
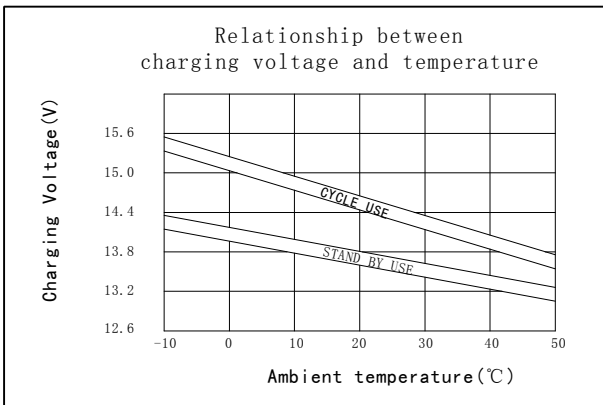
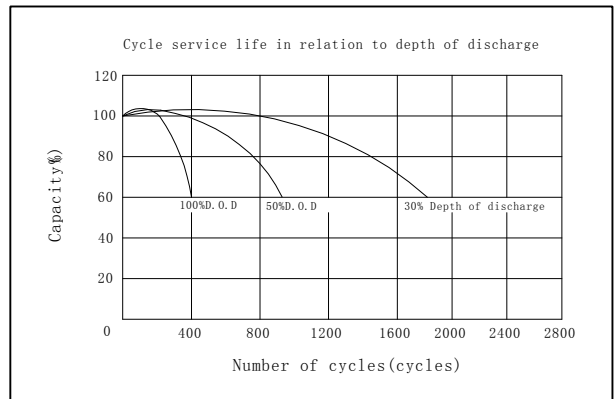
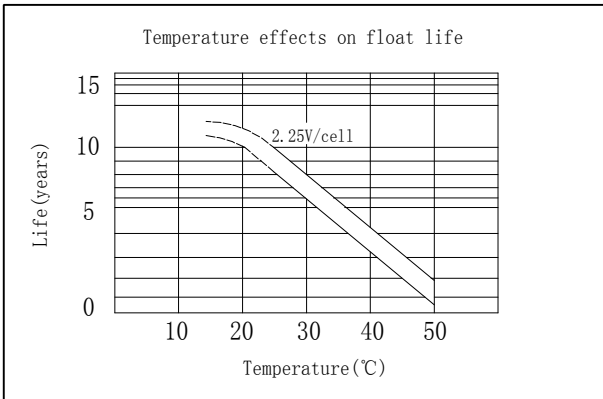
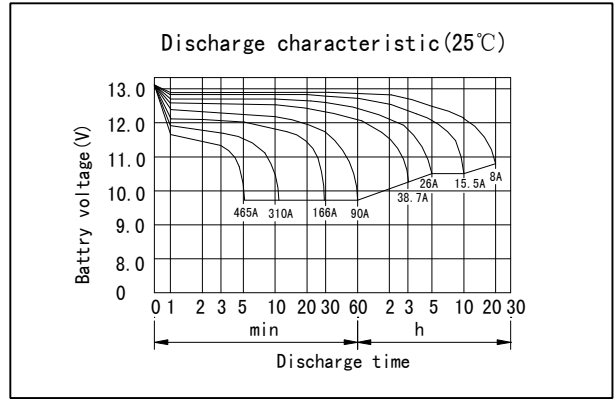
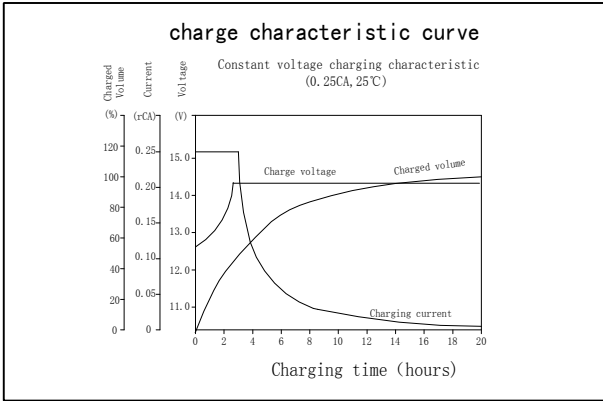
Discharge Constant Current (Amperes at 77° F25°C)

End Point Volts/Cell	10min	15min	30min	1h	3h	5h	10h	20h	100h
1.60V	328	257	166	90.0	40.2	26.9	15.85	8.25	1.85
1.65V	309	240	161	88.0	39.5	26.6	15.8	8.20	1.84
1.70V	290	220	155	86.0	38.7	26.3	15.7	8.15	1.83
1.75V	270	201	148	84.0	37.9	26.0	15.6	8.10	1.82
1.80V	250	183	141	81.5	36.2	25.5	15.5	8.00	1.80

Discharge Constant Power (watts at 77° F25°C)

End Point Volts/Cell	10min	15min	30min	45min	1h	2h	3h	5h	
1.60V		520	424	285	226	170	105	76.6	50.8
1.65V		501	412	279	223	166	104	76.1	50.6
1.70V		482	400	272	220	162	103	75.6	50.3
1.75V		462	387	265	216	157	101	75.2	50.0
1.80V		438	372	257	210	150	99.0	74.6	49.7

(Note)The above characteristics data are average values obtained Within three charge/discharge cycles not the minimum values.



**DONGGUAN OREMA POWER CO., LTD**

Add: #1 Qilinling Road Shahu, Tangxia Town, Dongguan Guangdong China

TEL: +86-769- 3896 1163 +86-769- 3896 1168

FAX: +86-769- 3896 1169



[www.oremabattery.com](http://www.oremabattery.com)