

### Specification

Nominal Voltage	12V	
Nominal Capacity(20HR)	17.0AH	
Dimension	Length	181.5±2mm (7.15 inches)
	Width	77±1mm (3.03 inches)
	Container Height	167.5±2mm (6.59 inches)
	Total Height (with Terminal)	167.5±2mm (6.59 inches)
Approx Weight	Approx 5.8 kg (12.8lbs)	
Terminal	T12	
Container Material	ABS	
Rated Capacity	17.0 AH/0.85A	(20hr, 1.80V/cell, 25°C/77°F)
	15.8 AH/1.58A	(10hr, 1.75V/cell, 25°C/77°F)
	13.6 AH/2.72A	(5hr, 1.75V/cell, 25°C/77°F)
	11.8 AH/3.94A	(3hr, 1.75V/cell, 25°C/77°F)
	9.35 AH/9.35A	(1hr, 1.67V/cell, 25°C/77°F)
Max. Discharge Current	204A (5s)	
Internal Resistance	Approx 18mΩ	
Operating Temp. Range	Discharge	-20~55°C (-4~131°F)
	Charge	0~40°C (32~104°F)
	Storage	-20~50°C (-4~122°F)
Nominal Operating Temp. Range	25±3°C (77±5°F)	
Cycle Use	Initial Charging Current less than 4.25A. Voltage	
	14.4V~15.0V at 25°C(77°F)Temp. Coefficient -30mV/°C	
Standby Use	No limit on Initial Charging Current Voltage	
	13.5V~13.8V at 25°C(77°F)Temp. Coefficient -20mV/°C	
Capacity affected by Temperature	40°C (104°F)	103%
	25°C (77°F)	100%
	0°C (32°F)	86%
Self Discharge	Leoch LPG series batteries may be stored for up to 9 months at 25°C(77°F) and then a freshening charge is required. For higher temperatures the time interval will be shorter.	



### Applications

- ◆ Telecommunications
- ◆ Solar system
- ◆ Wind power system
- ◆ Wheelchair
- ◆ Floor cleaning machines
- ◆ Golf trolley
- ◆ Boats



### Constant Current Discharge (Amperes) at 25 °C (77°F)

F.V/Time	20min	30min	45min	1h	2h	3h	4h	5h	6h	7h	8h	9h	10h	20h
1.85V/cell	14.4	11.3	8.61	7.21	4.57	3.49	2.89	2.49	2.15	1.90	1.72	1.57	1.48	0.82
1.80V/cell	16.5	12.6	9.50	7.96	4.95	3.73	3.06	2.62	2.26	1.99	1.80	1.65	1.55	0.85
1.75V/cell	18.5	13.9	10.3	8.52	5.24	3.94	3.20	2.72	2.34	2.06	1.86	1.70	1.58	0.87
1.70V/cell	19.9	14.9	10.9	9.01	5.56	4.11	3.31	2.81	2.42	2.13	1.91	1.75	1.62	0.88
1.67V/cell	20.8	15.4	11.3	9.35	5.70	4.24	3.39	2.86	2.46	2.16	1.94	1.77	1.64	0.89
1.60V/cell	22.5	16.5	12.1	9.93	5.93	4.41	3.52	2.95	2.52	2.21	1.98	1.81	1.67	0.90

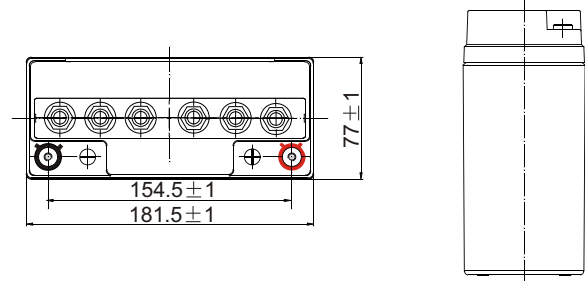
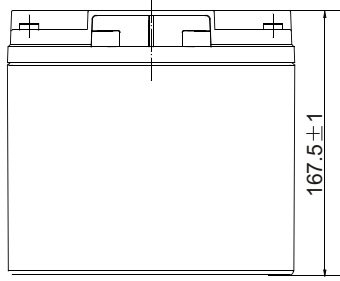
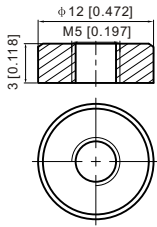
### Constant Power Discharge (Watts/cell) at 25 °C (77°F)

F.V/Time	20min	30min	45min	1h	2h	3h	4h	5h	6h	7h	8h	9h	10h	20h
1.85V/cell	27.5	21.8	16.7	14.0	8.94	6.83	5.68	4.92	4.26	3.78	3.42	3.13	2.96	1.63
1.80V/cell	31.1	24.1	18.3	15.4	9.63	7.29	5.99	5.15	4.46	3.95	3.57	3.28	3.09	1.69
1.75V/cell	34.6	26.2	19.6	16.4	10.2	7.68	6.26	5.33	4.60	4.07	3.68	3.37	3.14	1.73
1.70V/cell	36.9	27.9	20.7	17.3	10.7	7.98	6.45	5.48	4.75	4.20	3.78	3.46	3.21	1.75
1.67V/cell	37.9	28.6	21.3	17.8	11.0	8.20	6.59	5.58	4.82	4.25	3.83	3.50	3.25	1.76
1.60V/cell	40.6	30.4	22.7	18.8	11.3	8.49	6.81	5.74	4.92	4.33	3.89	3.57	3.31	1.78

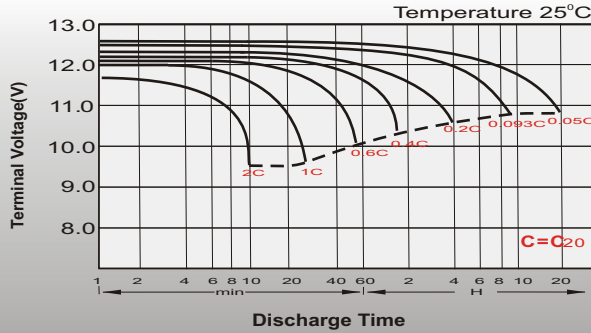
## Dimensions

### T12 Terminal

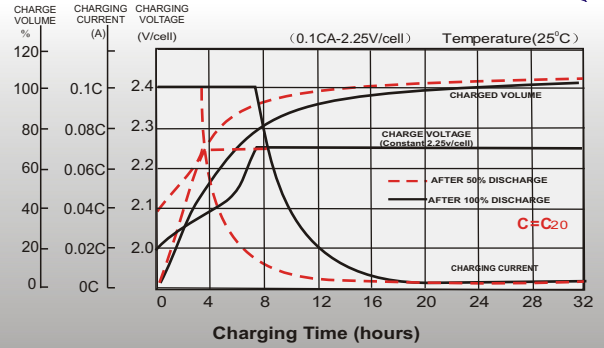
Unit: mm [inches]



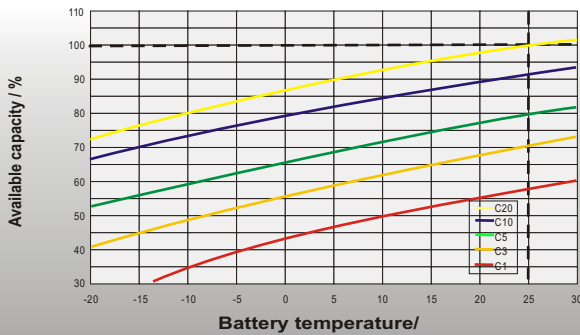
## Discharge Characteristics



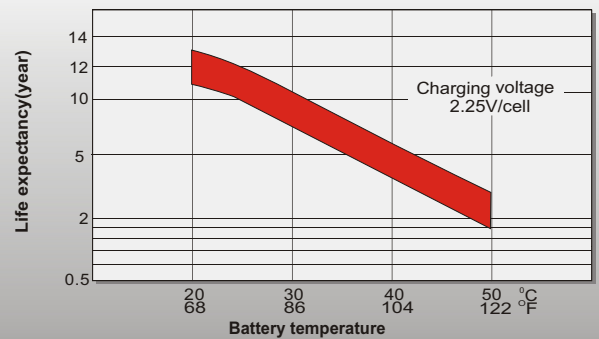
## Float Charging Characteristics



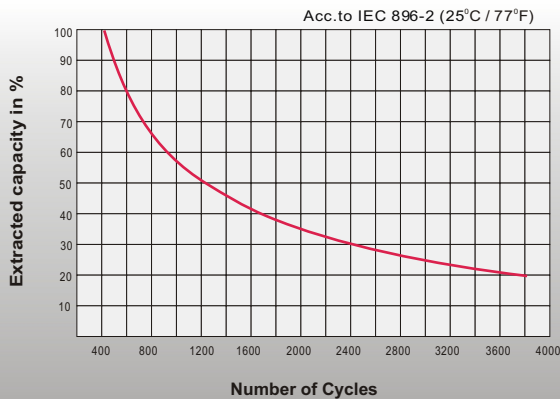
## Temperature Effects in Relation to Battery Capacity



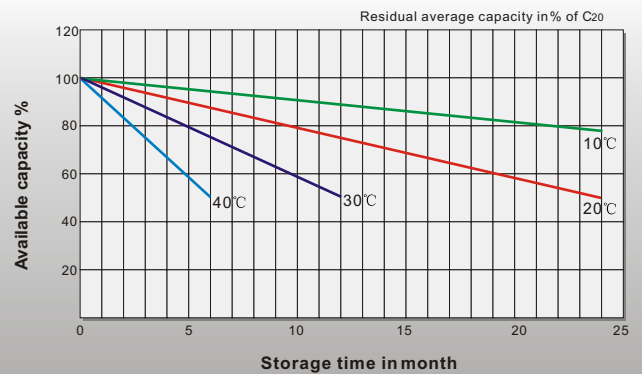
## Effect of Temperature on Long Term Float Life



## Cycle Life in Relation to Depth of Discharge



## General Relation of Capacity VS. Storage Time



## Sales Office

### China sales office:

Add: 5th Floor, Xinbaohui Bldg., Nanhai Blvd.,  
Nanshan, Shenzhen, China. 518052  
Tel: +86-755-86036060 (100 lines)  
Fax: +86-755-26067269  
E-mail: export@leoch.com  
Http://www.leoch.com

### HongKong sales office:

Add: Workshop C, 33/F, TML Tower,  
No. 3 Hoi Shing Road, Tsuen Wan,  
New Territories, Hong Kong  
Tel: +852 35786666  
Fax: +852 21170016  
E-mail: sales.hk@leoch.com

### Singapore sales office:

Add: No. 1 Tech Park Crescent,  
Singapore 638131  
Tel: +65 68416629  
Fax: +65 68443210  
Email: sales.sg@leoch.com

### North America sales office:

Add: 19751 Descartes, Unit A,  
Foothill Ranch, CA 92610, USA  
Tel: 949-588-5853  
Fax: 949-588-5966  
E-mail: sales@leoch.us  
Http://www.leoch.com

### Europe sales office:

Add: 9B Wheatstone Court, Waterwells  
Business Park, Gloucester, GL2-2AQ,  
UK United Kingdom  
Tel: +44(0)1452 729428 / 1452 729696  
Fax: +44 (0)1452-690125  
E-mail: Sales.Europe@leoch.com