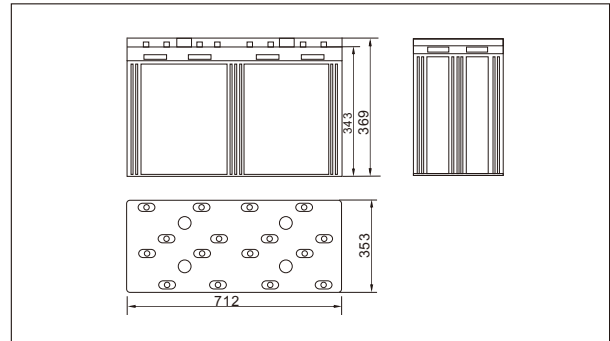




SW225000E(2V2500AH)



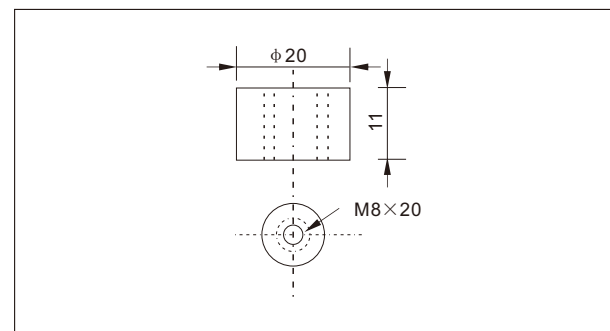
● Outer dimensions & Terminal (mm)



● Specifications

Nominal Voltage		2 V
Rated capacity (10 hour rate)		2500 Ah
Dimensions	Total Height	369 mm (14.5 inches)
	Height	343mm (13.5 inches)
	Length	712 mm (28.0 inches)
	Width	353 mm (13.9 inches)
Weight Approx		165 Kg (363.4 lbs)

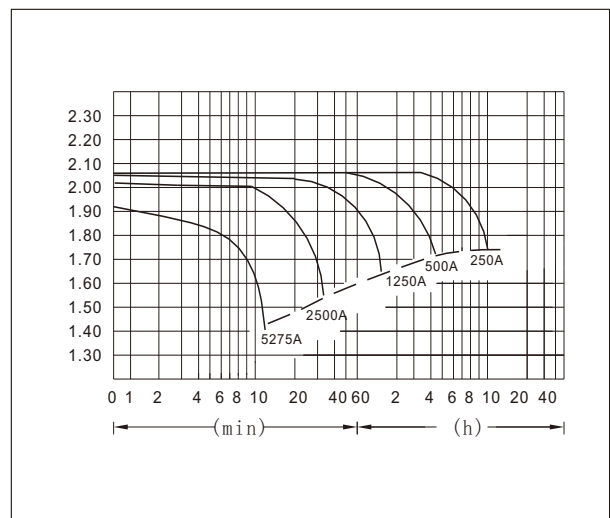
● Terminal Type (mm)



● Characteristics

Capacity 25°C(77°F)	10 hour rate(250 A)	2500 AH
	5 hour rate(400 A)	2000 AH
	1 hour rate(1500 A)	1500 AH
	1.5 hour discharge to 1.75 V	1000A
Internal Resistance	Full charged Battery at 25°C(77°F)	0.2 mΩ
Capacity affected by Temperature (10hour rate)	40°C(104°F)	102%
	25°C(77°F)	100%
	0°C(32°F)	85%
	-15°C(5°F)	65%
Self-Discharge at 25°C(77°F)	Capacity after 3 month storage	91%
	Capacity after 6 month storage	82%
	Capacity after 12 month storage	64%
Terminal	T20	
Charge (constant Voltage)	Cycle	Initial Charging Current less than 625 A Voltage 2.35-2.40V
	Float	Voltage 2.25-2.30V

● Discharge Curves 25°C(77°F)



Constant Current(Amp) and Constant Power(Watt) Discharge Table at 25°C (77°F)

Time		10min	30min	1h	2h	3h	4h	5h	8h	10h	20h
1.60V	A	4975.0	2850.0	1500.0	875.0	645.0	500.0	413.5	289.6	275.0	142.5
	W	9775	5100	2900	1700	1250	975.0	800.0	550.0	512.5	272.3
1.70V	A	4725.0	2775.0	1410.0	835.0	625.0	487.5	405.2	284.4	258.8	140.0
	W	9400	5050	2725	1600	1200	950.0	775.0	550.0	487.5	267.5
1.75V	A	4475.0	2550.0	1375.0	815.0	610.0	480.0	400.0	281.3	255.0	138.3
	W	9100	4750	2625	1575	1175	925.0	765.0	542.5	482.5	262.5
1.80V	A	4225.0	2350.0	1325.0	795.0	595.0	472.5	390.0	274.0	250.0	136.5
	W	8750	4575	2525	1550	1150	905.0	750.0	525.0	480.0	260.0
1.85V	A	3975.0	2100.0	1250.0	775.0	575.0	458.3	380.0	266.7	243.8	135.0
	W	8250	4200	2450	1525	1150	887.5	745.0	502.5	475.0	256.3