

Motive Battery

Energy Storage Battery

Reserve Battery

Motorcycle Battery



Energy Storage Battery-AGM-GEL Technology-TNG Series

TNG12-135

(12V 135Ah)

GENERAL FEATURES

- ◆ Oxygen recombination technology: maintenance-free, no need to add water or acid
- ◆ The patent grid alloy: less gassing, low self-discharge, excellent corrosion resistance
- ◆ Special paste formula: additives for deep discharge, long cycle life
- ◆ High quality AGM separator: extend cycle life and prevent micro short circuit
- ◆ The patent Nano silica electrolytes, extend cycle life and improve the deep discharge performance
- ◆ ABS container: increase the strength of battery (Flame-retardant ABS UL94-V0 is optional)

Dimension

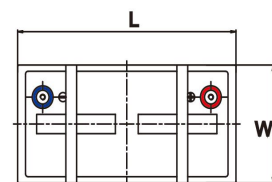
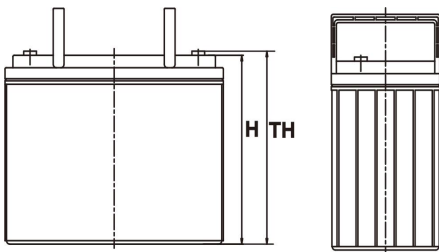
Unit:mm

Length 342±2mm / 13.46inch

Width 172±2mm / 6.77inch

Container Height 283±3mm / 11.14inch

Total Height 288±3mm / 11.34inch



Application

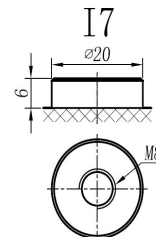
- ◆ Renewable energy system
- ◆ Hybrid solar power system
- ◆ Uninterrupted Power Supply (UPS)
- ◆ Communications and electric equipment
- ◆ Emergency lighting equipment
- ◆ Fire alarm and security systems
- ◆ Robots, control equipment, and other factory automation equipment
- ◆ Emergency power supply (EPS)
- ◆ Various power toy and hobby equipment
- ◆ Lighting equipment



Terminal

Unit:mm

Terminal Type: I7



Weight

40kg 88.18lbs



ISO9001 ISO14001 OHSAS18001

This document is subject to change without prior notification

Motive Battery Energy Storage Battery Reserve Battery Motorcycle Battery

TNG12-135

Specification

Nominal Voltage	12V	
	143Ah	20hr Rate(1.80V/cell)
	135Ah	10hr Rate(1.80V/cell)
Rated Capacity(25°C)	116Ah	5hr Rate(1.75V/cell)
	108Ah	3hr Rate(1.70V/cell)
	82Ah	1hr Rate(1.60V/cell)
Container Material	ABS (Flame-retardant ABS UL94-V0 is optional)	
Operating Temperature Range	Discharge	-20 ~ +50°C
	Charge	0 ~ +40°C
	Storage	-15 ~ +40°C
Capacity Effected by Temperature	40°C / 104°F	106%
	25°C / 77°F	100%
	0°C / 32°F	86%
	-10°C / 14°F	65%
Charge Voltage	Float Voltage	2.25 -2.30V/cell@25°C, Tem. Coefficient: -3mV/cell/°C
	Equalize Voltage	2.35 -2.40V/cell@25°C, Tem. Coefficient: -3mV/cell/°C
	Cycle Voltage	2.40 -2.50V/cell@25°C, Tem. Coefficient: -5mV/cell/°C
Max Charging Current	40.5A (0.3C)	
Max. Discharge Current (5S)	1350A	
Internal Resistance	4mΩ	
Self Discharge	<3%, TN series stored at 25 °C require a supplementary charge every six months, the charging interval would shrink when the ambient temperature went higher	

Discharge Performance

Constant Current Discharge Table (25°C/77°F) Unit: A

F.V/Time	5min	10min	15min	20min	30min	45min	1h	2h	3h	4h	5h	6h	8h	10h	20h
1.85V/cell	226.7	178.2	151.6	126.7	100.7	77.3	63.59	40.49	31.99	26.19	21.10	18.40	14.90	12.71	7.096
1.80V/cell	304.2	227.7	183.1	149.8	118.9	89.9	71.28	44.19	34.49	27.99	22.69	19.70	15.80	13.51	7.168
1.75V/cell	343.0	250.1	200.0	161.2	123.4	93.3	74.58	45.89	35.09	28.59	23.19	20.30	16.10	13.61	7.239
1.70V/cell	377.8	272.7	213.6	169.4	128.4	97.1	76.88	47.69	36.09	29.29	23.79	20.70	16.30	13.81	7.372
1.65V/cell	416.5	294.3	227.0	180.0	135.5	99.5	79.48	48.99	37.59	30.29	24.49	21.10	16.60	14.11	7.474
1.60V/cell	459.4	319.5	242.8	191.7	143.0	103.6	82.38	50.69	38.79	31.29	25.29	21.60	16.70	14.21	7.515

Constant Power Discharge Table (25°C/77°F) Unit: W

F.V/Time	5min	10min	15min	20min	30min	45min	1h	2h	3h	4h	5h	6h	8h	10h	20h
1.85V/cell	226.7	178.2	151.6	126.7	100.7	77.3	63.59	40.49	31.99	26.19	21.10	18.40	14.90	12.71	6.950
1.80V/cell	304.2	227.7	183.1	149.8	118.9	89.9	71.28	44.19	34.49	27.99	22.69	19.70	15.80	13.51	7.020
1.75V/cell	343.0	250.1	200.0	161.2	123.4	93.3	74.58	45.89	35.09	28.59	23.19	20.30	16.10	13.61	7.090
1.70V/cell	377.8	272.7	213.6	169.4	128.4	97.1	76.88	47.69	36.09	29.29	23.79	20.70	16.30	13.81	7.220
1.65V/cell	416.5	294.3	227.0	180.0	135.5	99.5	79.48	48.99	37.59	30.29	24.49	21.10	16.60	14.11	7.320
1.60V/cell	459.4	319.5	242.8	191.7	143.0	103.6	82.38	50.69	38.79	31.29	25.29	21.60	16.70	14.21	7.360

动力电池

储能电池

备用电池

摩托车电池



储能电池-AGM-凝胶技术-TNG系列

TNG12-135

(12V 135Ah)

产品特点

- ◆ 阀控式免维护设计，寿命期间无需加水或加酸
- ◆ 专利稀土合金板栅，减少气体产生，自放电率低，抗腐蚀能力出众
- ◆ 特制组成配方，添加特殊试剂，增进深放电性能，延长循环寿命
- ◆ 高质量AGM隔板：防止微短路，延长循环寿命
- ◆ 纳米硅胶专利电解质，延长循环寿命，增进深放电性能
- ◆ ABS壳盖：电池外壳强度高（阻燃壳体UL94-V0可选）



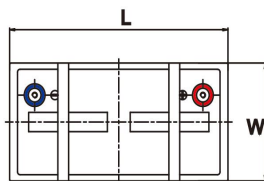
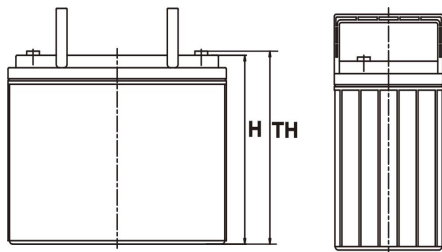
产品应用

- ◆ 可再生能源系统
- ◆ 太阳能混合动力系统
- ◆ 不间断电源 (UPS)
- ◆ 通信及电力设备
- ◆ 应急照明系统
- ◆ 安防及火灾报警系统
- ◆ 机械自动化控制设备
- ◆ 应急电源 (EPS)
- ◆ 各式电动玩具及娱乐设施
- ◆ 照明设备

尺寸

单个尺寸

长	342±2mm / 13.46inch
宽	172±2mm / 6.77inch
高	283±3mm / 11.14inch
总高	288±3mm / 11.34inch



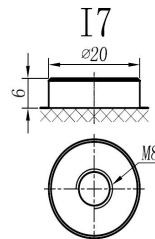
端子类型

单位:mm

端子类型 I7

重量

40kg 88.18lbs



ISO9001 ISO14001 OHSAS18001

内容如有改动，恕不另行通知

□ 动力电池

■ 储能电池

□ 备用电池

□ 摩托车电池



规格书

TNG12-135

额定电压	12V	
容量(25°C)	143Ah	20hr Rate(1.80V/cell)
	135Ah	10hr Rate(1.80V/cell)
	116Ah	5hr Rate(1.75V/cell)
	108Ah	3hr Rate(1.70V/cell)
	82Ah	1hr Rate(1.60V/cell)
壳体材料	ABS (阻燃ABS壳体可选)	
使用温度范围	放电	-20 ~ +50°C
	充电	0 ~ +40°C
	储存	-15 ~ +40°C
不同温度下电 池容量系数	40°C / 104°F	106%
	25°C / 77°F	100%
	0°C / 32°F	86%
	-10°C / 14°F	65%
充电电压	浮充	2.25 -2.30V/单格@25°C, 温度补偿系数: -3mV/单格/°C
	均充	2.35 -2.40V/单格@25°C, 温度补偿系数: -3mV/单格/°C
	循环使用	2.40 -2.50V/单格@25°C, 温度补偿系数: -5mV/单格/°C
最大充电电流	40.5A (0.3C)	
最大放电电流(5S)	1350A	
电阻	4mΩ	
自放电	<3%, TN系列储存在25°C 时需每6个月进行一次补充充电, 环境温度更高时则充电间隔时间越短	

放电性能

恒电流放电表 (25°C/77°F) 单位: A															
F.V/Time	5min	10min	15min	20min	30min	45min	1h	2h	3h	4h	5h	6h	8h	10h	20h
1.85V/cell	226.7	178.2	151.6	126.7	100.7	77.3	63.59	40.49	31.99	26.19	21.10	18.40	14.90	12.71	7.096
1.80V/cell	304.2	227.7	183.1	149.8	118.9	89.9	71.28	44.19	34.49	27.99	22.69	19.70	15.80	13.51	7.168
1.75V/cell	343.0	250.1	200.0	161.2	123.4	93.3	74.58	45.89	35.09	28.59	23.19	20.30	16.10	13.61	7.239
1.70V/cell	377.8	272.7	213.6	169.4	128.4	97.1	76.88	47.69	36.09	29.29	23.79	20.70	16.30	13.81	7.372
1.65V/cell	416.5	294.3	227.0	180.0	135.5	99.5	79.48	48.99	37.59	30.29	24.49	21.10	16.60	14.11	7.474
1.60V/cell	459.4	319.5	242.8	191.7	143.0	103.6	82.38	50.69	38.79	31.29	25.29	21.60	16.70	14.21	7.515

恒功率放电表 (25°C/77°F) 单位: W															
F.V/Time	5min	10min	15min	20min	30min	45min	1h	2h	3h	4h	5h	6h	8h	10h	20h
1.85V/cell	226.7	178.2	151.6	126.7	100.7	77.3	63.59	40.49	31.99	26.19	21.10	18.40	14.90	12.71	6.950
1.80V/cell	304.2	227.7	183.1	149.8	118.9	89.9	71.28	44.19	34.49	27.99	22.69	19.70	15.80	13.51	7.020
1.75V/cell	343.0	250.1	200.0	161.2	123.4	93.3	74.58	45.89	35.09	28.59	23.19	20.30	16.10	13.61	7.090
1.70V/cell	377.8	272.7	213.6	169.4	128.4	97.1	76.88	47.69	36.09	29.29	23.79	20.70	16.30	13.81	7.220
1.65V/cell	416.5	294.3	227.0	180.0	135.5	99.5	79.48	48.99	37.59	30.29	24.49	21.10	16.60	14.11	7.320
1.60V/cell	459.4	319.5	242.8	191.7	143.0	103.6	82.38	50.69	38.79	31.29	25.29	21.60	16.70	14.21	7.360