

Motive Battery

Energy Storage Battery

Reserve Battery

Motorcycle Battery



Energy Storage Battery-AGM-GEL Technology-TNG Series

TNG12-250B

(12V 250Ah)

GENERAL FEATURES

- ◆ Oxygen recombination technology: maintenance-free, no need to add water or acid
- ◆ The patent grid alloy: less gassing, low self-discharge, excellent corrosion resistance
- ◆ Special paste formula: additives for deep discharge, long cycle life
- ◆ High quality AGM separator: extend cycle life and prevent micro short circuit
- ◆ The patent Nano silica electrolytes, extend cycle life and improve the deep discharge performance
- ◆ ABS container: increase the strength of battery (Flame-retardant ABS UL94-V0 is optional)



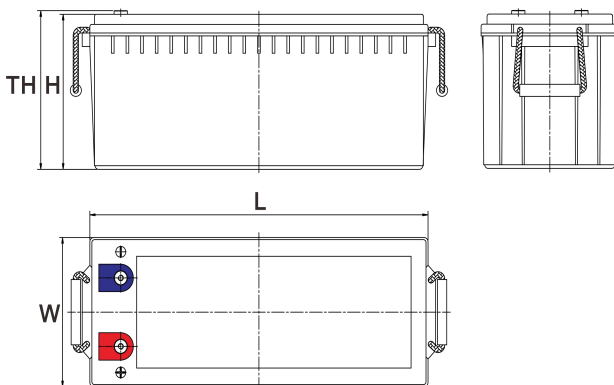
Application

- ◆ Renewable energy system
- ◆ Hybrid solar power system
- ◆ Uninterrupted Power Supply (UPS)
- ◆ Communications and electric equipment
- ◆ Emergency lighting equipment
- ◆ Fire alarm and security systems
- ◆ Robots, control equipment, and other factory automation equipment
- ◆ Emergency power supply (EPS)
- ◆ Various power toy and hobby equipment
- ◆ Lighting equipment

Dimension

Unit:mm

Length	520±2mm / 20.47inch
Width	268±2mm / 10.59inch
Container Height	220±3mm / 8.66inch
Total Height	225±3mm / 8.86inch



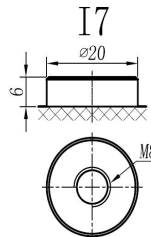
Terminal

Unit:mm

Terminal Type: I7

Weight

73.1kg 161.16lbs



This document is subject to change without prior notification

Motive Battery

Energy Storage Battery

Reserve Battery

Motorcycle Battery



TNG12-250B

Specification

Nominal Voltage	12V	
Rated Capacity(25°C)	265Ah	20hr Rate(1.80V/cell)
	250Ah	10hr Rate(1.80V/cell)
	215Ah	5hr Rate(1.75V/cell)
	201Ah	3hr Rate(1.70V/cell)
	152Ah	1hr Rate(1.60V/cell)
Container Material	ABS (Flame-retardant ABS UL94-V0 is optional)	
Operating Temperature Range	Discharge	-20 ~ +50°C
	Charge	0 ~ +40°C
	Storage	-15 ~ +40°C
Capacity Effected by Temperature	40°C / 104°F	106%
	25°C / 77°F	100%
	0°C / 32°F	86%
	-10°C / 14°F	65%
	Float Voltage	2.25 -2.30V/cell@25°C, Tem. Coefficient: -3mV/cell/°C
Charge Voltage	Equalize Voltage	2.35 -2.40V/cell@25°C, Tem. Coefficient: -3mV/cell/°C
	Cycle Voltage	2.40 -2.50V/cell@25°C, Tem. Coefficient: -5mV/cell/°C
Max Charging Current	75A (0.3C)	
Max. Discharge Current (5S)	2500A	
Internal Resistance	2.5mΩ	
Self Discharge	<3%, TN series stored at 25 °C require a supplementary charge every six months, the charging interval would shrink when the ambient temperature went higher	

Discharge Performance

Constant Current Discharge Table (25°C/77°F) Unit: A													
F.V/Time	15min	20min	30min	45min	1h	2h	3h	4h	5h	6h	8h	10h	20h
1.85V/cell	280.7	234.7	186.6	143.1	117.87	75.08	59.39	48.49	39.09	34.00	27.60	23.62	13.171
1.80V/cell	339.1	277.5	220.1	166.5	131.97	81.88	63.89	51.79	41.99	36.50	29.30	25.03	13.273
1.75V/cell	370.4	298.5	228.6	172.8	138.07	84.98	65.09	52.89	42.99	37.50	29.80	25.33	13.375
1.70V/cell	395.4	313.7	237.9	179.7	142.47	88.38	66.88	54.29	44.19	38.30	30.20	25.53	13.682
1.65V/cell	420.4	333.2	250.9	184.2	147.27	90.78	69.68	56.19	45.39	39.10	30.70	26.03	13.784
1.60V/cell	449.7	355.0	265.0	192.0	152.47	93.88	71.88	57.99	46.89	40.00	31.00	26.33	13.886

Constant Power Discharge Table (25°C/77°F) Unit: W													
F.V/Time	15min	20min	30min	45min	1h	2h	3h	4h	5h	6h	8h	10h	20h
1.85V/cell	202.1	181.9	150.5	121.0	99.78	59.89	46.29	38.09	32.39	28.30	22.80	19.12	10.100
1.80V/cell	229.5	202.5	161.5	127.2	105.98	63.19	48.59	39.79	33.79	29.60	23.70	20.02	10.500
1.75V/cell	252.2	218.3	171.0	133.8	110.58	65.89	50.39	41.09	34.79	30.30	24.10	20.22	10.600
1.70V/cell	269.2	233.4	179.3	138.9	114.47	67.78	51.69	41.99	35.39	30.80	24.50	20.42	10.700
1.65V/cell	283.7	245.0	188.2	144.9	118.57	69.78	52.89	42.89	36.19	31.30	24.90	20.72	10.800
1.60V/cell	297.4	254.0	194.6	148.8	121.37	71.48	53.99	43.49	36.69	31.80	25.20	20.92	11.000

□ 动力电池

■ 储能电池

□ 备用电池

□ 摩托车电池



储能电池-AGM-凝胶技术-TNG系列

TNG12-250B

(12V 250Ah)

产品特点

- ◆ 阀控式免维护设计，寿命期间无需加水或加酸
- ◆ 专利稀土合金板栅，减少气体产生，自放电率低，抗腐蚀能力出众
- ◆ 特制组成配方，添加特殊试剂，增进深放电性能，延长循环寿命
- ◆ 高质量AGM隔板：防止微短路，延长循环寿命
- ◆ 纳米硅胶专利电解质，延长循环寿命，增进深放电性能
- ◆ ABS壳盖：电池外壳强度高（阻燃壳体UL94-V0可选）



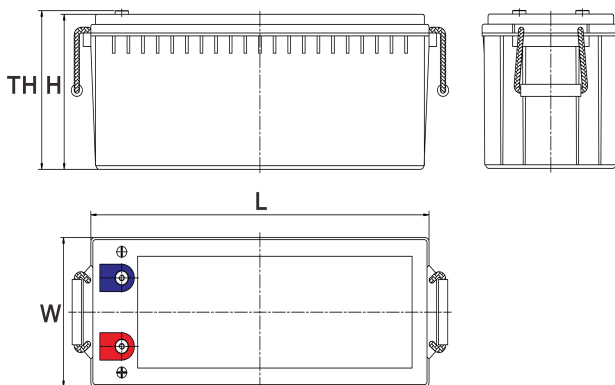
产品应用

- ◆ 可再生能源系统
- ◆ 太阳能混合动力系统
- ◆ 不间断电源 (UPS)
- ◆ 通信及电力设备
- ◆ 应急照明系统
- ◆ 安防及火灾报警系统
- ◆ 机械自动化控制设备
- ◆ 应急电源 (EPS)
- ◆ 各式电动玩具及娱乐设施
- ◆ 照明设备

尺寸

单个尺寸

长	520±2mm / 20.47inch
宽	268±2mm / 10.59inch
高	220±3mm / 8.66inch
总高	225±3mm / 8.86inch



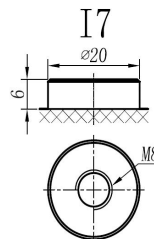
端子类型

单位:mm

端子类型 I7

重量

73.1kg 161.16lbs



ISO9001 ISO14001 OHSAS18001

内容如有改动，恕不另行通知

动力电池 储能电池 备用电池 摩托车电池

规格书

TNG12-250B

额定电压	12V
容量(25°C)	265Ah 20hr Rate(1.80V/cell)
	250Ah 10hr Rate(1.80V/cell)
	215Ah 5hr Rate(1.75V/cell)
	201Ah 3hr Rate(1.70V/cell)
	152Ah 1hr Rate(1.60V/cell)
壳体材料	ABS (阻燃ABS壳体可选)
使用温度范围	放电 -20 ~ +50°C
	充电 0 ~ +40°C
	储存 -15 ~ +40°C
不同温度下电池容量系数	40°C / 104°F 106%
	25°C / 77°F 100%
	0°C / 32°F 86%
	-10°C / 14°F 65%
充电电压	浮充 2.25 -2.30V/单格@25°C, 温度补偿系数: -3mV/单格/°C
	均充 2.35 -2.40V/单格@25°C, 温度补偿系数: -3mV/单格/°C
	循环使用 2.40 -2.50V/单格@25°C, 温度补偿系数: -5mV/单格/°C
最大充电电流	75A (0.3C)
最大放电电流(5S)	2500A
电阻	2.5mΩ
自放电	<3%, TN系列储存在25°C时需每6个月进行一次补充充电, 环境温度更高时则充电间隔时间越短

放电性能

恒电流放电表 (25°C/77°F) 单位: A													
F.V/Time	15min	20min	30min	45min	1h	2h	3h	4h	5h	6h	8h	10h	20h
1.85V/cell	280.7	234.7	186.6	143.1	117.87	75.08	59.39	48.49	39.09	34.00	27.60	23.62	13.171
1.80V/cell	339.1	277.5	220.1	166.5	131.97	81.88	63.89	51.79	41.99	36.50	29.30	25.03	13.273
1.75V/cell	370.4	298.5	228.6	172.8	138.07	84.98	65.09	52.89	42.99	37.50	29.80	25.33	13.375
1.70V/cell	395.4	313.7	237.9	179.7	142.47	88.38	66.88	54.29	44.19	38.30	30.20	25.53	13.682
1.65V/cell	420.4	333.2	250.9	184.2	147.27	90.78	69.68	56.19	45.39	39.10	30.70	26.03	13.784
1.60V/cell	449.7	355.0	265.0	192.0	152.47	93.88	71.88	57.99	46.89	40.00	31.00	26.33	13.886

恒功率放电表 (25°C/77°F) 单位: W													
F.V/Time	15min	20min	30min	45min	1h	2h	3h	4h	5h	6h	8h	10h	20h
1.85V/cell	202.1	181.9	150.5	121.0	99.78	59.89	46.29	38.09	32.39	28.30	22.80	19.12	10.100
1.80V/cell	229.5	202.5	161.5	127.2	105.98	63.19	48.59	39.79	33.79	29.60	23.70	20.02	10.500
1.75V/cell	252.2	218.3	171.0	133.8	110.58	65.89	50.39	41.09	34.79	30.30	24.10	20.22	10.600
1.70V/cell	269.2	233.4	179.3	138.9	114.47	67.78	51.69	41.99	35.39	30.80	24.50	20.42	10.700
1.65V/cell	283.7	245.0	188.2	144.9	118.57	69.78	52.89	42.89	36.19	31.30	24.90	20.72	10.800
1.60V/cell	297.4	254.0	194.6	148.8	121.37	71.48	53.99	43.49	36.69	31.80	25.20	20.92	11.000