



## 3FM200S (6V200Ah)

LONGWAY® 3FM200S is specially designed for green energy systems. 3FM200S have a good deep cycle property, maintenance-free. It can be used for more than 350 cycles at 100% discharge in cycle service, up to 12 years in standby service.



### Specifications:

Cells per Unit	3
Normal Voltage	6V
Capacity	200Ah@10Hr-rate to 1.80V per cell@25°C
	230Ah@10Hr-rate to 1.90V per cell@25°C
Weight	Approx. (29.5±3%)kg(63.90bs)
Maximum Discharge Current	2000A(5sec)
Internal Resistance	Approx. 4.2mΩ full charged @25°C
Operating Temperature Range	Discharge: -20°C~60°C
	Charge: 0°C~50°C
	Storage: -20°C~60°C
Nominal Operating Temperature Range	25°C±3°C(77°F±5°F)
Float Charging Voltage	6.75~6.9VDC/unit Average @25°C
Maximum Charging Current	60A
Equalization and Cycle Service	7.20V~7.50VDC/unit Average @ 25°C
Self Discharge	LONGWAY Valve Regulated Lead Acid (VRLA) batteries can be stored for more than 6 months at 25°C. Self-discharge ratio less than 3% per month at 25°C. Please charge batteries before using.
Terminal	F11/F21(0.250)
Container Material	ABS(UL94-HB) *Flammability resistance of (UL94-V0) can be available upon request



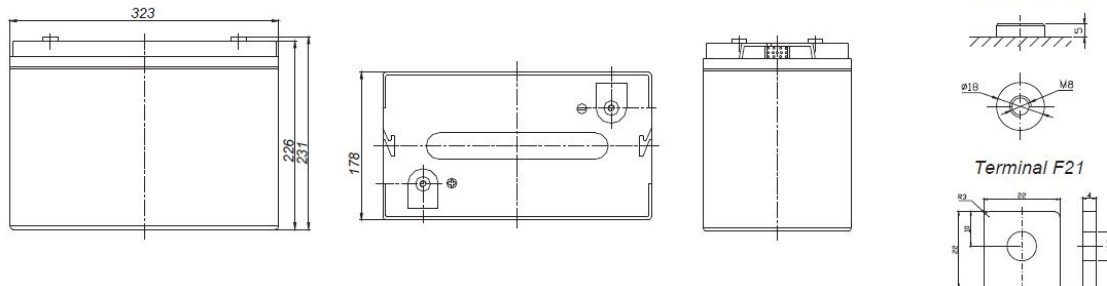
ISO 9001:2008 Standard



ISO 14001:2004 Standard



### Dimensions: L323\*W178\*H224(TH248)mm



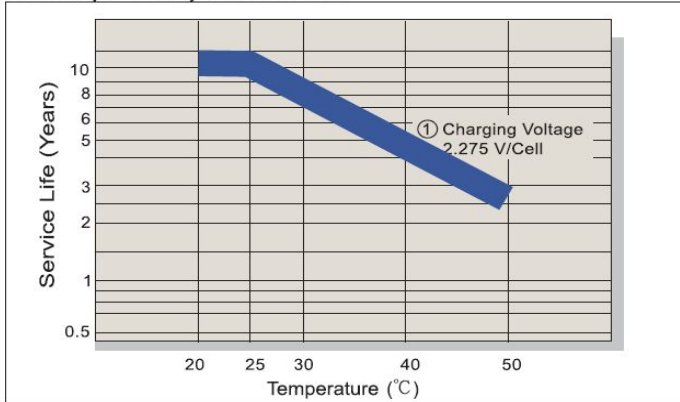
### Constant Current Discharge Characteristics (A, 25 °C)

F.V/TIME	15min	30min	60min	2h	3h	5h	8h	10h	20h	48h	100h
4.80	362.0	226.0	130.0	78.30	53.80	36.54	24.48	20.30	10.66	4.95	2.40
6.45	354.8	221.5	127.4	77.91	53.53	36.36	24.24	20.20	10.61	4.87	2.39
5.10	347.5	217.0	124.8	76.76	53.00	36.00	24.14	20.12	10.56	4.78	2.35
5.25	336.7	210.2	120.9	76.00	52.47	35.64	24.00	20.05	10.53	4.73	2.32
5.40	330.1	206.1	118.6	75.22	51.94	35.28	23.52	20.00	10.50	4.65	2.30

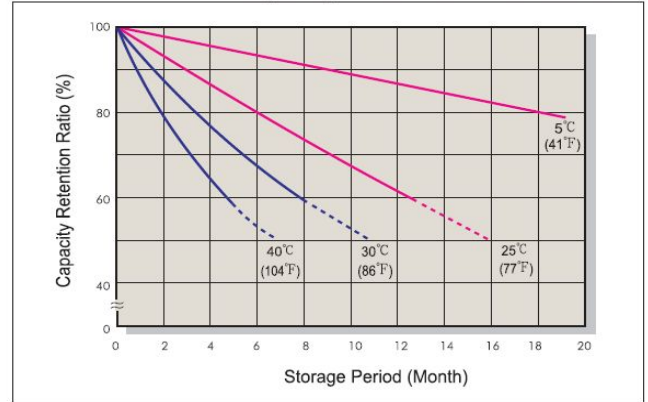
### Constant Power Discharge Characteristics (Watt, 25 °C)

F.V/TIME	15min	30min	60min	2h	3h	5h	8h	10h	20h	48h	100h
4.80	1997	1288	753	453	316	216	147	121	63.9	29.64	14.38
6.45	1957	1262	726	451	315	215	145	121	63.6	29.14	14.32
5.10	1917	1237	711	444	312	213	145	120	63.4	28.61	14.07
5.25	1857	1198	689	440	309	211	144	120	63.2	28.30	13.88
5.40	1821	1175	676	436	305	209	141	119	63.0	27.83	13.77

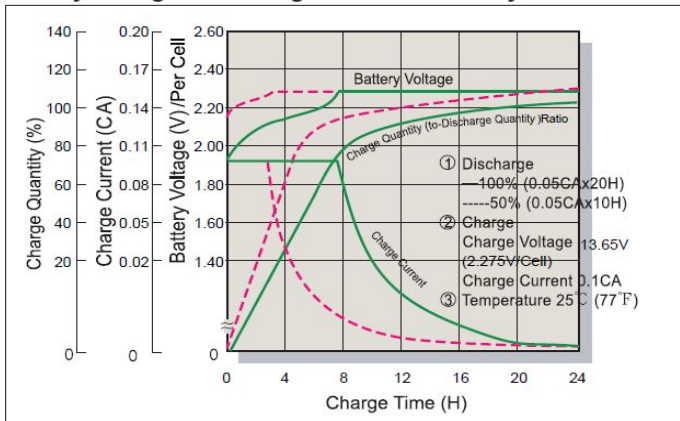
### Trickle (or Float) Service Life



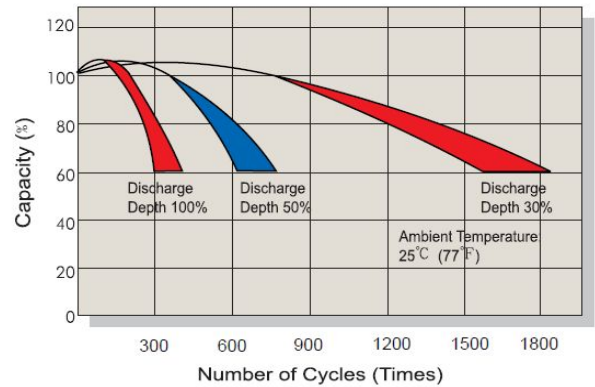
### Capacity Retention Characteristic



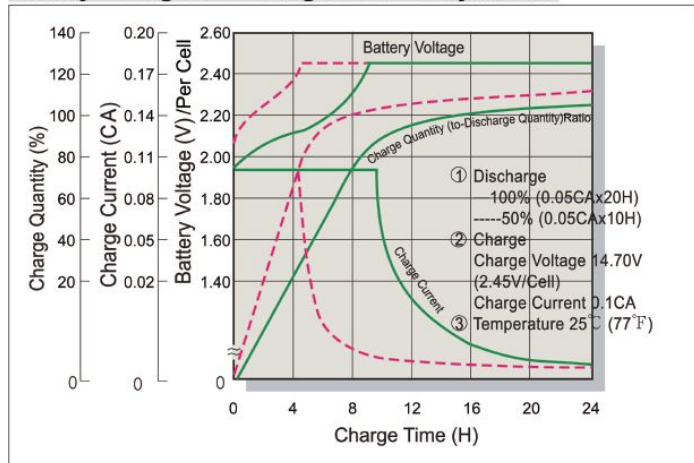
### Battery Voltage and Charge Time for Standby Use



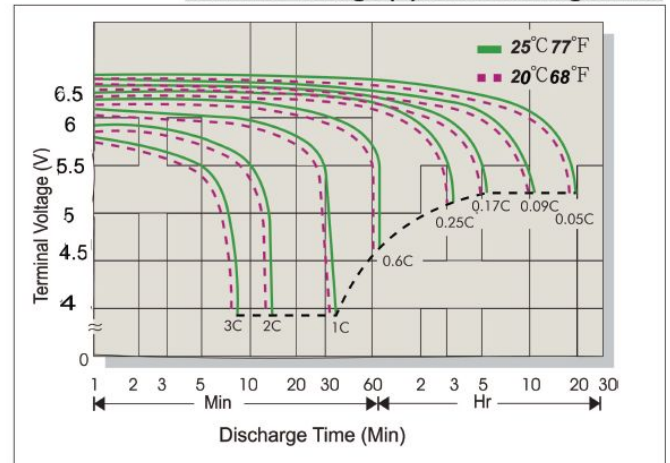
### Cycle Service Life



### Battery Voltage and Charge Time for Cycle Use



### Terminal Voltage (V) and Discharge Time



### Charging Procedures

Application	Charge Voltage(V/cell)			Max. Charge Current
	Temperature	Set Point	Allowable Range	
Cycle Use	25°C(77°F)	2.45	2.40~2.50	0.3C
Standby	25°C(77°F)	2.275	2.25~2.30	

### Discharge Current VS. Discharge Voltage

Final Discharge Voltage V/cell	1.75	1.70	1.65	1.60
Discharge Current (A)	0.2C>(A)	0.2C<(A)	0.5C<(A)	(A)>1.0C
		<0.5C	<1.0C	

KaiYing Power Supply & Electrical Equip Co., Ltd.

Address: KaiYing Industrial Park, ChengXiang Town, Anxi, Quanzhou, Fujian China

Tel:86-595-68782266 Fax: 86-0595-68782222

Website: [www.longwaybattery.com](http://www.longwaybattery.com) Email: [Sales@longwaybattery.com](mailto:Sales@longwaybattery.com)