



6FM80S (12V80Ah)

LONGWAY® 6FM80S is specially designed for green energy systems.

6FM80S have a good deep cycle property, maintenance-free. It can be used for more than 350 cycles at 100% discharge in cycle service, up to 12 years in standby service.



ISO 9001:2008 Standard



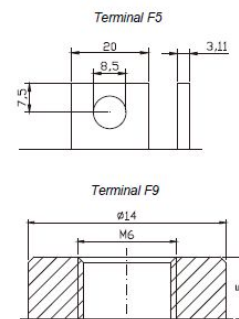
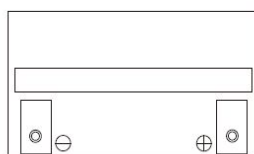
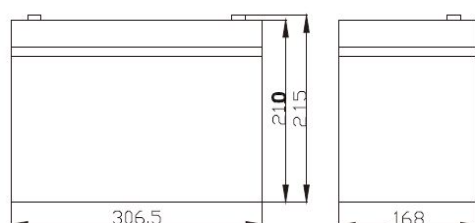
ISO 14001:2004 Standard



Specifications:

Cells per Unit	6
Normal Voltage	12V
Capacity	80Ah@10Hr-rate to 1.80V per cell@25°C
	92Ah@100Hr-rate to 1.90V per cell@25°C
Weight	Approx. (24 ± 3%) kg (52.91bs)
Maximum Discharge Current	800A(5sec)
Internal Resistance	Approx. 6.5mΩ full charged @25°C
Operating Temperature Range	Discharge: -20°C~60°C
	Charge: 0°C~50°C
	Storage: -20°C~60°C
Nominal Operating Temperature Range	25°C±3°C
Float Charging Voltage	13.7~13.9VDC/unit Average @25°C
Maximum Charging Current	20A
Equalization and Cycle Service	14.4V~15.0VDC/unit Average @ 25°C
Self Discharge	LONGWAY Valve Regulated Lead Acid (VRLA) batteries can be stored for more than 6 months at 25°C. Self-discharge ratio less than 3% per month at 25°C. Please charge batteries before using.
Terminal	Terminal F10
Container Material	ABS(UL94-HB) *Flammability resistance of (UL94-V0) can be available upon request

Dimensions: L307*W167*H210(TH215)mm



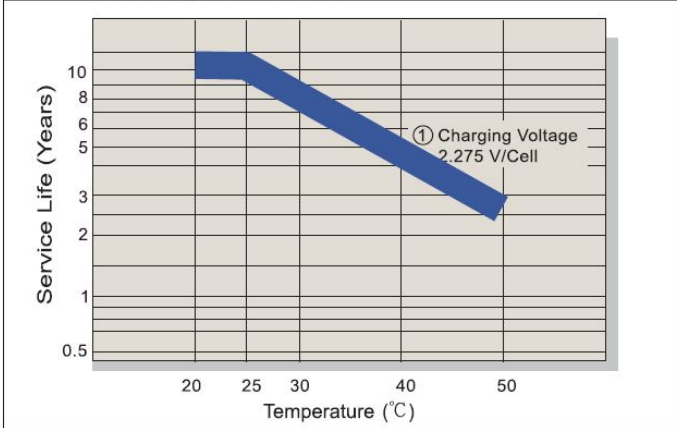
Constant Current Discharge Characteristics (A, 25 °C)

F.V/TIME	15min	30min	60min	2h	3h	5h	8h	10h	20h	48h	100h
9.60	145	90.4	52.0	31.3	21.5	14.6	9.79	8.12	4.26	1.98	0.96
9.90	142	88.6	51.0	31.2	21.4	14.5	9.70	8.08	4.24	1.95	0.96
10.2	139	86.8	49.9	30.7	21.2	14.4	9.66	8.05	4.23	1.91	0.94
10.5	135	84.1	48.4	30.4	21.0	14.3	9.60	8.02	4.21	1.89	0.93
10.8	132	82.4	47.4	30.1	20.8	14.1	7.68	8.00	4.20	1.86	0.92

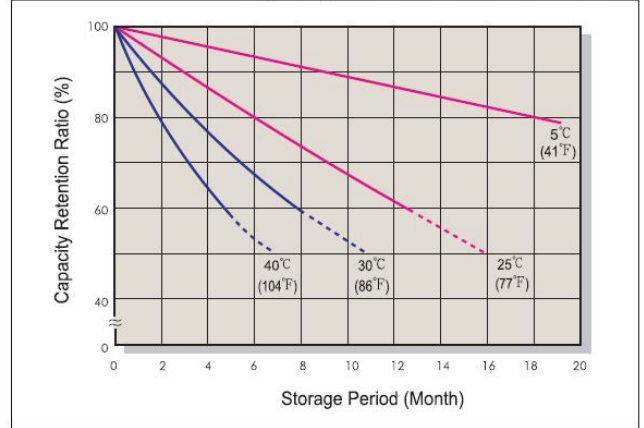
Constant Power Discharge Characteristics (Watt, 25 °C)

F.V/TIME	15min	30min	60min	2h	3h	5h	8h	10h	20h	48h	100h
9.60	1598	1031	602	363	253	173	118	97.0	51.2	3.95	1.92
9.90	1566	1010	581	361	252	172	116	96.5	50.9	3.89	1.91
10.2	1534	989	569	356	249	170	116	96.1	50.7	3.81	1.88
10.5	1486	958	551	352	247	169	115	95.8	50.5	3.77	1.85
10.8	1457	940	541	348	244	167	92.2	95.5	50.4	3.71	1.84

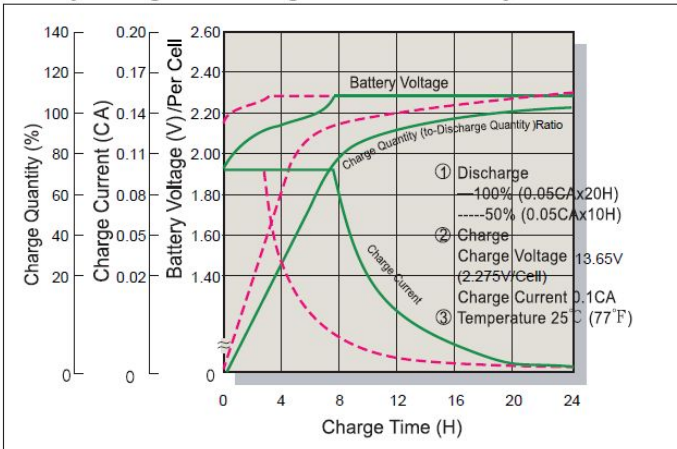
Trickle (or Float) Service Life



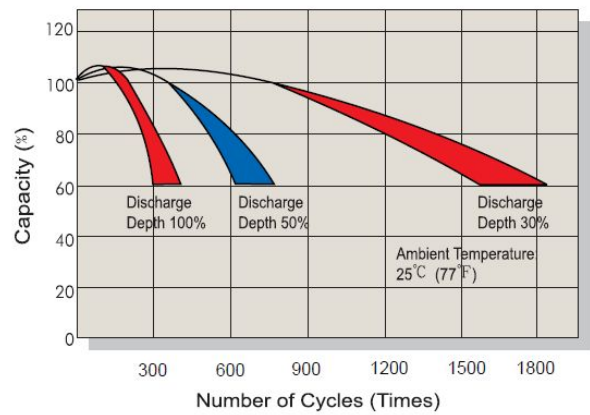
Capacity Retention Characteristic



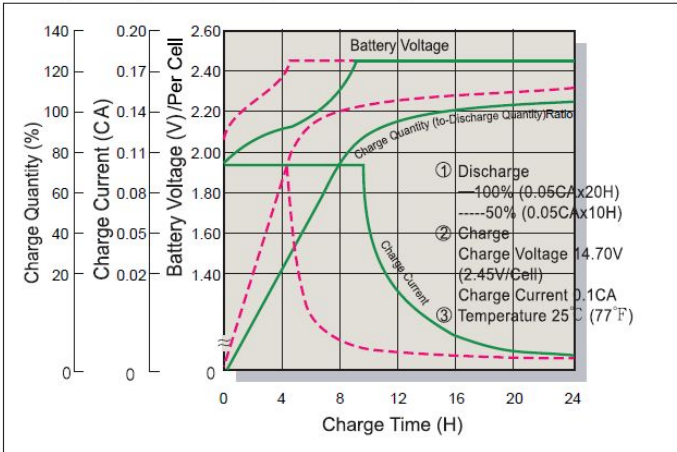
Battery Voltage and Charge Time for Standby Use



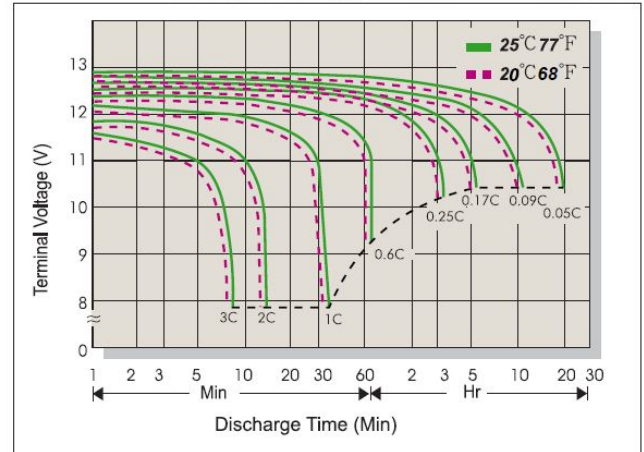
Cycle Service Life



Battery Voltage and Charge Time for Cycle Use



Terminal Voltage (V) and Discharge Time



Charging Procedures

Application	Charge Voltage(V/cell)			Max. Charge Current
	Temperature	Set Point	Allowable Range	
Cycle Use	25°C(77°F)	2.45	2.40~2.50	0.25 C
Standby	25°C(77°F)	2.275	2.25~2.30	

Discharge Current VS. Discharge Voltage

Final Discharge Voltage V/cell	1.75	1.70	1.65	1.60
Discharge Current (A)	0.2C > (A)	0.2C < (A)	0.5C < (A)	(A) > 1.0C

KaiYing Power Supply & Electrical Equip Co., Ltd.

Address: KaiYing Industrial Park, ChengXiang Town, Anxi, Quanzhou, Fujian China

Tel: 86-595-68782266 Fax: 86-0595-68782222

Website: www.longwaybattery.com Email: Sales@longwaybattery.com

KY-IOP-LS2-80 AO.November 2012