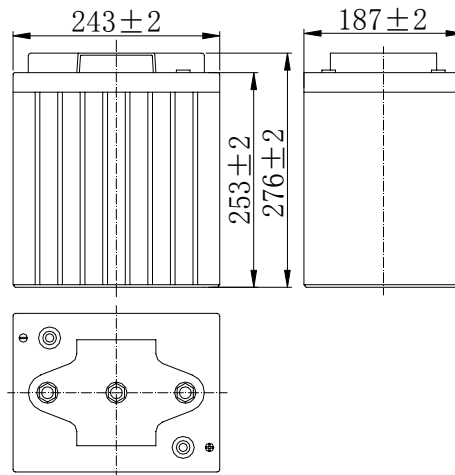


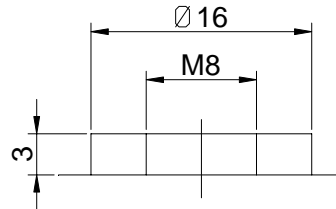
Specifications

Nominal Voltage		6 V
Capacity (25°C)	10HR(5.40V)	190 Ah
	5HR(5.25V)	166Ah
	1HR(4.80V)	119Ah
Dimension	Length	243 ± 2mm (9.57inch)
	Width	187 ± 2mm (7.36inch)
	Height	253 ± 2mm (9.96inch)
	Total Height	276 ± 2mm (10.87inch)
Approx. Weight		28.5kg (62.8lbs) ± 4%
Terminal type		T11
Internal resistance (Fully charged, 25°C)		Approx. 2.2m Ω
Capacity affected by temperature (10HR)	40°C	102%
	25°C	100%
	0°C	85%
	-15°C	65%
Self-discharge (25°C)	3 month	Remaining Capacity: 91%
	6 month	Remaining Capacity: 82%
	12 month	Remaining Capacity: 65%
Nominal operating temperature		25°C ± 3°C (77°F ± 5°F)
Operating temperature range	Discharge	-15°C ~ 50°C (5°F ~ 122°F)
	Charge	-10°C ~ 50°C (14°F ~ 122°F)
	Storage	-20°C ~ 50°C (-4°F ~ 122°F)
Float charging voltage(25°C)		6.75 to 6.90V Temperature compensation: -9mV/°C
Cyclic charging voltage(25°C)		7.25 to 7.45V Temperature compensation: -15mV/°C
Maximum charging current		57A
Terminal material		Copper
Maximum discharge current		1500A(5 sec.)
Designed floating life(20°C)		7~10 years

Dimensions



Terminal



Terminal T11

- ◆ Absorbent glass mat technology;
- ◆ Recognized by UL & CE;
- ◆ ABS container.

Constant Current Discharge Characteristics (A, 25°C)

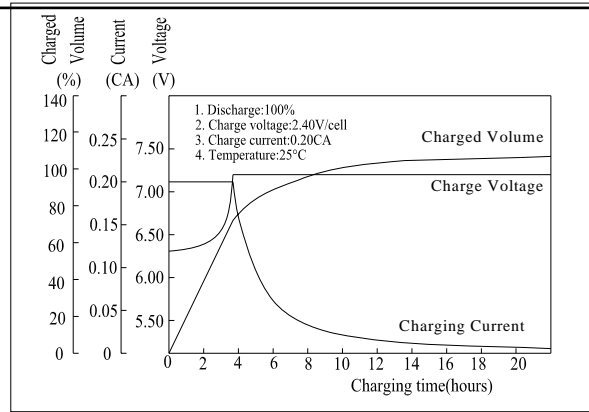
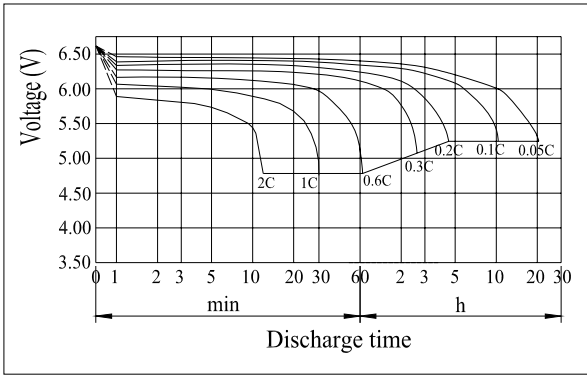
F.V/TIME	15min	30min	60min	2h	3h	4h	5h	6h	8h	10h	20h
4.80V	317	192	119	69.4	48.5	39.7	33.9	29.7	23.3	19.3	10.2
4.95V	309	188	117	69.0	48.2	39.5	33.7	29.5	23.1	19.3	10.1
5.10V	298	182	114	68.4	47.8	39.2	33.5	29.3	23.0	19.2	10.1
5.25V	288	178	112	67.4	47.5	39.0	33.3	29.1	22.8	19.1	10.0
5.40V	272	171	109	65.7	46.1	37.8	32.3	28.2	22.1	19.0	9.98

Constant Power Discharge Characteristics (Watt, 25°C)

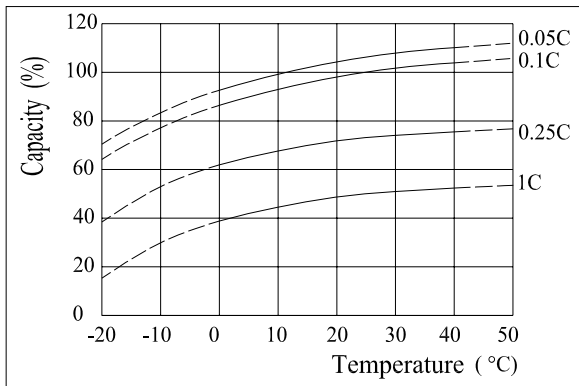
F.V/TIME	15min	30min	60min	2h	3h	4h	5h	6h	8h	10h	20h
4.80V	1738	1077	678	402	285	234	200	175	138	115	60.9
4.95V	1697	1055	668	400	283	232	199	174	137	115	60.8
5.10V	1634	1023	651	396	281	231	198	173	136	115	60.6
5.25V	1578	998	638	390	279	229	197	172	135	114	60.3
5.40V	1495	961	618	380	271	222	191	167	131	113	59.9

Note: The above characteristics data can be obtained within three charge/discharge cycles.

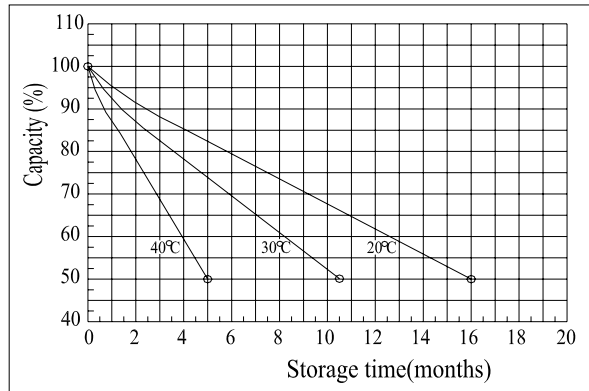
Discharge Characteristics(25°C)



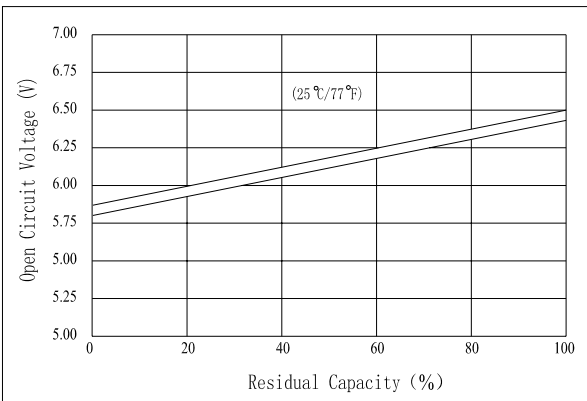
Effect of Temperature on Capacity



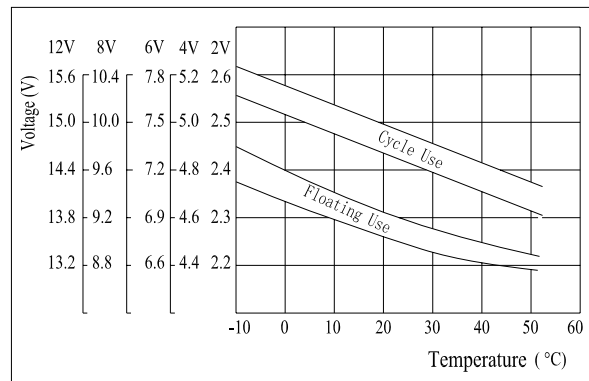
Self-discharge Characteristics



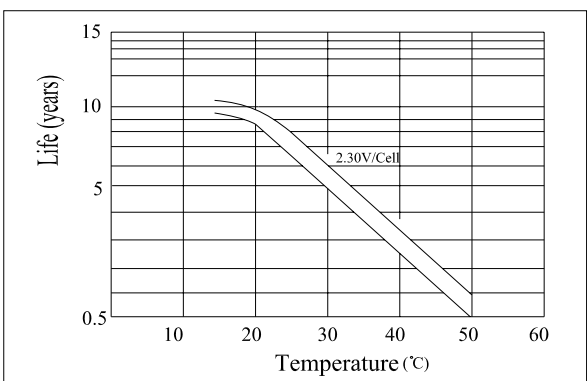
The Relationship for Open Circuit Voltage and Residual Capacity (25°C)



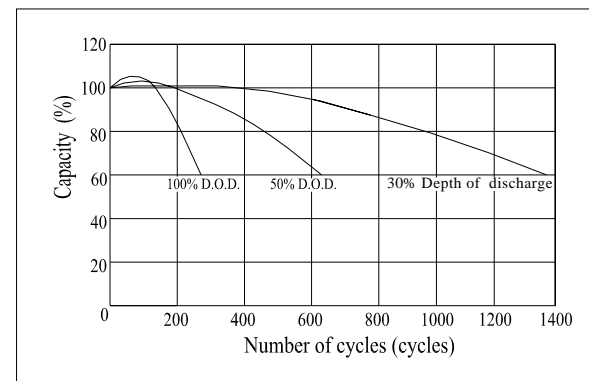
The Relationship for Charging Voltage and Temperature



Floating Life on Temperature



Cycle Life on D.O.D(25°C)



Charging Characteristics(25°C)