

**Specifications**

Nominal Voltage		12 V
Capacity (25°C)	20HR(10.5V)	80 Ah
	5HR(10.2V)	62 Ah
	1HR(9.6V)	46.6 Ah
Dimension	Length	306mm ± 2 (12.05inch)
	Width	169mm ± 2 (6.65inch)
	Height	214mm ± 2 (8.43inch)
	Total Height	214mm ± 2 (8.43inch)
Approx. Weight		27.5kg (60.5lbs) ± 4%
Terminal type		T9
Internal resistance (Fully charged, 25°C)		Approx. 6.5m Ω
Capacity affected by temperature (10HR)	40°C	103%
	25°C	100%
	0°C	88%
	-15°C	70%
Self-discharge (25°C)	3 month	Remaining Capacity: 94%
	6 month	Remaining Capacity: 88%
	12 month	Remaining Capacity: 75%
Nominal operating temperature		25°C ± 3°C (77°F ± 5°F)
Operating temperature range	Discharge	-15°C ~ 55°C (5°F ~ 131°F)
	Charge	-10°C ~ 55°C (14°F ~ 131°F)
	Storage	-20°C ~ 55°C (-4°F ~ 131°F)
Float charging voltage(25°C)		13.50 to 13.80V Temperature compensation: -18mV/°C
Cyclic charging voltage(25°C)		14.10 to 14.40V Temperature compensation: -30mV/°C
Maximum charging current		16 A
Terminal material		Copper
Maximum discharge current		800A(5 sec.)
Designed floating life(20°C)		15 years

- ◆ Gelled electrolyte technology;
- ◆ PVC separator;
- ◆ Recognized by UL & CE;
- ◆ ABS container.

**Constant Current Discharge Characteristics (A, 25°C)**

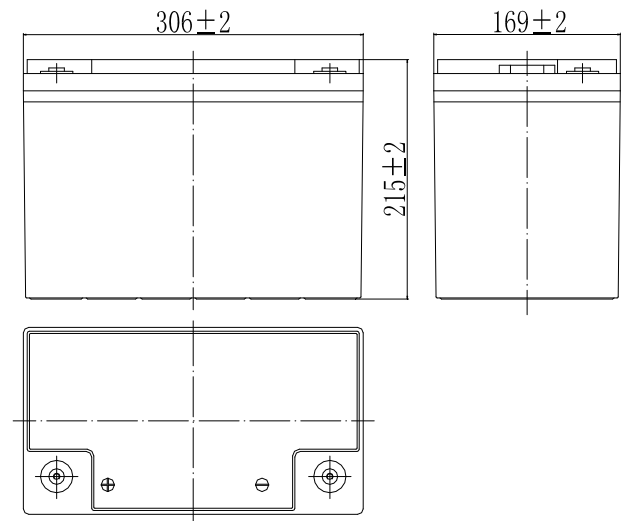
F.V/TIME	15min	30min	60min	2h	3h	4h	5h	6h	8h	10h	20h	48h	120h
9.60V	108	74.6	46.6	27.2	19.2	15.1	12.6	10.8	8.40	7.49	4.07	---	---
9.90V	106	73.1	45.9	27.0	19.0	15.0	12.5	10.8	8.32	7.48	4.06	----	---
10.2V	101	70.8	44.7	26.8	18.9	14.8	12.4	10.7	8.32	7.46	4.05	1.79	---
10.5V	98.7	69.2	43.8	26.4	18.8	14.8	12.4	10.6	8.24	7.40	4.00	1.78	0.74
10.8V	92.4	66.6	42.5	25.8	18.2	14.3	12.0	10.2	7.99	7.36	4.00	1.78	0.74

**Constant Power Discharge Characteristics (Watt, 25°C)**

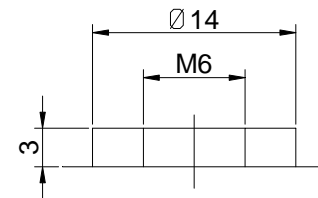
F.V/TIME	15min	30min	60min	2h	3h	4h	5h	6h	8h	10h	20h	48h	120h
9.60V	1205	850	536	316	227	179	150	128	100	89.8	49.2	---	---
9.90V	1176	833	528	315	226	178	149	127	100	89.8	49.2	----	---
10.2V	1132	807	516	312	224	176	148	126	99.6	89.8	49.1	21.4	---
10.5V	1094	788	505	308	222	175	148	125	98.7	88.8	48.3	21.2	8.88
10.8V	1036	759	489	300	215	170	143	122	95.1	88.0	48.4	21.2	8.80

Note: The above characteristics data can be obtained within three charge/discharge cycles.

**Dimensions**

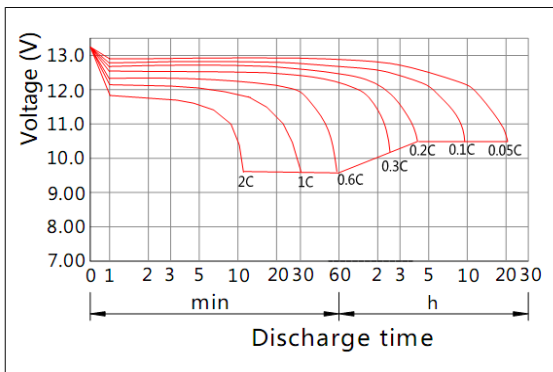


**Terminal**

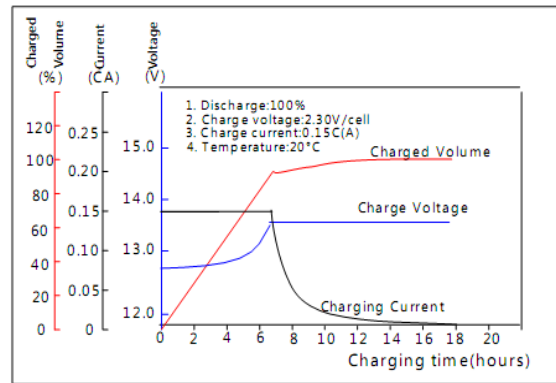


**Terminal T9**

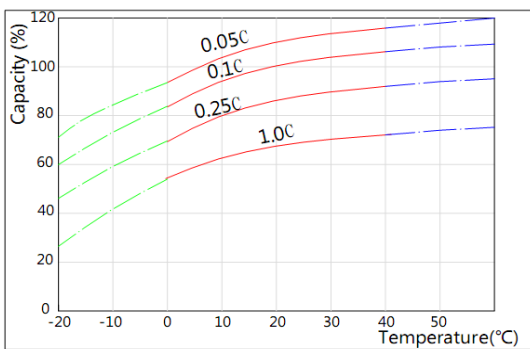
Discharge Characteristics(25°C)



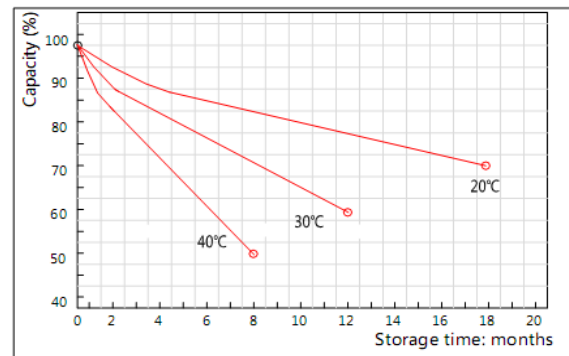
Charging Characteristics(25°C)



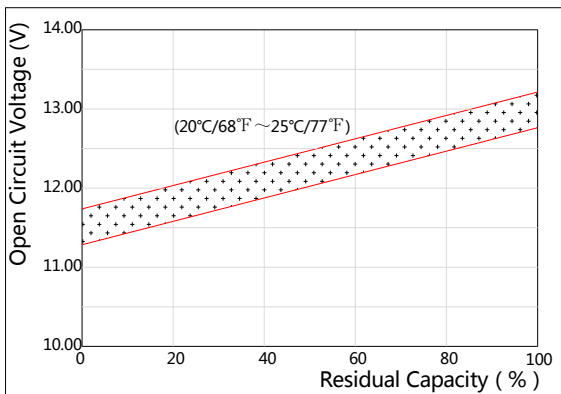
Effect of Temperature on Capacity



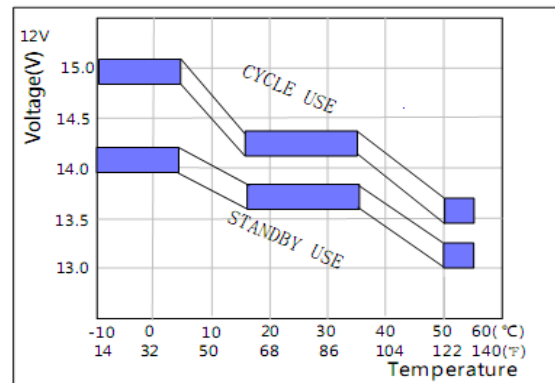
Self-discharge Characteristics



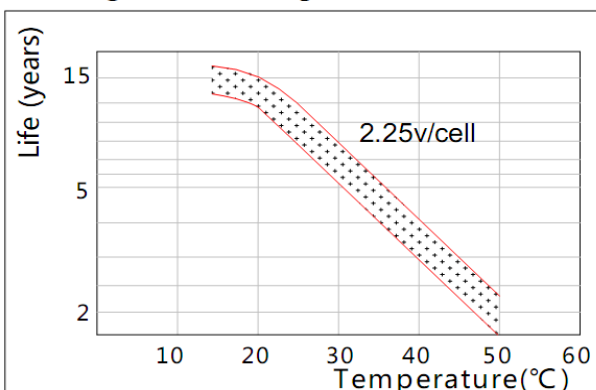
The Relationship for Open Circuit Voltage and Residual Capacity (25°C)



The Relationship for Charging Voltage and Temperature



Floating Life on Temperature



Cycle Life on D.O.D(25°C)

