

GEL12-65 12V65AH

GEL SERIES-GEL Battery



Specification

Nominal Voltage	12V	
Nominal Capacity(10HR)	65AH	
Dimension	Length	348 ± 3mm (13.70 inches)
	Width	167 ± 2mm (6.57 inches)
	Container Height	178 ± 2mm (7.01 inches)
	Total Height (with Terminal)	178 ± 2mm (7.01 inches)
Approx Weight	Approx 18.6Kg (41.0lbs)	
Terminal	T6 / T10	
Container Material	ABS	
Rated Capacity	68.0 AH/3.40A	(20hr ,1.80V/cell,25°C/77°F)
	65.0 AH/6.50A	(10hr,1.80V/cell,25°C/77°F)
	57.2 AH/11.4A	(5hr,1.75V/cell,25°C/77°F)
	51.4 AH/17.1A	(3hr,1.75V/cell,25°C/77°F)
	40.1 AH/40.1A	(1hr,1.60V/cell,25°C/77°F)
Max. Discharge Current	650A (5s)	
Internal Resistance	Approx 8.2 mΩ	
Operating Temp.Range	Discharge : -30 ~50°C (5 ~122°F)	
	Charge : 0 ~40°C (32 ~104°F)	
	Storage : -30 ~40°C (5 ~104°F)	
Nominal Operating Temp. Range	25 ± 3°C (77 ± 5°F)	
Cycle Use	Initial Charging Current less than 19.5 A.Voltage 14.4V~14.9V at 25°C(77°F)Temp. Coefficient -30mV/°C	
	No limit on Initial Charging Current Voltage 13.5V~13.8V at 25°C(77°F)Temp. Coefficient -20mV/°C	
Capacity affected by Temperature	40°C (104 °F)	103%
	25°C (77 °F)	100%
	0°C (32 °F)	86%
Self Discharge	Techfine GEL series batteries may be stored for up to 9 months at 25°C(77°F) and battery should be recharge before use. For higher temperatures the time interval will be shorter.	

Applications

- ◆ Telecommunications
- ◆ Solar system
- ◆ Wind power system
- ◆ Engine starting
- ◆ Wheelchair
- ◆ Floor cleaning machines
- ◆ Golf trolley
- ◆ Boats

ISO 9001	ISO 14001	OHSAS 18001	TLC
CE	RoHS	UL	BV Battery

Constant Current Discharge (Amperes) at 25°C (77°F)

F.V/Time	20min	30min	45min	1h	2h	3h	4h	5h	6h	7h	8h	9h	10h	20h
1.85V/cell	55.0	43.2	32.9	27.6	17.5	13.3	11.0	9.53	8.22	7.28	6.57	6.00	5.67	3.12
1.80V/cell	63.0	48.2	36.3	30.4	18.9	14.3	11.7	10.0	8.63	7.62	6.88	6.31	5.93	3.25
1.75V/cell	70.8	53.0	39.3	32.6	20.1	15.1	12.3	10.4	8.94	7.89	7.10	6.50	6.05	3.32
1.70V/cell	76.2	56.8	41.7	34.5	21.3	15.7	12.7	10.7	9.25	8.15	7.31	6.67	6.19	3.36
1.67V/cell	79.4	59.0	43.2	35.8	21.8	16.2	13.0	10.9	9.40	8.27	7.43	6.76	6.26	3.39
1.60V/cell	86.0	63.2	46.4	38.0	22.7	16.9	13.5	11.3	9.63	8.45	7.56	6.90	6.38	3.44

Constant Power Discharge (Watts) at 25°C (77°F)

F.V/Time	20min	30min	45min	1h	2h	3h	4h	5h	6h	7h	8h	9h	10h	20h
1.85V/cell	105.3	83.2	63.9	53.7	34.2	26.1	21.7	18.8	16.3	14.5	13.1	12.0	11.3	6.23
1.80V/cell	119.0	92.1	69.9	58.9	36.8	27.9	22.9	19.7	17.0	15.1	13.7	12.5	11.8	6.48
1.75V/cell	132.2	100.3	75.0	62.8	38.9	29.4	23.9	20.4	17.6	15.6	14.1	12.9	12.0	6.60
1.70V/cell	140.9	106.5	79.1	66.0	41.0	30.5	24.7	21.0	18.2	16.1	14.5	13.2	12.3	6.68
1.67V/cell	145.0	109.5	81.3	68.1	41.9	31.3	25.2	21.3	18.4	16.3	14.6	13.4	12.4	6.74
1.60V/cell	155.4	116.1	86.7	71.9	43.4	32.4	26.0	21.9	18.8	16.6	14.9	13.6	12.6	6.82

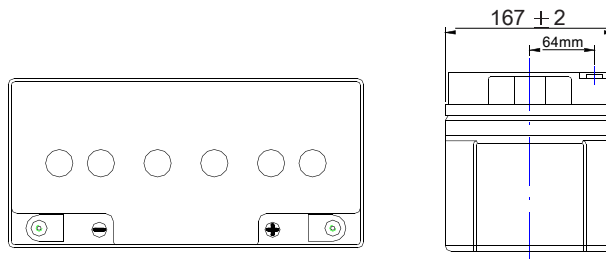
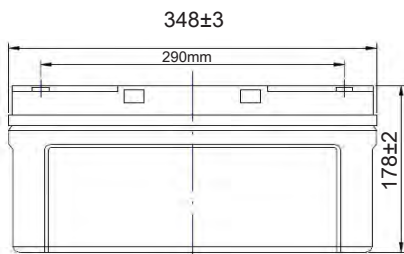
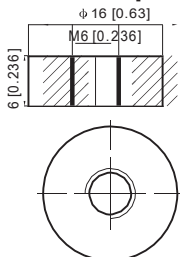
Note The above data are average values, and can be obtained with 3 charge/discharge cycles. These are not minimum values.

GEL12-65 12V65AH GEL SERIES-GEL Battery

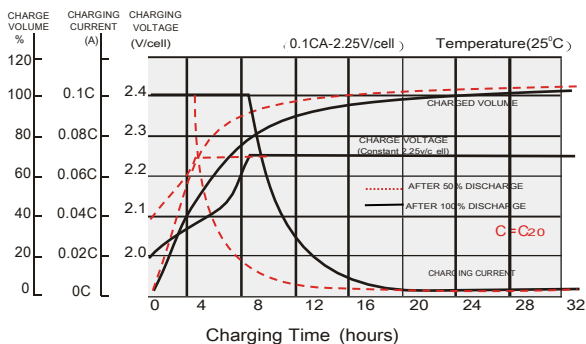
Dimensions

T6 Terminal

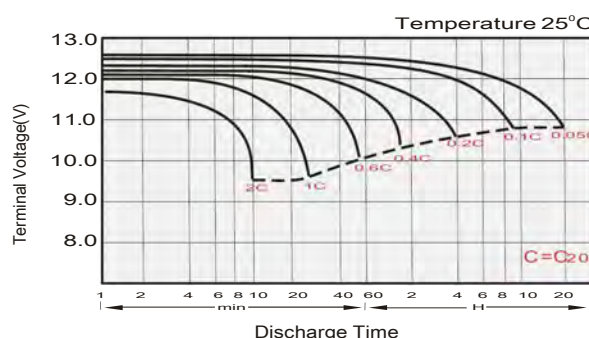
Unit: mm [inches]



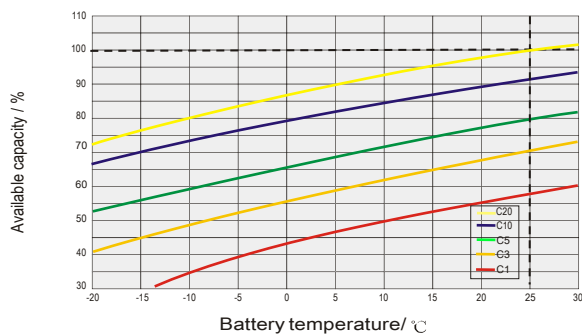
Float Charging Characteristics



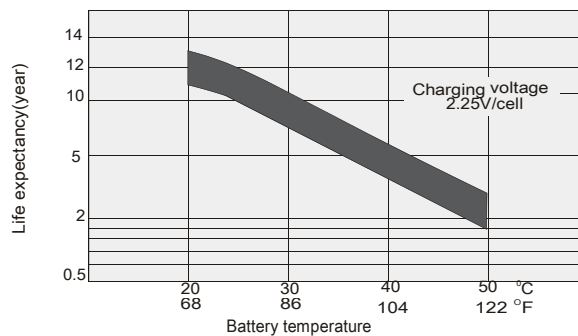
Discharge Characteristics



Temperature Effects in Relation to Battery Capacity

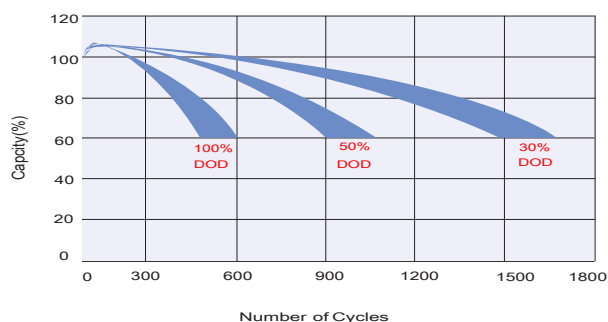


Effect of Temperature on Long Term Float Life

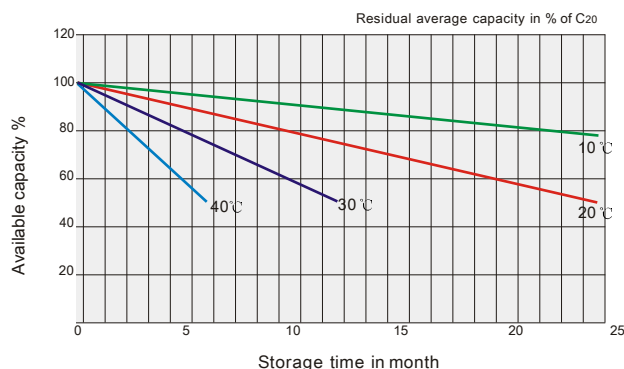


Cycle Life in Relation to Depth of Discharge

Testing condition
Discharging: current 0.17C (FV 1.7V/cell);
Charging: current 0.25C max, voltage 2.45V/cell;
Charging volume: 125% of discharged capacity.



General Relation of Capacity VS. Storage Time



TECHFINE GEL BATTERIES

This information is generally descriptive only and is not intended to make or imply any representation, guarantee or warranty with respect to any cells and batteries. Cell and battery designs/specification are subject to modification without notice. Contact us for the latest information.