

GENERAL FEATURES

- **GEL Technology** - The success of DG batteries comes from the internationally superior Gel technology. It is ideal for standby or frequent cyclic discharge applications under extreme environments
- **Front Access Connection** - Front access connection for fast, easy installation and maintenance with standard width for 19' and 23' ETSI racks.
- **Long Service Life** - Especially designed for telecommunication use with 10+ years design life in float service. By combining the newly developed paste formula with up-to-date GEL structures, this range features 12 years design life.
- **Maintenance-Free, Non-Spillable** - Proven VRLA technology guarantees safe operation without maintenance and 'non-restricted article' status for transportation.
- **Designed-In Reliability** - Cutting-edge manufacturing and process control combined with meticulous quality assurance procedures guarantee consistent and dependable performance

PERFORMANCE SPECIFICATIONS

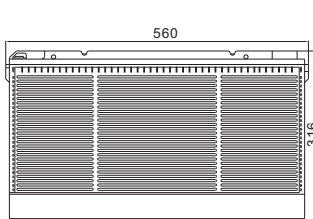
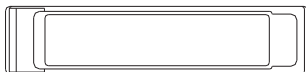
Nominal Voltage	12V(6 cells)	
Design Floating Life @25°C	12 Years	
Nominal Capacity @25°C	20 hour rate	180.0Ah
	9.0A to 10.50V	
	10 hour rate	156.0Ah
	15.6A to 10.50V	
Internal Resistance	5 hour rate	136.5Ah
	27.3A to 10.50V	
	3 hour rate	123.0Ah
	41.0A to 9.60V	
Energy Density (20-hr. rate)	1 hour rate	100.6Ah
	100.6A to 9.60V	
Specific Energy (20-hr. rate)	Full Charged Battery@25°C	<5.0mΩ
Shelf Life (nominal capacity at 20°C)	1 Month	97%
Max Short-Duration Discharge Current	3 Months	91%
	6 Months	83%
Standby Use Charge (Constant Voltage) @25°C	5 Sec	1800A
	Initial Charging	
Cycle Use Charge (Constant Voltage) @25°C	Current Less than 36A	
	Voltage 13.6 - 13.8V	
Operating Temperature Range	Initial Charging	
	Current Less than 36A	
	Voltage 14.4 - 14.9V	
	Charge	-20°C to 50°C
	Discharge	-40°C to 60°C

GENERAL FEATURES

mm

Unit: mm

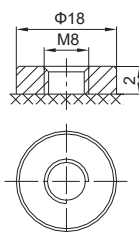
Length	560±1	Total Height	316±1
Width	125±1	Weight(kg)	52.0±1
Height	316±1		

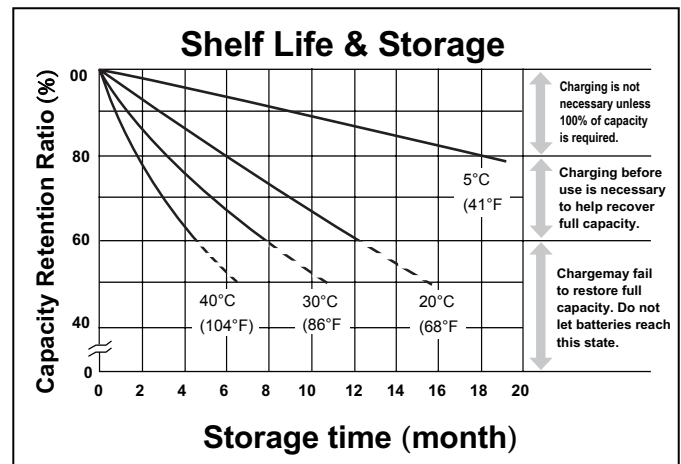
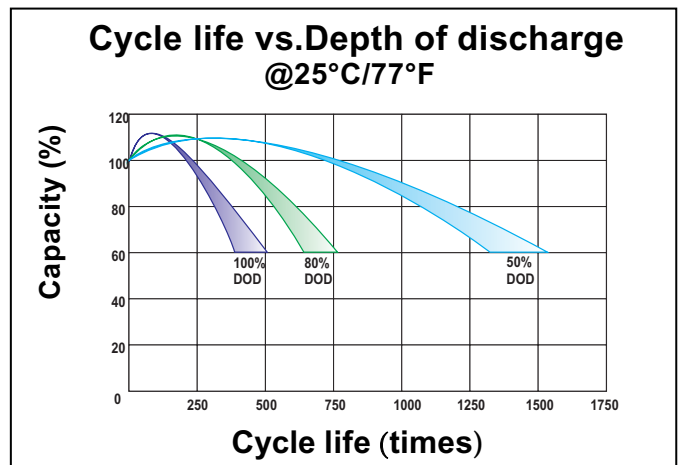
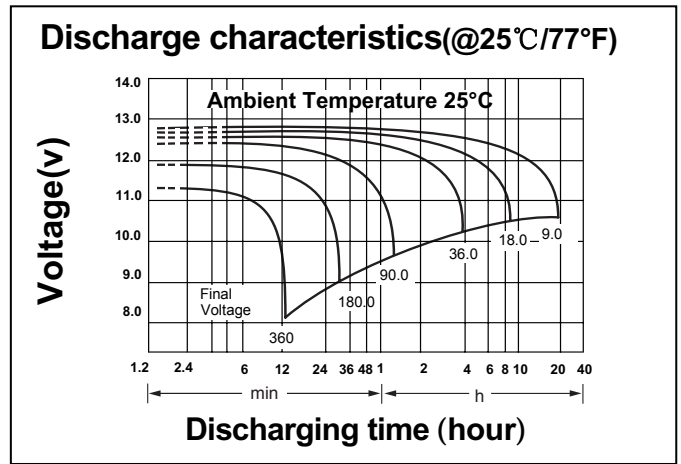


TERMINALS

mm

F9 Terminal





CONSTANT CURRENT DISCHARGE RATINGS (Amperes at 25°C)

F.V/Time	15MIN	30MIN	1HR	2HR	3HR	4HR	5HR	8HR	10HR	20HR
1.60V	246.3	165.0	100.6	60.2	41.6	34.1	27.9	19.2	16.3	9.90
1.65V	241.2	163.6	100.2	59.8	41.5	33.9	27.8	19.1	16.1	9.54
1.70V	237.4	162.6	99.2	59.3	41.1	33.8	27.6	18.9	15.9	9.27
1.75V	228.7	160.1	98.3	58.8	41.0	33.5	27.3	18.8	15.8	9.00
1.80V	213.3	154.5	96.0	57.8	39.9	32.7	26.8	18.4	15.6	8.46
1.85V	193.5	146.1	91.2	55.2	38.1	31.1	25.6	17.7	15.2	8.10