

LPS SERIES-Solar Power

LPS2-350 (2V345AH)

Specification

Nominal Voltage	2V	
Nominal Capacity(100HR)	345.0AH	
Dimension	Length	170±2mm (6.69 inches)
	Width	150±2mm (5.91 inches)
	Container Height	328±2mm (12.91 inches)
	Total Height (with Terminal)	350±2mm (13.78 inches)
Approx Weight	Approx 18.3 Kg/40.4 lbs)	
Terminal	T11	
Container Material	ABS	
Rated Capacity	345.0 AH/3.45A	(100hr , 1.80V/cell, 25°C/77°F)
	322.0 AH/16.1A	(20hr , 1.80V/cell, 25°C/77°F)
	300.0 AH/30.0A	(10hr, 1.80V/cell, 25°C/77°F)
	263.5 AH/52.7A	(5hr, 1.75V/cell, 25°C/77°F)
	176.4 AH/176.4A	(1hr, 1.60V/cell, 25°C/77°F)
Max. Discharge Current	2400A (5s)	
Internal Resistance	Approx 0.9mΩ	
Operating Temp. Range	Discharge	-15~50°C (5~122°F)
	Charge	0~40°C (32~104°F)
	Storage	-15~40°C (5~104°F)
Nominal Operating Temp. Range	25±3°C (77±5°F)	
Cycle Use	Initial Charging Current less than 90.0A. Voltage 2.4V~2.5V at 25°C(77°F)Temp. Coefficient -5mV/°C	
	Standby Use No limit on Initial Charging Current Voltage 2.25V~2.3V at 25°C(77°F)Temp. Coefficient -3mV/°C	
Capacity affected by Temperature	40°C (104°F)	103%
	25°C (77°F)	100%
	0°C (32°F)	86%
Self Discharge	Leoch LPS series batteries may be stored for up to 6 months at 25°C(77°F) and then a freshening charge is required. For higher temperatures the time interval will be shorter.	



Applications

- ◆ Green energy systems
- ◆ Communication systems

Leoch battery is green battery, focus on the Environmental protection and Ecological protection, which well connect human being and environment into harmony. Continuous power supply for people, and being benign cycle back to the green environment.



Constant Current Discharge (Amperes) at 25 °C (77°F)

F.V/Time	30min	45min	1h	2h	3h	4h	5h	8h	10h	20h	48h	100h
1.85V/cell	220.2	174.7	145.0	90.5	70.0	57.6	49.1	35.0	29.0	15.5	6.87	3.38
1.80V/cell	236.2	183.8	154.1	95.6	73.3	60.2	51.1	36.0	30.0	16.1	6.98	3.45
1.75V/cell	250.2	193.3	160.8	99.2	75.8	62.3	52.7	36.7	30.5	16.1	7.09	3.48
1.70V/cell	262.5	200.6	166.4	102.2	77.8	63.6	53.6	37.3	30.8	16.3	7.18	3.53
1.65V/cell	275.4	209.3	172.3	104.6	79.7	65.0	54.8	37.8	31.2	16.6	7.27	3.57
1.60V/cell	284.7	214.8	176.4	106.8	81.1	65.9	55.6	38.3	31.7	16.7	7.35	3.61

Constant Power Discharge (Watts) at 25 °C (77°F)

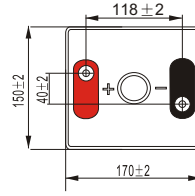
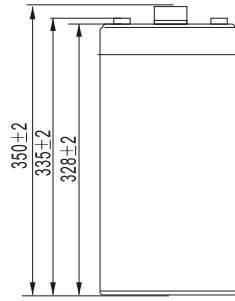
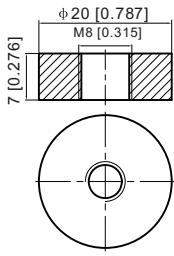
F.V/Time	30min	45min	1h	2h	3h	4h	5h	8h	10h	20h	48h	100h
1.85V/cell	420.8	335.9	280.5	175.9	136.8	113.1	96.7	69.4	57.8	30.9	13.7	6.75
1.80V/cell	447.8	351.1	296.3	185.0	142.6	117.7	100.3	71.3	59.6	31.9	13.9	6.88
1.75V/cell	470.6	367.0	307.9	191.2	147.1	121.3	103.1	72.5	60.4	32.0	14.1	6.94
1.70V/cell	489.7	378.2	317.0	196.1	150.4	123.4	104.5	73.6	61.0	32.4	14.2	7.02
1.65V/cell	509.8	392.4	326.4	199.9	153.4	125.7	106.4	74.4	61.8	32.8	14.4	7.09
1.60V/cell	521.9	399.1	331.8	202.9	155.2	126.9	107.5	75.2	62.5	33.1	14.5	7.15



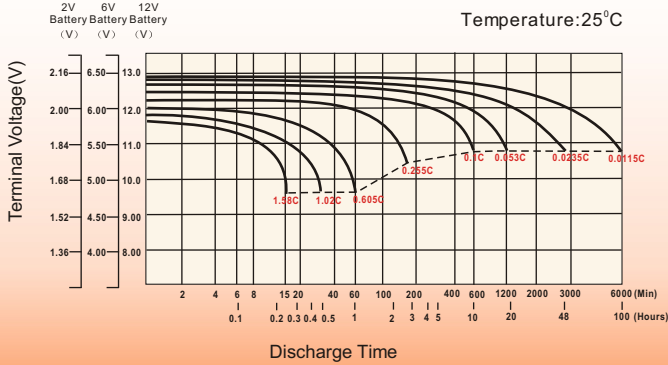
Dimensions

T11 Terminal

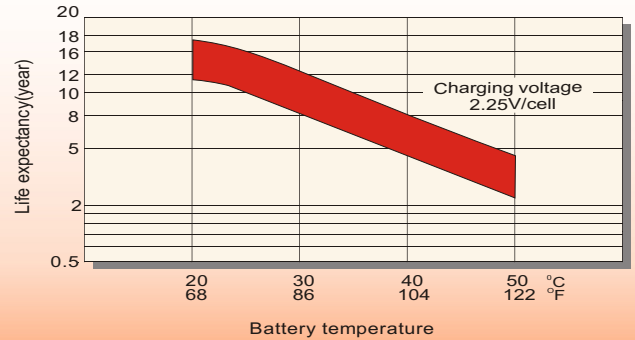
Unit: mm [inches]



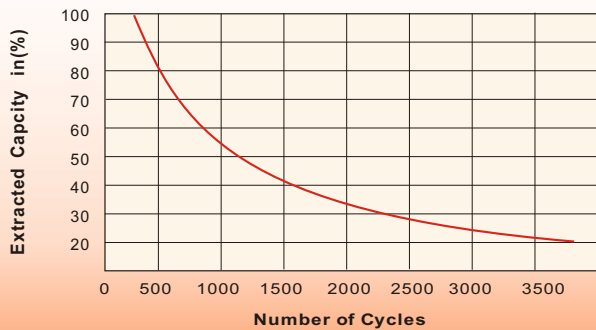
Discharge Characteristics



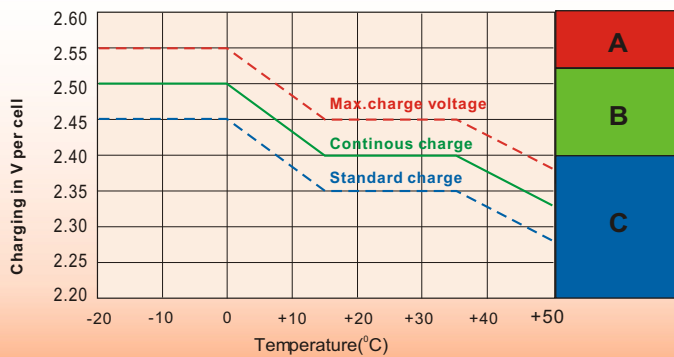
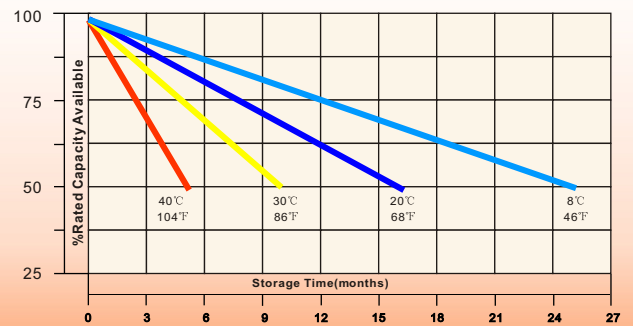
Effect of Temperature on Long Term Float Life



Cycle Service Life



Self-Discharge at Different Temperatures



Charge Mode

- A** With switch regulator (two-step controller) charge on curve max.charge voltage for max.2 hrs/day then switch over to continous charge
- B** Standard charge without switching
- C** Boost charge (Equalizing charge with external generator) charge on curve continous charge for max. 5 hrs/month, then switch over to curve Standard charge

Sales Office

China sales office:
 Add:5th Floor,Xinbaohui Bldg.,Nanhai Blvd.,
 Nanshan,Shenzhen, China. 518052
 Tel:+ 86-755-86036060 (100 lines)
 Fax: +86-755-26067269
 E-mail:export@leoch.com
 Http://www.leoch.com

HongKong sales office:
 Add: Workshop C, 33/F, TML Tower,
 No. 3 Hoi Shing Road, Tsuen Wan,
 New Territories, Hong Kong
 Tel: +852 35786666
 Fax: +852 21170016
 E-mail: sales.hk@leoch.com

Singapore sales office:
 Add: No. 1 Tech Park Crescent,
 Singapore 638131
 Tel: +65 68416629
 Fax: +65 68443210
 Email: sales.sg@leoch.com

North America sales office:
 Add: 19751 Descartes, Unit A,
 Foothill Ranch, CA 92610, USA
 Tel: 949-588-5853
 Fax: 949-588-5966
 E-mail: sales@leoch.us
 Http://www.leoch.com

Europe sales office:
 Add: 9B Wheatstone Court, Waterwells
 Business Park, Gloucester, GL2-2AQ,
 UK United Kingdom
 Tel: +44(0) 1452 729428 / 1452 729696
 Fax: +44 (0)1452-690125
 E-mail: Sales.Europe@leoch.com