

# LPGS SERIES - TRUE Hybrid GEL Battery

## LPGS12-65(12V65AH)

### Specification

Nominal Voltage	12V	
Nominal Capacity(10HR)	65.0AH	
Dimension	Length	325±3mm (12.8 inches)
	Width	167±2mm (6.57 inches)
	Container Height	174±2mm (6.85 inches)
	Total Height (with Terminal)	174±2mm (6.85 inches)
Approx Weight	Approx 21.4 kg (47.2lbs)	
Terminal	T6	
Container Material	ABS	
Rated Capacity	67.0 AH/3.35A	(20hr, 1.80V/cell, 25°C/77°F)
	65.0 AH/6.50A	(10hr, 1.80V/cell, 25°C/77°F)
	55.5 AH/11.1A	(5hr, 1.75V/cell, 25°C/77°F)
	48.0 AH/16.0A	(3hr, 1.75V/cell, 25°C/77°F)
	38.8 AH/38.8A	(1hr, 1.60V/cell, 25°C/77°F)
Max. Discharge Current	780A (5s)	
Internal Resistance	Approx 7.5mΩ	
Operating Temp. Range	Discharge	-20~55°C (-4~131°F)
	Charge	0~40°C (32~104°F)
	Storage	-20~50°C (-4~122°F)
Nominal Operating Temp. Range	25±3°C (77±5°F)	
Cycle Use	Initial Charging Current less than 16.3 A. Voltage	
	14.4V~15.0V at 25°C(77°F)Temp. Coefficient -30mV/°C	
Standby Use	No limit on Initial Charging Current Voltage	
	13.5V~13.8V at 25°C(77°F)Temp. Coefficient -20mV/°C	
Capacity affected by Temperature	40°C (104°F)	103%
	25°C (77°F)	100%
	0°C (32°F)	86%
Self Discharge	Leoch LPGS series batteries may be stored for up to 9 months at 25°C(77°F) and then a freshening charge is required. For higher temperatures the time interval will be shorter.	



### Applications

- ◆ All purpose
- ◆ Uninterruptable Power Supply (UPS)
- ◆ Electric Power System (EPS)
- ◆ Emergency backup power supply
- ◆ Emergency light
- ◆ Railway signal
- ◆ Aircraft signal
- ◆ Alarm and security system
- ◆ Electronic apparatus and equipment
- ◆ Communication power supply
- ◆ DC power supply
- ◆ Auto control system

### Constant Current Discharge (Amperes) at 25 °C (77°F)

F.V/Time	5min	10min	15min	20min	30min	45min	1h	2h	3h	4h	5h	6h	8h	10h	20h
1.85V/cell	104.8	82.4	70.1	58.6	46.3	35.2	29.1	18.5	14.4	11.8	10.0	8.74	7.12	6.03	3.25
1.80V/cell	138.6	103.7	83.4	68.3	53.3	39.9	32.4	20.1	15.4	12.6	10.8	9.38	7.59	6.50	3.35
1.75V/cell	159.5	116.3	93.0	74.9	56.8	42.2	34.2	21.1	16.0	13.0	11.1	9.64	7.72	6.57	3.38
1.70V/cell	177.7	128.3	100.5	79.7	59.9	44.3	35.7	22.1	16.5	13.4	11.3	9.85	7.82	6.60	3.45
1.65V/cell	194.1	137.1	105.8	83.8	62.8	45.7	37.0	22.7	17.2	13.8	11.6	10.1	7.95	6.66	3.48
1.60V/cell	215.8	150.1	114.1	90.0	66.7	48.3	38.8	23.5	17.8	14.1	11.8	10.3	8.04	6.77	3.51

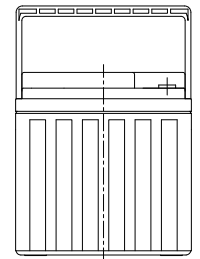
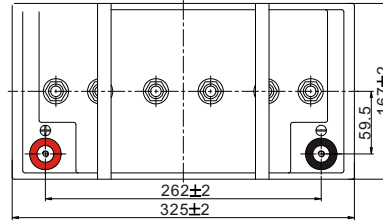
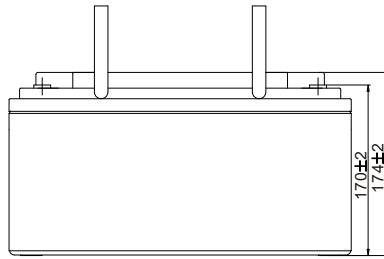
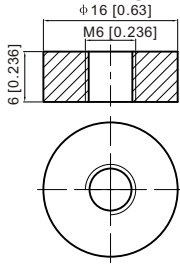
### Constant Power Discharge (Watts/cell) at 25 °C (77°F)

F.V/Time	5min	10min	15min	20min	30min	45min	1h	2h	3h	4h	5h	6h	8h	10h	20h
1.85V/cell	193.1	153.4	131.7	111.3	88.7	67.9	56.4	36.0	28.1	23.2	19.7	17.3	14.1	12.0	6.46
1.80V/cell	252.9	191.0	154.9	127.9	100.9	76.5	62.4	39.0	30.0	24.6	21.1	18.4	15.0	12.9	6.65
1.75V/cell	284.6	210.6	170.4	138.9	106.6	80.2	65.7	40.7	31.0	25.3	21.6	18.9	15.2	13.0	6.70
1.70V/cell	307.8	226.6	181.2	146.4	111.6	83.8	68.3	42.5	32.0	26.0	22.1	19.3	15.4	13.1	6.83
1.65V/cell	330.7	239.5	189.0	152.6	115.8	85.6	70.2	43.5	33.1	26.7	22.5	19.6	15.6	13.2	6.88
1.60V/cell	359.2	256.1	200.4	162.0	122.1	89.9	73.2	44.8	34.1	27.2	22.9	20.0	15.8	13.4	6.94

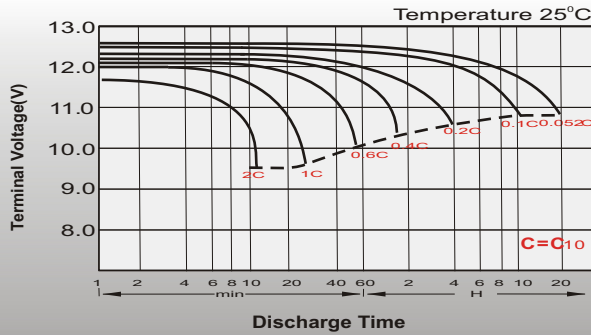
# Dimensions

## T6 Terminal

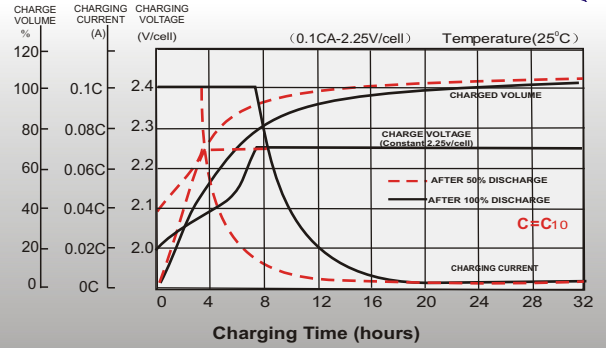
Unit: mm [inches]



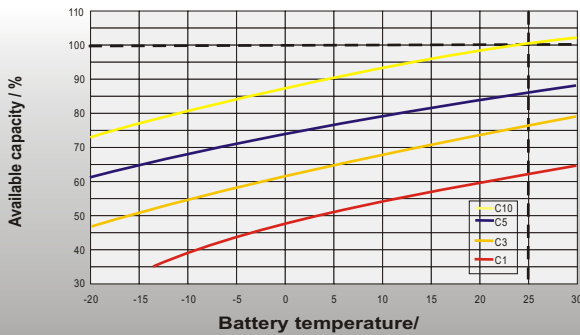
## Discharge Characteristics



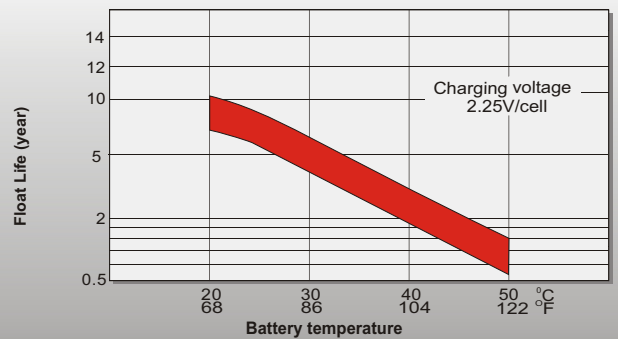
## Float Charging Characteristics



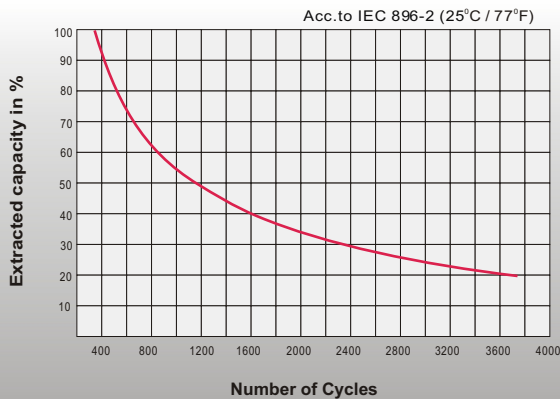
## Temperature Effects in Relation to Battery Capacity



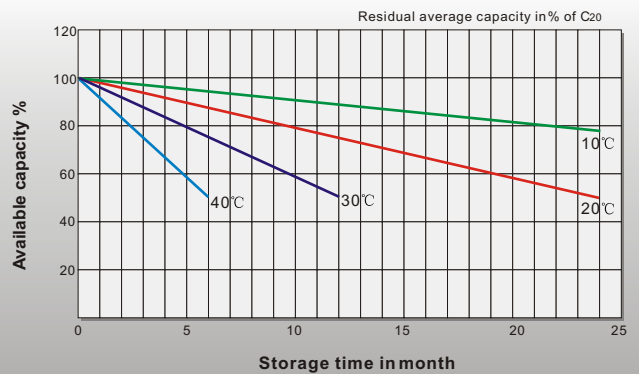
## Effect of Temperature on Long Term Float Life



## Cycle Life in Relation to Depth of Discharge



## General Relation of Capacity VS. Storage Time



## Sales Office

### China sales office:

Add: 5th Floor, Xinbaohui Bldg., Nanshai Blvd.,  
Nanshan, Shenzhen, China. 518052  
Tel: +86-755-86036060 (100 lines)  
Fax: +86-755-26067269  
E-mail: export@leoch.com  
Http://www.leoch.com

### HongKong sales office:

Add: Workshop C, 33/F, TML Tower,  
No. 3 Hoi Shing Road, Tsuen Wan,  
New Territories, Hong Kong  
Tel: +852 35786666  
Fax: +852 21170016  
E-mail: sales.hk@leoch.com

### Singapore sales office:

Add: No. 1 Tech Park Crescent,  
Singapore 638131  
Tel: +65 68416629  
Fax: +65 68443210  
Email: sales.sg@leoch.com

### North America sales office:

Add: 19751 Descartes, Unit A,  
Foothill Ranch, CA 92610, USA  
Tel: 949-588-5853  
Fax: 949-588-5966  
E-mail: sales@leoch.us  
Http://www.leoch.com

### Europe sales office:

Add: 9B Wheatstone Court, Waterwells  
Business Park, Gloucester, GL2-2AQ,  
UK United Kingdom  
Tel: +44(0) 1452 729428 / 1452 729696  
Fax: +44 (0)1452-690125  
E-mail: Sales.Europe@leoch.com