

# LPGS SERIES-TRUE Hybrid GEL Battery

## LPGS2-100 (2V100AH)

### Specification

Nominal Voltage	2V	
Nominal Capacity(10HR)	100.0AH	
Dimensions	Length	170±2mm (6.69 inches)
	Width	72±2mm (2.83 inches)
	Container Height	205±3mm (8.07 inches)
	Total Height (with Terminal)	214±3mm (8.43inches)
Approx Weight	Approx 5.8kg (12.79lbs)	
Terminal	T6	
Container Material	ABS	
Rated Capacity	104.0 AH/5.2A	(20hr, 1.80V/cell, 25°C/77°F)
	100.0 AH/10.0A	(10hr, 1.80V/cell, 25°C/77°F)
	86.0 AH/17.2A	(5hr, 1.75V/cell, 25°C/77°F)
	75.6 AH/25.2A	(3hr, 1.75V/cell, 25°C/77°F)
	54.0 AH/54.0A	(1hr, 1.60V/cell, 25°C/77°F)
Max. Discharge Current	800A (5s)	
Internal Resistance	Approx 1.4mΩ	
Operating Temp. Range	Discharge	-15~50°C (5~122°F)
	Charge	0~40°C (32~104°F)
	Storage	-15~40°C (5~104°F)
Nominal Operating Temp. Range	25±3°C (77±5°F)	
Cycle Use	Initial Charging Current less than 25.0A. Voltage 2.4V~2.5V at 25°C(77°F)Temp. Coefficient -5mV/°C	
	Standby Use No limit on Initial Charging Current Voltage 2.25V~2.3V at 25°C(77°F)Temp. Coefficient -3mV/°C	
Capacity affected by Temperature	40°C (104°F)	103%
	25°C (77°F)	100%
	0°C (32°F)	86%
Self Discharge	LPGS series batteries may be stored for up to 6 months at 25°C(77°F) and then a freshening charge is required. For higher temperatures the time interval will be shorter.	



### Applications

- ◆ Tele-communication central station (wired or cellular)
- ◆ Power system communication, military communication, etc.
- ◆ Network communication including: data transmission, television signal transmission, etc.
- ◆ Uninterruptable Power System (UPS- for Telecom)



### Constant Current Discharge (Amperes) at 25 °C (77°F)

F.V(Time)	10min	15min	20min	30min	45min	1h	2h	3h	4h	5h	6h	8h	10h	20h
1.85V/cell	113.4	100.0	90.0	74.4	59.0	47.7	29.7	23.9	18.9	16.2	13.9	11.2	9.5	5.1
1.80V/cell	134.1	113.6	100.2	79.9	62.1	50.1	31.3	25.1	19.7	17.0	14.5	11.6	10.0	5.2
1.75V/cell	151.2	124.8	108.0	84.6	65.3	50.4	32.6	25.2	20.4	17.2	14.9	11.8	10.1	5.3
1.70V/cell	162.3	133.2	115.5	88.8	67.4	50.7	33.6	25.5	20.8	17.3	15.1	12.0	10.2	5.3
1.67V/cell	168.3	136.8	115.5	90.9	69.3	52.1	34.1	25.6	21.0	17.4	15.2	12.1	10.2	5.3
1.60V/cell	181.2	144.6	123.5	94.7	71.7	54.0	35.0	25.9	21.4	17.7	15.5	12.3	10.4	5.4

### Constant Power Discharge (Watts) at 25 °C (77°F)

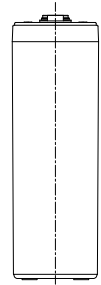
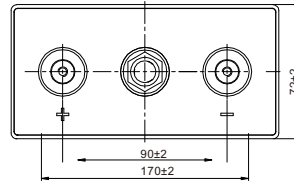
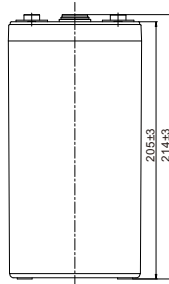
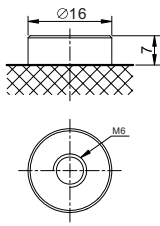
F.V(Time)	10min	15min	20min	30min	45min	1h	2h	3h	4h	5h	6h	8h	10h	20h
1.85V/cell	213.2	189.2	171.1	142.3	113.5	92.2	57.7	46.5	36.9	31.9	27.3	22.1	18.9	10.1
1.80V/cell	248.0	211.9	188.2	151.4	118.5	96.1	60.5	48.5	38.4	33.3	28.5	22.9	19.8	10.3
1.75V/cell	275.3	229.5	200.5	158.8	123.7	96.5	62.8	48.8	39.6	33.4	29.1	23.3	19.9	10.4
1.70V/cell	291.1	242.2	212.4	165.3	127.0	96.7	64.4	49.0	40.3	33.5	29.5	23.6	20.1	10.5
1.67V/cell	298.7	246.4	210.6	167.9	129.7	98.7	65.1	49.1	40.6	33.7	29.7	23.8	20.2	10.6
1.60V/cell	313.9	255.3	222.1	173.2	133.1	101.6	66.4	49.6	41.2	34.1	30.1	24.0	20.5	10.7

Specifications subject to change without notice.

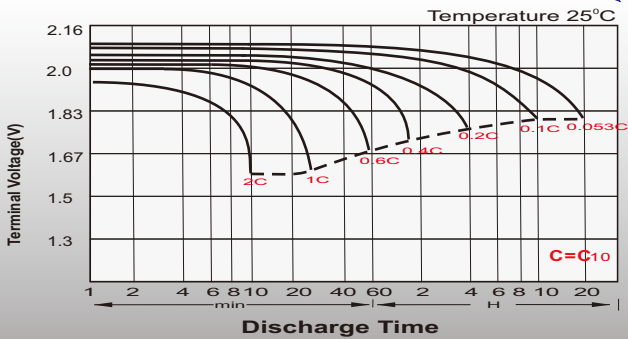
# Dimensions

## T6 Terminal

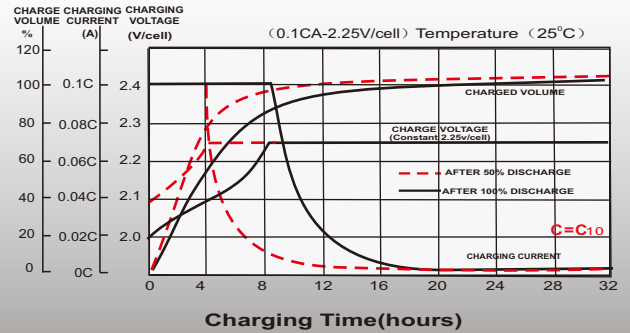
Unit: mm



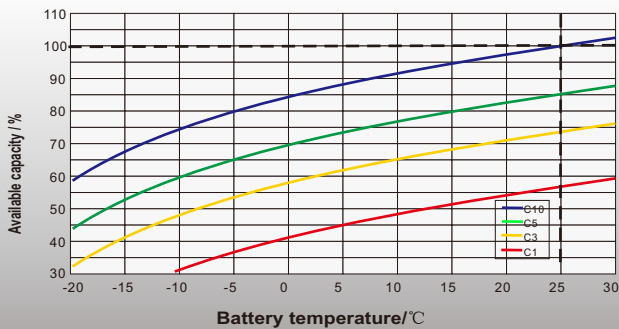
## Discharge Characteristics



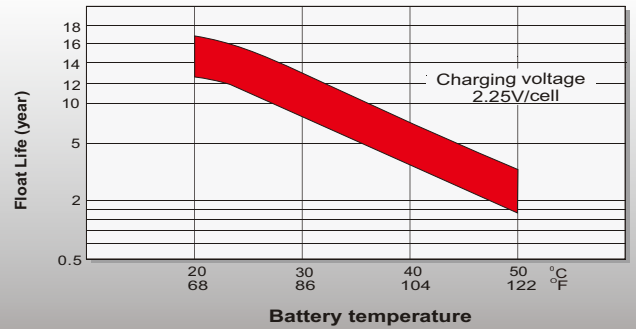
## Float Charging Characteristics



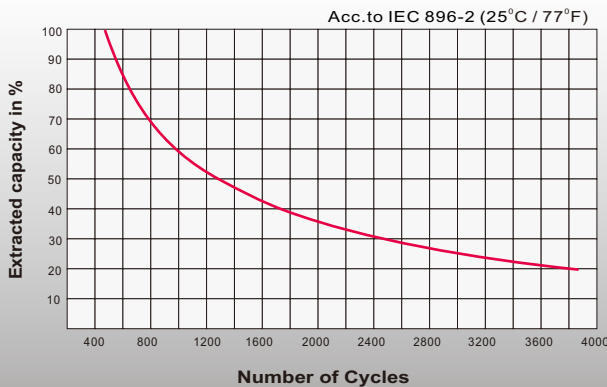
## Temperature Effects in Relation to Battery Capacity



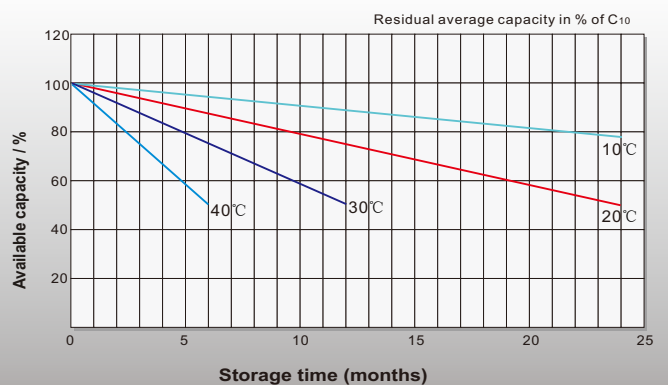
## Effect of Temperature on Long Term Float Life



## Cycle Life in Relation to Depth of Discharge



## General Relation of Capacity VS. Storage Time



## Sales Office

### China sales office:

5th Floor, Xinbaohui Bldg., Nanhai Blvd.,  
Nanshan, Shenzhen, China. 518052  
Tel: +86-755-86036060 (100 lines)  
Fax: +86-755-26067269  
E-mail: export@leoch.com  
Http://www.leoch.com

### HongKong sales office:

Workshop C, 33/F, TML Tower,  
No. 3 Hoi Shing Road, Tsuen Wan,  
New Territories, Hong Kong  
Tel: +852 35786666  
Fax: +852 21170016  
E-mail: sales.hk@leoch.com

### Singapore sales office:

No. 1 Tech Park Crescent,  
Singapore 638131  
Tel: +65 68636078  
Fax: +65 68636079  
Email sales.sg@leoch.com  
Http://www.leoch.com

### North America sales office:

19751 Descartes, Unit A,  
Foothill Ranch, CA 92610, USA  
Tel: 949-588-5853  
Fax: 949-588-5966  
E-mail: sales@leoch.us  
Http://www.leoch.us

### Europe sales office:

9B Wheatstone Court. Waterwells  
Business Park, Gloucester, GL2-2AQ,  
UK United Kingdom  
Tel: +44(0) 1452 729428 / 1452 729696  
Fax: +44 (0)1452-690125  
E-mail: Sales.Europe@leoch.com