

LPGS SERIES-TRUE Hybrid GEL Battery

LPGS2-800 (2V800AH)

Specification

Nominal Voltage	2V	
Nominal Capacity(10HR)	800.0AH	
Dimension	Length	410±3mm (16.14 inches)
	Width	175±2mm (6.89 inches)
	Container Height	330±3mm (12.99 inches)
	Total Height (with Terminal)	340±3mm (13.39 inches)
Approx Weight	Approx 50.7 kg (111.8lbs)	
Terminal	T11	
Container Material	ABS	
Rated Capacity	830.0 AH/41.50A	(20hr, 1.80V/cell, 25°C/77°F)
	800.0 AH/80.00A	(10hr, 1.75V/cell, 25°C/77°F)
	686.0 A H/137.2A	(5hr, 1.75V/cell, 25°C/77°F)
	605.1 AH/201.7A	(3hr, 1.75V/cell, 25°C/77°F)
	432.1 AH/432.1A	(1hr, 1.67V/cell, 25°C/77°F)
Max. Discharge Current	5600A (5s)	
Internal Resistance	Approx 0.6mΩ	
Operating Temp. Range	Discharge	-20~55°C (-4~131°F)
	Charge	0~40°C (32~104°F)
	Storage	-20~50°C (-4~122°F)
Nominal Operating Temp. Range	25±3°C (77±5°F)	
Cycle Use	Initial Charging Current less than 200.0A. Voltage	
	2.4V~2.5V at 25°C(77°F)Temp. Coefficient -5mV/°C	
Standby Use	No limit on Initial Charging Current Voltage	
	2.25V~2.3V at 25°C(77°F)Temp. Coefficient -3mV/°C	
Capacity affected by Temperature	40°C (104°F)	103%
	25°C (77°F)	100%
	0°C (32°F)	86%
Self Discharge	LPGS series batteries may be stored for up to 6 months at 25°C(77°F) and then a freshening charge is required.	
	For higher temperatures the time interval will be shorter.	



Applications

- ◆ Telecommunications
- ◆ Solar system
- ◆ Wind power system
- ◆ Engine starting
- ◆ Wheelchair
- ◆ Floor cleaning machines
- ◆ Golf trolley
- ◆ Boats



Constant Current Discharge (Amperes) at 25 °C (77°F)

F.V(Time)	10min	15min	20min	30min	45min	1h	2h	3h	4h	5h	6h	8h	10h	20h
1.85V/cell	907.2	800.1	720.1	595.6	472.3	381.7	237.6	190.9	150.8	129.7	111.1	89.5	76.3	40.5
1.80V/cell	1072.6	908.8	801.6	639.1	496.8	400.5	250.6	200.8	157.6	136.1	116.0	92.9	80.0	41.5
1.75V/cell	1209.6	998.4	864.1	676.8	522.5	403.3	261.0	201.7	162.8	137.2	118.8	94.7	80.7	42.0
1.70V/cell	1298.5	1065.6	924.1	710.2	539.4	405.6	268.7	203.6	166.4	138.1	120.8	96.1	81.2	42.5
1.67V/cell	1346.8	1094.5	924.1	727.5	554.0	416.5	272.7	205.1	168.2	139.1	121.9	96.8	81.7	42.7
1.60V/cell	1449.9	1157.0	988.0	757.9	573.5	432.1	280.1	207.2	171.2	141.2	123.7	98.1	83.1	43.2

Constant Power Discharge (Watts) at 25 °C (77°F)

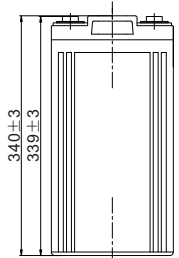
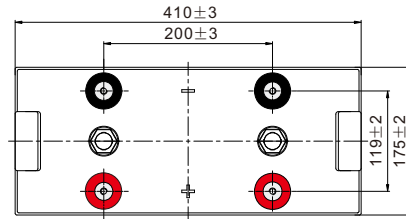
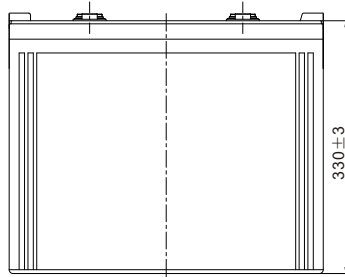
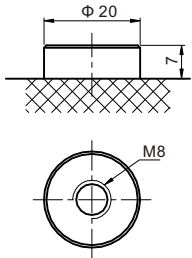
F.V(Time)	10min	15min	20min	30min	45min	1h	2h	3h	4h	5h	6h	8h	10h	20h
1.85V/cell	1705.6	1513.6	1368.4	1138.5	908.3	737.3	461.2	371.7	295.1	254.8	218.8	177.1	151.3	80.4
1.80V/cell	1984.4	1695.1	1505.6	1211.0	948.0	769.1	484.3	388.3	307.0	266.2	227.7	183.3	158.4	82.1
1.75V/cell	2202.7	1836.1	1604.3	1270.4	989.5	771.8	502.6	390.6	316.5	267.2	232.4	186.4	159.5	83.3
1.70V/cell	2328.5	1937.5	1699.2	1322.8	1016.1	773.4	515.1	391.9	322.3	268.3	236.1	189.1	160.5	84.1
1.67V/cell	2390.0	1971.4	1685.2	1343.5	1037.4	789.7	521.0	393.0	325.0	269.3	237.6	190.0	161.3	84.4
1.60V/cell	2510.9	2042.6	1776.5	1385.6	1064.6	812.5	531.5	397.0	329.3	272.5	240.4	192.1	163.7	85.3

Specifications subject to change without notice.

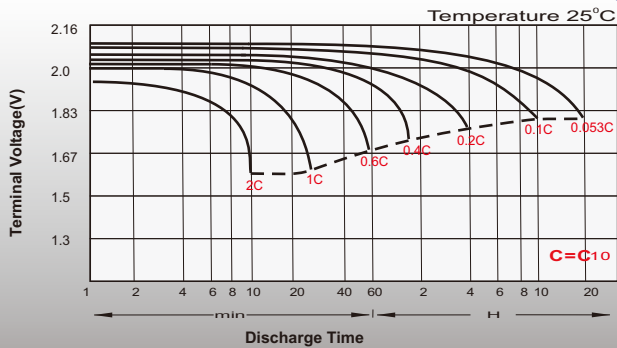
Dimensions

T11 Terminal

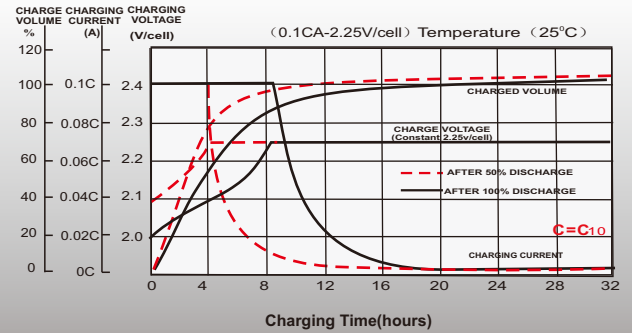
Unit: mm



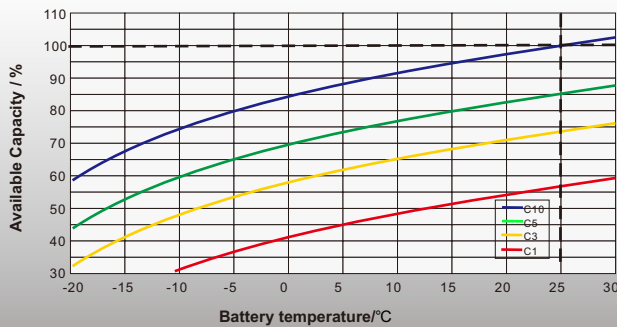
Discharge Characteristics



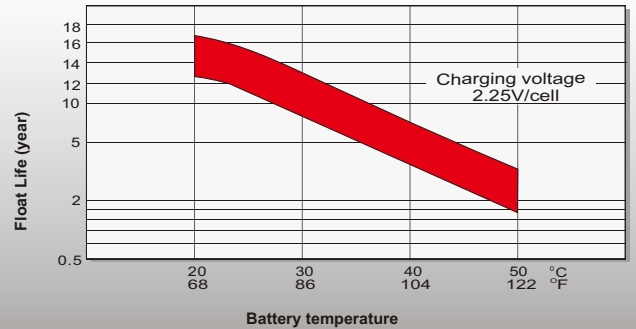
Float Charging Characteristics



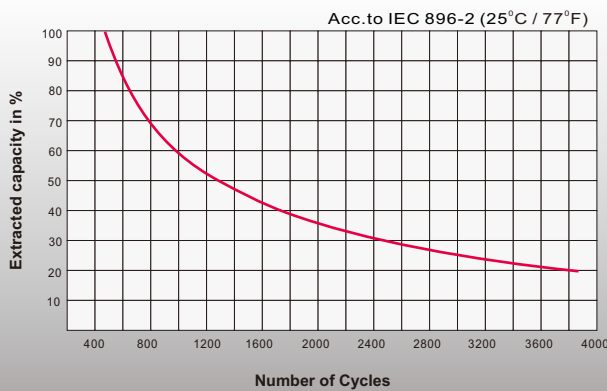
Temperature Effects in Relation to Battery Capacity



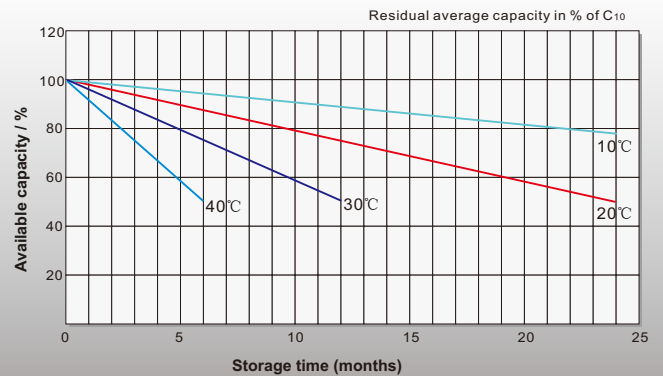
Effect of Temperature on Long Term Float Life



Cycle Life in Relation to Depth of Discharge



General Relation of Capacity VS. Storage Time



Sales Office

China sales office:

5th Floor, Xinbaohui Bldg., Nanhai Blvd.,
Nanshan, Shenzhen, China. 518052
Tel: +86-755-86036060 (100 lines)
Fax: +86-755-26067269
E-mail: export@leoch.com
Http://www.leoch.com

HongKong sales office:

Workshop C, 33/F, TML Tower,
No. 3 Hoi Shing Road, Tsuen Wan,
New Territories, Hong Kong
Tel: +852 35786666
Fax: +852 21170016
E-mail: sales.hk@leoch.com

Singapore sales office:

No. 1 Tech Park Crescent,
Singapore 638131
Tel: +65 68636078
Fax: +65 68636079
Email sales.sg@leoch.com
Http://www.leoch.com

North America sales office:

19751 Descartes, Unit A,
Foothill Ranch, CA 92610, USA
Tel: 949-588-5853
Fax: 949-588-5966
E-mail: sales@leoch.us
Http://www.leoch.us

Europe sales office:

9B Wheatstone Court. Waterwells
Business Park, Gloucester, GL2-2AQ,
UK United Kingdom
Tel: +44(0) 1452 729428 / 1452 729696
Fax: +44 (0)1452-690125
E-mail: Sales.Europe@leoch.com