

TSxxxS8T-144

xxx=545-565 in step of 5W

BIFACIAL MODULE WITH DUAL GLASS

P-Type

Positive power tolerance of 0~+3%

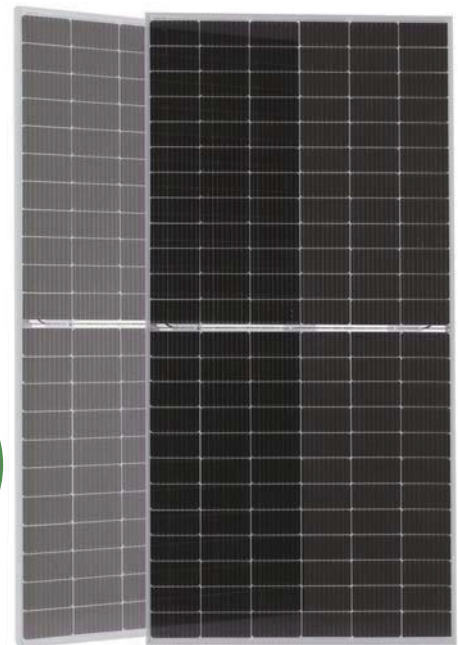
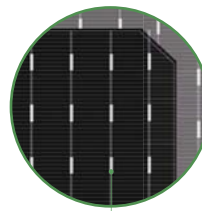
IEC 61215(2016), IEC 61730(2016)

ISO9001:2015: Quality Management System

ISO14001:2015: Environment Management System

ISO45001:2018

Occupational health and safety management systems



Bifacial Technology

Key Features



Multi Busbar Technology

Better light trapping and current collection to improve module power output and reliability.



PID Resistance

Excellent Anti-PID performance guarantee via optimized mass-production process and materials control.



Higher Power Output

Module power increases 5-25% generally, bringing significantly lower LCOE and higher IRR.



Longer Life-time Power Yield

0.45% annual power degradation and 30 year linear power warranty.

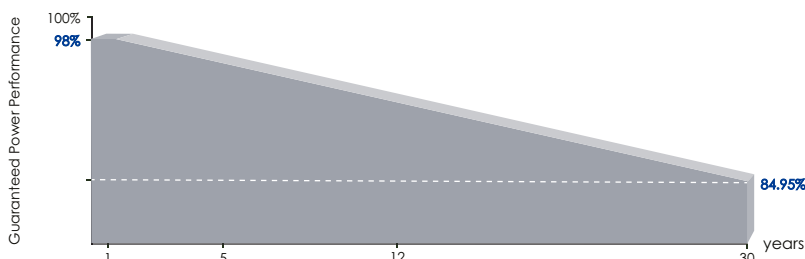


Enhanced Mechanical Load

Certified to withstand: wind load (2400 Pascal) and snow load (5400 Pascal).



LINEAR PERFORMANCE WARRANTY

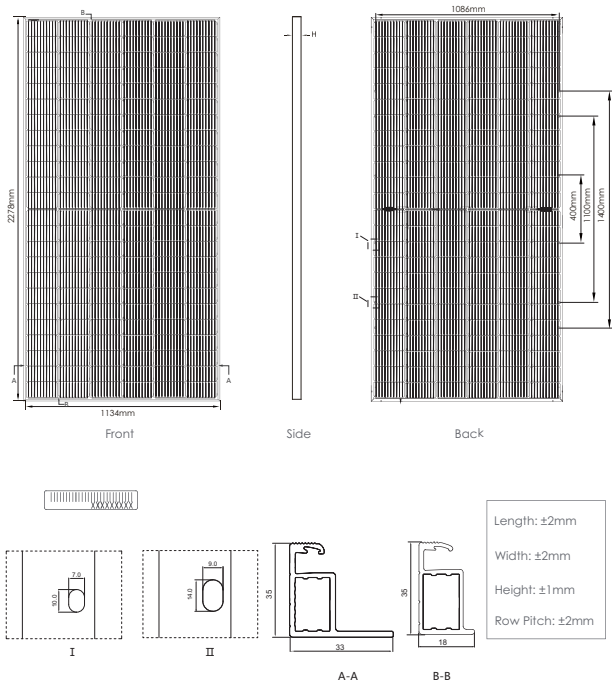


12 Year Product Warranty

30 Year Linear Power Warranty

0.45% Annual Degradation Over 30 years

Engineering Drawings

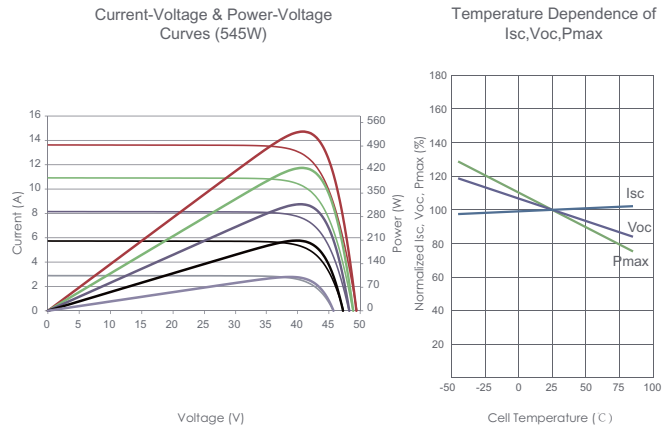


Packaging Configuration

(Two pallets = One stack)

31 pcs/pallets, 62 pcs/stack, 620 pcs/ 40'HQ Container

Electrical Performance & Temperature Dependence



Mechanical Characteristics

Cell Type	P type Mono-crystalline
No. of cells	144 (6×24)
Dimensions	2278×1134×35mm (89.69×44.65×1.38 inch)
Weight	33 kg (72.75 lbs)
Front Glass	2.0mm, Anti-Reflection Coating
Back Glass	2.0mm, Heat Strengthened Glass
Frame	Anodized Aluminium Alloy
Junction Box	IP68 Rated
Output Cables	TUV 1×4.0mm (+): 400mm , (-): 200mm or Customized Length

SPECIFICATIONS

Module Type	TS545S8T-144		TS550S8T-144		TS555S8T-144		TS560S8T-144		TS565S8T-144	
	STC	NOCT	STC	NOCT	STC	NOCT	STC	NOCT	STC	NOCT
Maximum Power (Pmax)	545Wp	405Wp	550Wp	409Wp	555Wp	413Wp	560Wp	417Wp	565Wp	420Wp
Maximum Power Voltage (Vmp)	41.32V	38.25V	41.51V	38.42V	41.70V	38.55V	41.89V	38.70V	42.08V	38.80V
Maximum Power Current (Imp)	13.19A	10.60A	13.25A	10.65A	13.31A	10.71A	13.37A	10.77A	13.43A	10.83A
Open-circuit Voltage (Voc)	49.92V	47.12V	50.11V	47.30V	50.30V	47.48V	50.49V	47.66V	50.68V	47.84V
Short-circuit Current (Isc)	13.95A	11.27A	14.01A	11.32A	14.07A	11.37A	14.13A	11.42A	14.19A	11.47A
Module Efficiency STC (%)	21.10%		21.29%		21.48%		21.68%		21.87%	
Operating Temperature(°C)	-40°C~+85°C									
Maximum system voltage	1500VDC (IEC)									
Maximum series fuse rating	30A									
Power tolerance	0~+3%									
Temperature coefficients of Pmax	-0.35%/°C									
Temperature coefficients of Voc	-0.28%/°C									
Temperature coefficients of Isc	0.048%/°C									
Nominal operating cell temperature (NOCT)	45±2°C									
Refer. Bifacial Factor	70±5%									

BIFACIAL OUTPUT-REAR SIDE POWER GAIN

		TS545S8T-144		TS550S8T-144		TS555S8T-144		TS560S8T-144		TS565S8T-144	
		5%	15%	5%	15%	5%	15%	5%	15%	5%	15%
5%	Maximum Power (Pmax)	572Wp	578Wp	583Wp	588Wp	593Wp					
	Module Efficiency STC (%)	22.14%	22.37%	22.57%	22.76%	22.96%					
15%	Maximum Power (Pmax)	627Wp	633Wp	638Wp	644Wp	650Wp					
	Module Efficiency STC (%)	24.27%	24.50%	24.70%	24.93%	25.16%					
25%	Maximum Power (Pmax)	681Wp	688Wp	694Wp	700Wp	706Wp					
	Module Efficiency STC (%)	26.36%	26.63%	26.87%	27.10%	27.33%					

*STC: Irradiance 1000W/m²

Cell Temperature 25°C

AM=1.5

NOCT: Irradiance 800W/m²

Ambient Temperature 20°C

AM=1.5

Wind Speed 1m/s