



VICERACK 2[®] is part of
the Total Roof Platform!

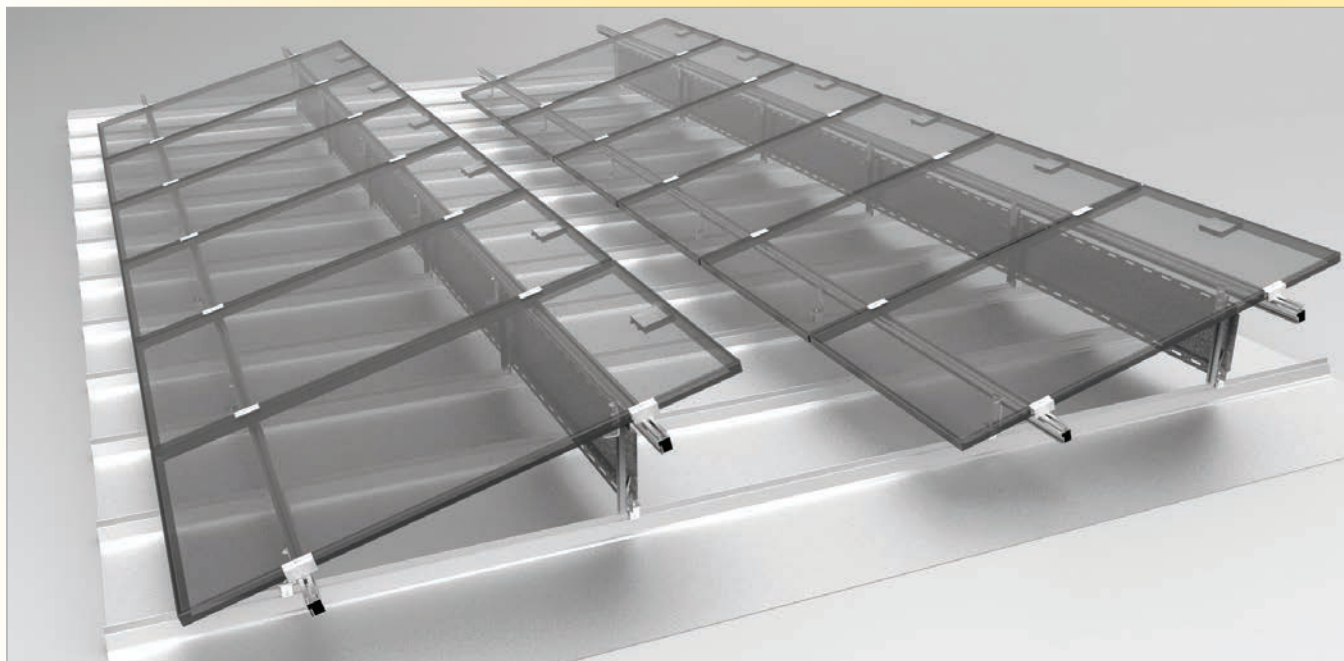


Are you optimizing your rooftop space?

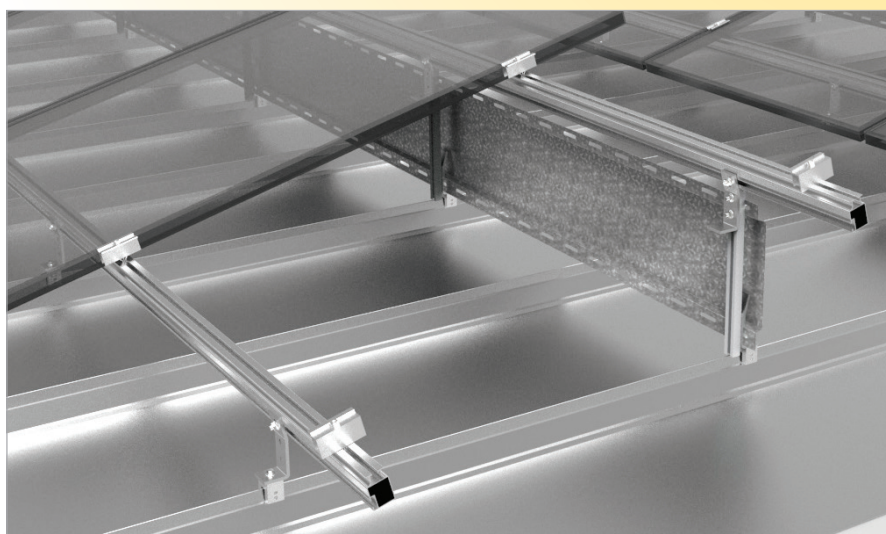
- Tilt can increase PV output by as much as 10%
- Utilize the entire roof, (South slope and North slope)
- Increased airflow under the module results in higher efficiency
- Ability to mount skewed, square or parallel to the deck seams increasing design feasibility
- The same mounting system on standing seam or exposed fastener roofs

Do you have confidence in your mounting hardware?

- Class A Fire Rating per UL 1703 for Type 1 and 2 modules
- Designs are reviewed and stamped by a 3rd Party PE
- Extensive Boundary Layer Wind Tunnel testing
- Conformance with Roofing manufacturer's specifications



The engineering experience, combined with a product offering of tilt and flush mount solutions, enables Advanced Racking to Maximize your Rooftop's PV output.



Benefits:

- Clamps modules in Green Zone
- Streamlines wire management
- Simplifies maintenance work
- Strong structural connections, peak & valley
- Integrated grounding
- Low system weight

Rear Wind Deflector:

- Optional
- Dramatically reduces wind uplift

Technical Specifications

| | |
|---|--|
| Roof Types: All metal roofs | Orientation: Portrait/Landscape |
| Roof Slope: Low, up to 2:12 | Materials: Aluminum & stainless steel |
| Tilt Angles: 5, 10, 15, per request | Warranty: 20 Year |
| Module Compatibility: All framed PV modules | System Weight: Less than 3psf including module |

For more information contact:

540-491-4091
info@advancedracking.com
www.advancedracking.com