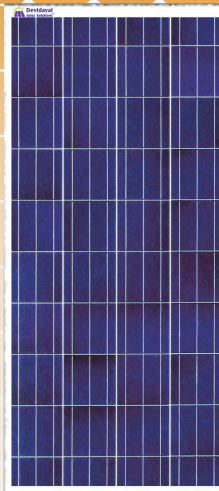




POLY 150Wp Solar Panel



DDS150M

FEATURES



Superior Module Efficiency as per International Benchmarks



Salt mist, Ammonia, Blowing Sand and Water Resistant



Power Tolerance 0/+ 5%



Sustain Heavy Wind & Rain loads



PID Free Modules with long term reliability



IP 67 rated MC4 compatible connectors



Glass with Anti Reflective Coating Improves high transmission



Excellent Performance in low light

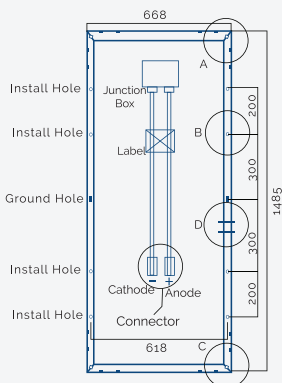
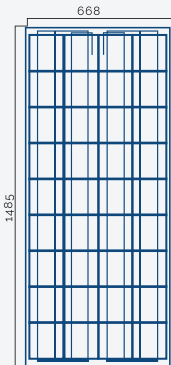


Sand and Dust Resistant

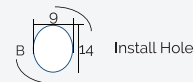


Power output warranty 10 years 90%, 25 years 80%

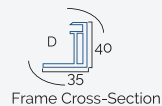
DIMENSIONS



Drainage Hole



Install Hole



Frame Cross-Section



ADDITIONAL FEATURES

- * High conversion efficiency
- * Low power tolerance of 0~+3%
- * Low degradation under light exposure
- * Passing IEC 61215 2400Pa mechanical load test

QUALITY AND SAFETY

- * 1 year warranty on product materials and processing technology
- * Power output warranty 10 years 90%, 25 years 80%
- * ISO 9001:2008(Quality Management System) certified factory
- * IEC61215,IEC61730 ,MCS CEC certified products
- TUV,CE conformity

APPLICATIONS

- * On-grid residential roof-tops
- * On-grid commercial/industrial roof-tops
- * Solar Power Plants
- * Other on-grid applications
- * Off-grid system

SPECIFICATION

Model Name	DDS150M
Peak Power(Pmax)	150.00
Maximum Power Voltage(Vmp)	18.61
Maximum Power Current(Imp)	8.10
Open Circuit Voltage(Voc)	21.19
Short Circuit Current(Isc)	8.62
Cells Efficiency(%)	17.63
Module Efficiency(%)	15.22%
Maximum System Voltage(V)	1000
Maximum Series Fuse Rating(A)	15
Power Tolerance	0~+3%
Pmax Temperature Coefficients(W/°C)	-0.450%
Voc Temperature Coefficients(V/°C)	-0.350%
Isc Temperature Coefficients(A/°C)	+0.040%
NOCT Nominal Operating Cell Temperature(°C)	47±2
Operating and Storage Temperature(°C)	-40~+85
Standard Test Condition(STC)	1.000W/.m²; AM 1.5;25+/-2°C

ADDITIONAL SPECIFICATIONS

Cell Type	Poly-Crystalline 156 x 156mm
No. of Cells	36(4 x 9)
Dimensions	1485 x 668 x 35mm
Weight	11.60Kgs
Front Glass	3.2mm high transmission, low iron, tempered glass
Frame	Anodized Aluminium Alloy
Junction Box	IP65 Rated
OutPut Cables	4.0mm² Length 90mm, MC4 connector
Quantity/Cartons	5pcs