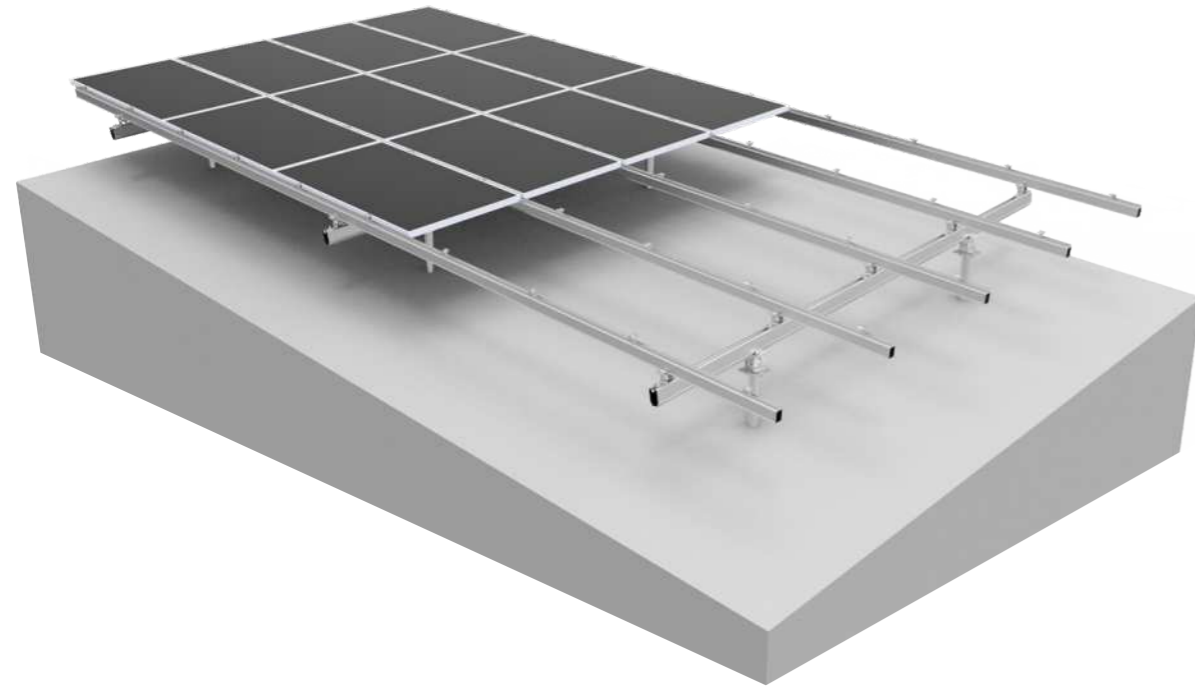


# GS-Smart Ground Mounting System Solution

## Ground Mounting System (East West Tilt+North South Tilt)



### • System Introduction

The self-developed aluminum alloy fixed mounting system, due to its high quality, durability and standardized product advantages, aluminum alloy's unique quick installation structure and flexible layout style have become the most widely used solution in the construction of PV power plants.

### • Suitable Power Plant Project

It is applicable to all power plant projects.

### • Features

- No on-site processing is required, construction is convenient, and corrosion resistance is better;
- It can adapt to the undulating terrain and adjust the north-south slope of the ground through the height difference of the piles;
- Unique rotating parts, effectively overcome the tilt of the ground.



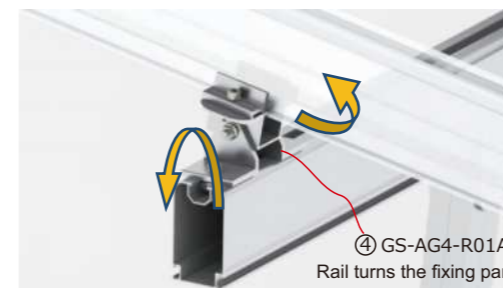
Concrete foundation

Ground screw foundation

### • Technical Information

Installation site	Ground
Angle	0-60°
Construction height	Below 9M
Material	High-strength aluminum alloy &A2-70
Color	Natural color
Surface treatment	Anodizing or electrophoresis
Maximum wind speed	<46m/s (JIS)
Maximum snow cover	<200cm (JIS)
Foundation	Concrete foundation、 Ground screw foundation
Reference standards	JIS C 8955:2017
Quality Assurance	10-year quality guarantee

### • Parts



Rotating parts: range adjustment: 0~60 degrees (depending on site conditions)



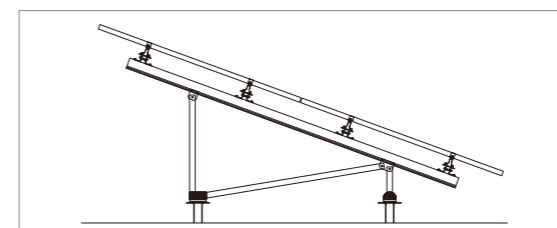
① GS-SNKY-L SNKY Rail

② GS-KIC-F Middle fixed pressure block

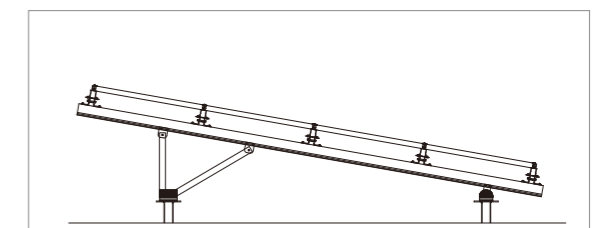
③ GS-KEC-F Side fixed pressure block

### • Structure

\* The longitudinal members and columns are pre-assembled to the greatest extent by the factory, which greatly facilitates on-site construction.



N Type: AG5+SMR



A Type: AG4+SNKY