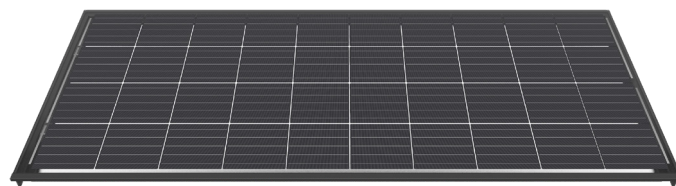


Border solar modules for M425-60-t BF GG NICER 3

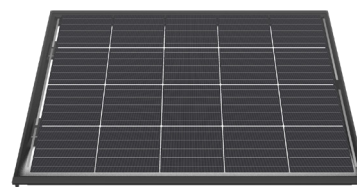
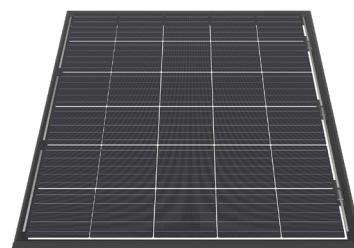
0322.1418 Swiss Premium M282-4x10-t BF GG NICER 3

Nominal power (Pmpp)	217 Wp	239 Wp	282 Wp
Nominal voltage (Umpp)	22.6 V	22.6 V	22.7 V
Nominal current (Impp)	9.60 A	10.56 A	12.49 A
Open circuit voltage (Uoc)	26.9 V	26.9 V	27.0 V
Short circuit current (Isc)	10.61 A	11.67 A	13.80 A
Number of cells (matrix)	40 (4x 10)	+10% BF ¹	+30% BF ¹
Dimensions (LxWxH) ±3.0 mm	725x1671x60 mm		
Modular dimensions (LxW)	696x1676 mm		
Weight	25 kg		



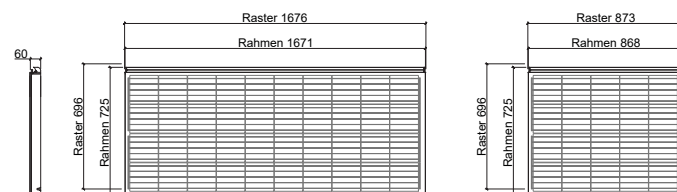
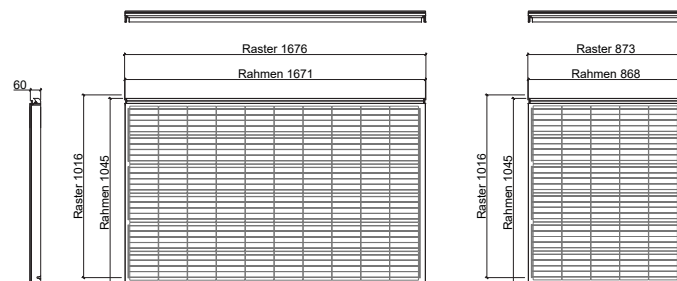
0322.1419 Swiss Premium M212-6x5-t BF GG NICER 3

Nominal power (Pmpp)	162 Wp	178 Wp	212 Wp
Nominal voltage (Umpp)	17.0 V	17.0 V	17.1 V
Nominal current (Impp)	9.60 A	10.56 A	12.49 A
Open circuit voltage (Uoc)	20.2 V	20.2 V	20.3 V
Short circuit current (Isc)	10.61 A	11.67 A	13.80 A
Number of cells (matrix)	30 (6x 5)	+10% BF ¹	+30% BF ¹
Dimensions (LxWxH) ±3.0 mm	1045x868x60 mm		
Modular dimensions (LxW)	1016x873 mm		
Weight	20 kg		



0322.1420 Swiss Premium M141-4x5-t BF GG NICER 3

Nominal power (Pmpp)	108 Wp	119 Wp	141 Wp
Nominal voltage (Umpp)	11.3 V	11.3 V	11.4 V
Nominal current (Impp)	9.60 A	10.56 A	12.49 A
Open circuit voltage (Uoc)	13.4 V	13.4 V	13.5 V
Short circuit current (Isc)	10.61 A	11.67 A	13.80 A
Number of cells (matrix)	20 (4x 5)	+10% BF ¹	+30% BF ¹
Dimensions (LxWxH) ±3.0 mm	725x868x60 mm		
Modular dimensions (LxW)	696x873 mm		
Weight	14 kg		



Customized special modules

3338.0991 Special module NICER 2/3 Cat. 1	active / complexity: low
3338.0992 Special module NICER 2/3 Cat. 2	active / complexity: medium
3338.0993 Special module NICER 2/3 Cat. 3	active / complexity: high
3338.0994 Special module NICER 2/3 Cat. 4	passive / complexity: high

Border modules are electrically compatible with the corresponding basic module (60 solar cells).
For technical reasons of production, despite utmost care, the surface properties and optical colour effect may vary from the basic module.

STC (Standard Test Conditions): irradiance 1000 W/m², cell temperature 25°C, AM 1.5
Measuring tolerances ±3 % (Pmpp); ±10 % (Umpp, Impp, Uoc, Isc)
¹With bifacial gain, depending on mounting distance and albedo of the substrate



Note: The instructions in the installation manual must be strictly complied with. Further information about approved utilization of products can be found in the installation manual or can be requested from the technical service.

E-mail: info@megasol.ch
Hotline: +41 62 919 90 90
www.megasol.ch



Megasol partner

Subject to errors and technical modifications.
© Megasol Energy Ltd | Version: 12/2019