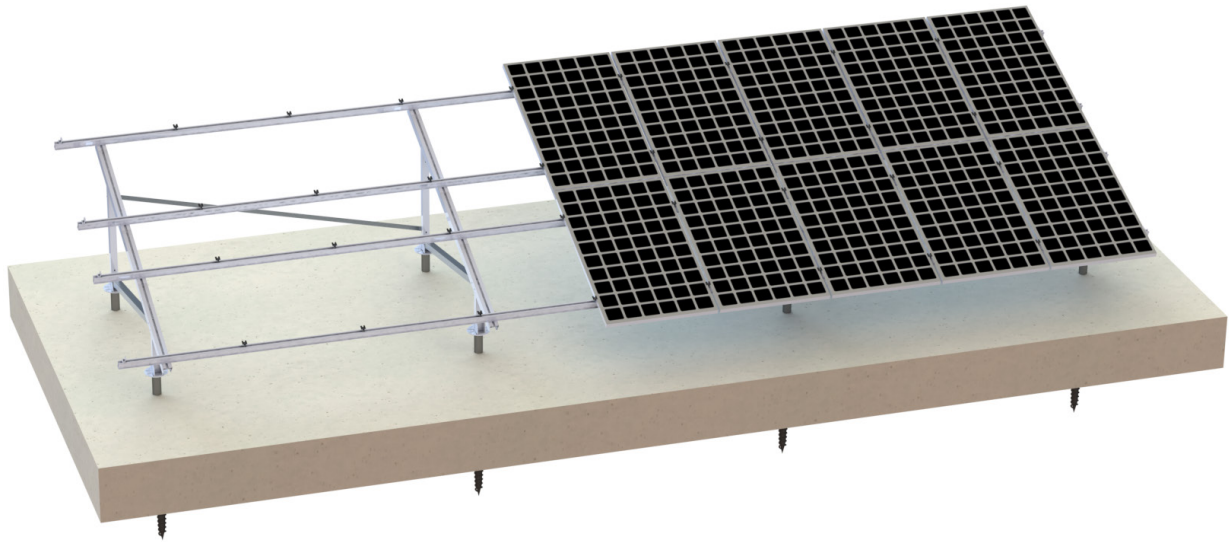


MGA 4 地面铝合金支架系统

MGA 4 Aluminum ground mounting system



技术参数

安装地点: 户外开阔地面、平屋顶
 固定方式: 螺旋地桩/混凝土
 安装角度: 5~45°
 标准风速: 35m/s
 最大风速: 88m/s
 标准积雪: 1200mm
 设计标准: JISC8955:2017,
 GB50009-2012, GB50797-2012
 支架系统材质: AL6005-T5
 紧固件材质: SUS 304

产品特性

- 1、兼容性强
- 2、超高性价比
- 3、专利系统配件设计
- 4、高强度铝合金材质
- 5、超轻量化设计
- 6、安装方便简捷

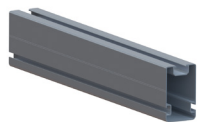
Technical specification

Installation place: Cement roof
 or flat ground
 Fixed way: Ground screw/Con-
 crete base
 Installation angle: 5° ~45°
 Standard wind: 35m/s
 Max wind: 88m/s
 Standard snow: 1200mm
 Design standard: JISC
 8955:2017, GB50009-2012,
 GB50797-2012
 Main material: AL6005-T5
 Fastener material: SUS 304

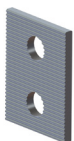
Advantage

- 1、Strong compatibility
- 2、High cost performance
- 3、Patent design
- 4、High-strength aluminum
- 5、Ultra light-weight design
- 6、Easy to install

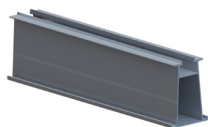
零部件
Components



纵梁
Beam



调节垫片
Adjustable gasket



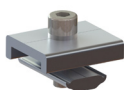
导轨65
Rail 65



连接件
Joiner



后斜拉
Rear diagonal tie



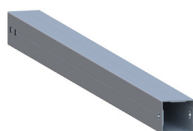
压块
Clip



基座
Foundation



中压
Mid clamp



立柱
Column

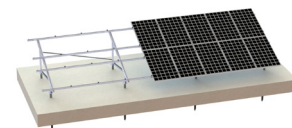


边压块
End clamp

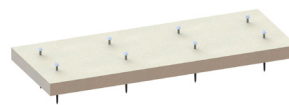
安装步骤
Installation step



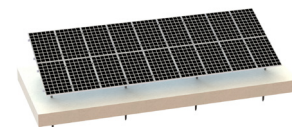
第一步 基础安装
First Install the pile



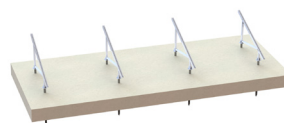
第五步 组件安装
Fifth Install the panel



第二步 底座安装
Second Install the foundation



第六步 安装完成
Sixth Complete.



第三步 立柱、纵梁安装
Third Install the column and beam



第四步 导轨安装
Fourth Install the rail