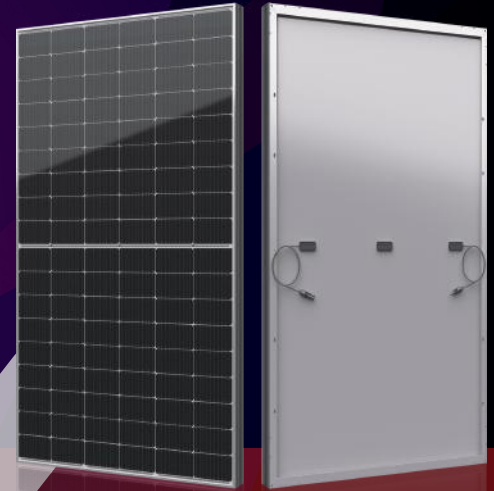


III SERIES Shine G

solar way ,shinging life







330-345W



● IVSERIES

Nabai redefined the high-efficiency module series by integrating 182mm silicon wafers with multi-busbar and half-cut cell technologies. Nabai panel combined creative technology effectively and extremely improved the module efficiency and power output.

● KEY FEATURES

-  Less mismatch to get more power
-  Less power loss by minimizing the shading impact
-  Competitive low light performance
-  3 times EL test to ensure best quality
-  Ideal choice for utility and commercial scale projects by reduced BoS and improved ROI
-  Outstanding reliability proven by PVEL for stringent environment condition:
 - Sand, acid, salt and hail stones
 - 2400 Pa wind load and 5400 Pa snow load
 - Anti-PID

● QUALITY SYSTEM

ISO9001 / ISO14001 / ISO45001

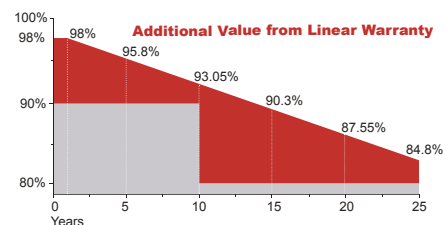
● PRODUCT CERTIFICATION



● INSURANCE

PICC

● WARRANTY



Guarantee on product material and workmanship



Linear power output warranty

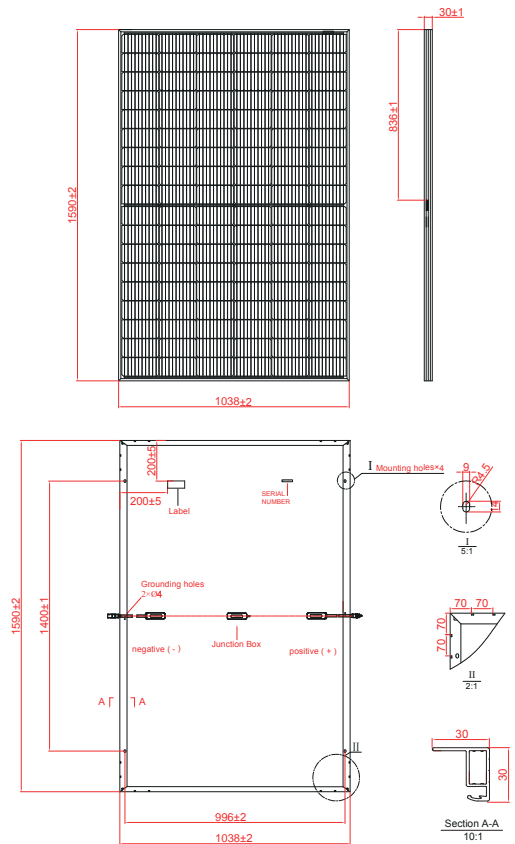
Electrical Characteristics

Module Type	NB-330-BMD		NB-335-BMD		NB-340-BMD		NB-345-BMD	
	STC	NOCT	STC	NOCT	STC	NOCT	STC	NOCT
Maximum Power at STC (Pmp)	330	248	335	251	340	255	345	258
Open Circuit Voltage (Voc)	36.61	34.22	37.16	34.72	37.37	34.81	37.58	34.95
Short Circuit Current (Isc)	11.35	9.12	11.31	9.07	11.41	9.20	11.52	9.26
Maximum Power Voltage (Vmp)	30.42	28.43	30.96	28.93	31.14	28.96	31.32	29.13
Maximum Power Current (Imp)	10.85	8.72	10.82	8.68	10.92	8.81	11.02	8.86
Module Efficiency at STC(η m)	20.00		20.30		20.60		20.90	
Power Tolerance	(0, +4.99)							
Maximum System Voltage	1000V DC							
Maximum Series Fuse Rating	25 A							

STC: Irradiance 1000 W/m² module temperature 25°C AM=1.5
Power measurement tolerance: +/-3%

Temperature Characteristics

Pmax Temperature Coefficient	-0.34 %/°C
Voc Temperature Coefficient	-0.26 %/°C
Isc Temperature Coefficient	+0.05 %/°C
Operating Temperature	-40 ~ +85 °C
Nominal Operating Cell Temperature(NOCT)	45±2 °C



Mechanical Specifications

External Dimensions	1590 x 1038 x 30 mm
Weight	18.0 kg
Solar Cells	PERC Mono (108 pcs)
Front Glass	3.2mm AR coating tempered glass, low iron
Frame	Black anodized aluminium alloy
Junction Box	IP68, 3 diodes
Output Cables	4.0mm ² , 250mm(+)/350mm(-) or Customized Length
Mechanical Load	Front side 5400Pa/ Rear side 2400Pa

Packing Configuration

	1590 x 1134 x 30 mm	
Container	20'GP	40'HQ
Pieces per Pallet	40	36
Pallets per Container	7	28
Pieces per Container	280	1008

For details, please consult NABAI

I-V Curve

