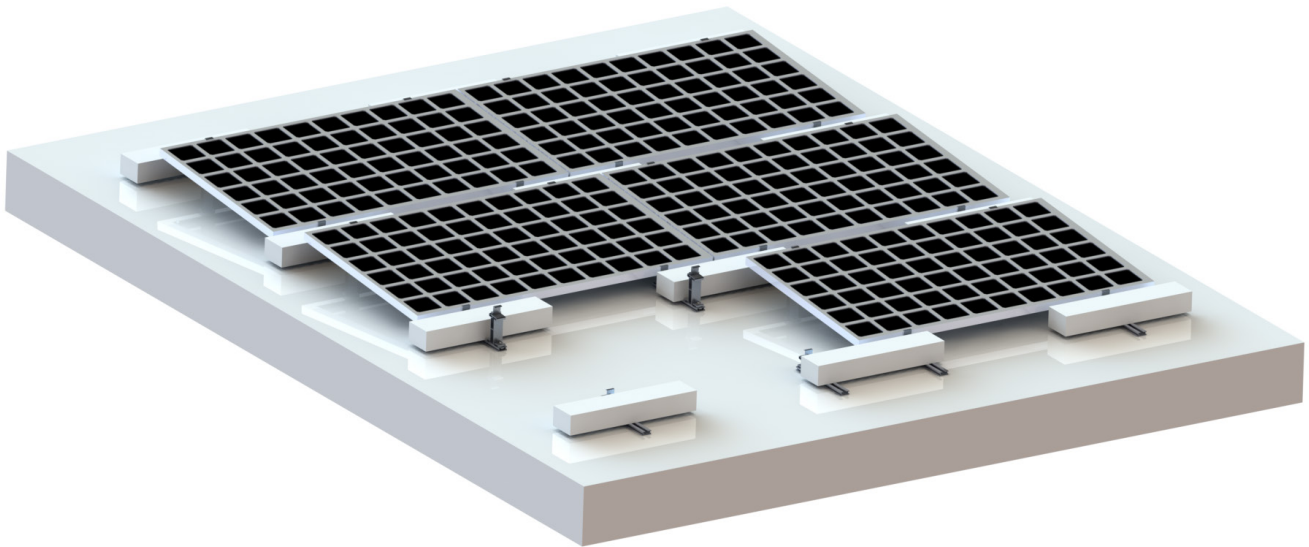


MRA 3-A4 屋顶压载铝支架系统

MRA3-A4 Concrete roof mounting system



技术参数

安装地点: 混凝土屋面
 固定方式: 混凝土基础
 安装角度: 5° / 10°
 标准风速: 35m/s
 标准积雪: 1200mm
 设计标准: JISC 8955:2017,
 GB50009-2012, GB50797-2012
 支架系统材质: AL6005-T5
 紧固件材质: SUS 304

产品特性

- 1、高强度铝合金材质
- 2、超轻量化设计
- 3、安装方便简捷
- 4、可提供5° 和10° 角度安装

Technical specification

Installation place: Cement roof
 Fixed way: Concrete base
 Installation angle: 5° / 10°
 Standard wind: 35m/s
 Standard snow: 1200mm
 Design standard: JISC
 8955:2017, GB50009-2012,
 GB50797-2012
 Main material: AL6005-T5
 Fastener material: SUS 304

Advantage

- 1、High-strength aluminum
- 2、Ultra light-weight design
- 3、Easy to install
- 4、5° and 10° installations are available

零部件-5度
Components-
5 degree

安装效果-5度
Installation effect
5 degree

零部件-10度
Components-
10 degree

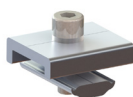
安装效果-10度
Installation effect
10 degree



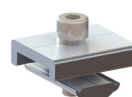
边压块
End clamp



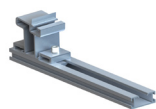
边压块
End clamp



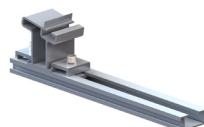
压块
Clip



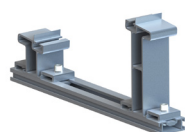
压块
Clip



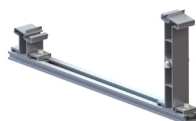
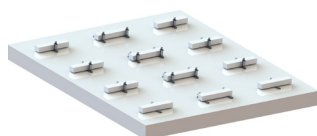
前支撑组件
Front support



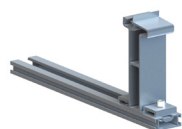
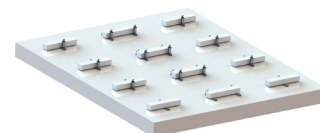
前支撑组件
Front support



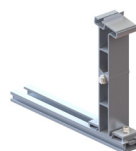
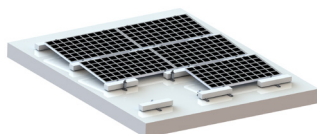
中支撑组件
Mid support



中支撑组件
Mid support



后支撑组件
Rear support



后支撑组件
Rear support

