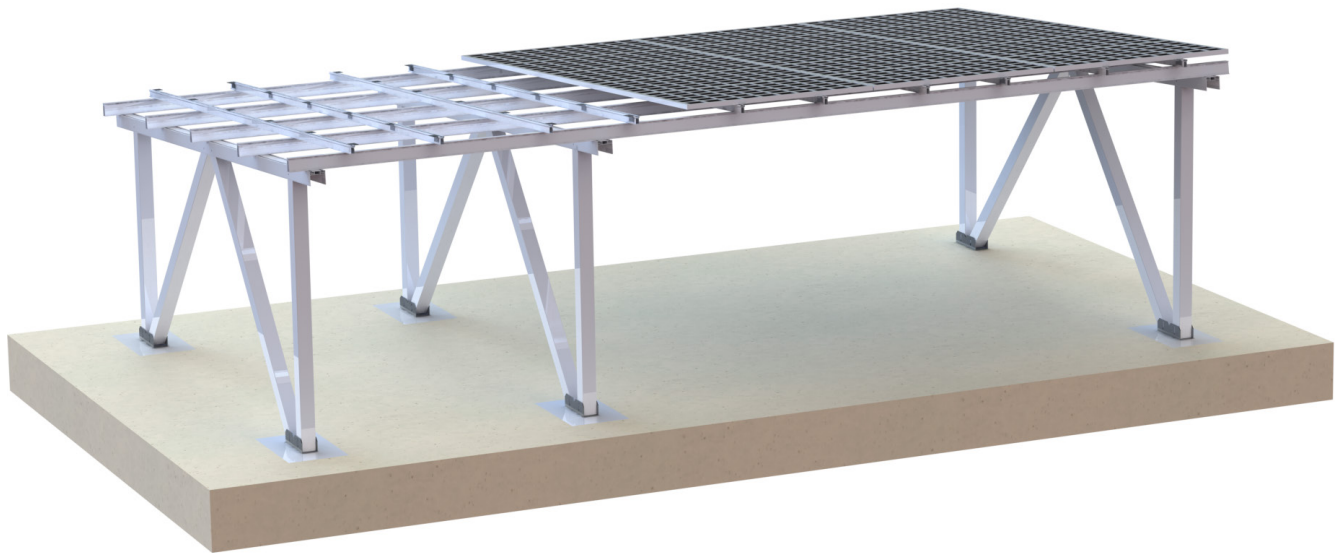


CPT 光伏车棚支架系统

CPT Aluminum carport



技术参数

安装地点: 户外开阔地面、平屋顶
 固定方式: 螺旋地桩/混凝土
 安装角度: 5~45°
 标准风速: 36m/s
 最大风速: 88m/s
 标准积雪: 800mm
 设计标准: JISC8955:2017,
 GB50009-2012, GB50797-2012
 支架系统材质: AL6005-T5
 紧固件材质: SUS 304

产品特性

- 1、适用于各种规模的光伏电站
- 2、高度预安装
- 3、高强度铝合金材质
- 4、超轻量化设计
- 5、安装方便简捷

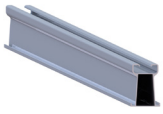
Technical specification

Installation place: Cement roof or
 flat ground
 Fixed way: Ground screw/Concrete
 base
 Installation angle: 5° ~45°
 Standard wind: 36m/s
 Max wind: 88m/s
 Standard snow: 800mm
 Design standard: JISC8955:2017,
 GB50009-2012, GB50797-2012
 Main material: AL6005-T5
 Fastener material: SUS 304

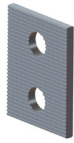
Advantage

- 1、Suit for all kinds of scale
PV power station
- 2、Pre-installed as more as possible
- 3、High-strength aluminum
- 4、Ultra light-weight design
- 5、Easy to install

零部件
Components



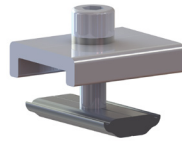
导轨
Rail



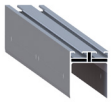
调节垫片2
Adjustable gasket 2



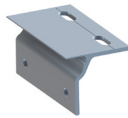
横梁
Beam



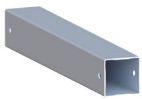
压块
Clip



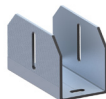
纵梁
Longitudinal beam



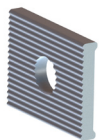
支撑件
Joiner



立柱
Column

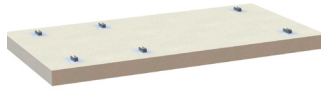


基座
Foundation



调节垫片1
Adjustable gasket 1

安装步骤
Installation step



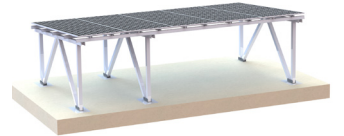
第一步 基础安装
First Install the pile



第五步 组件安装
Fifth Install the panel



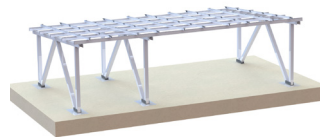
第二步 立柱安装
Second Install the column



第六步 安装完成
Sixth Complete.



第三步 纵梁安装
Third Install the beam



第四步 导轨安装
Fourth Install the rail