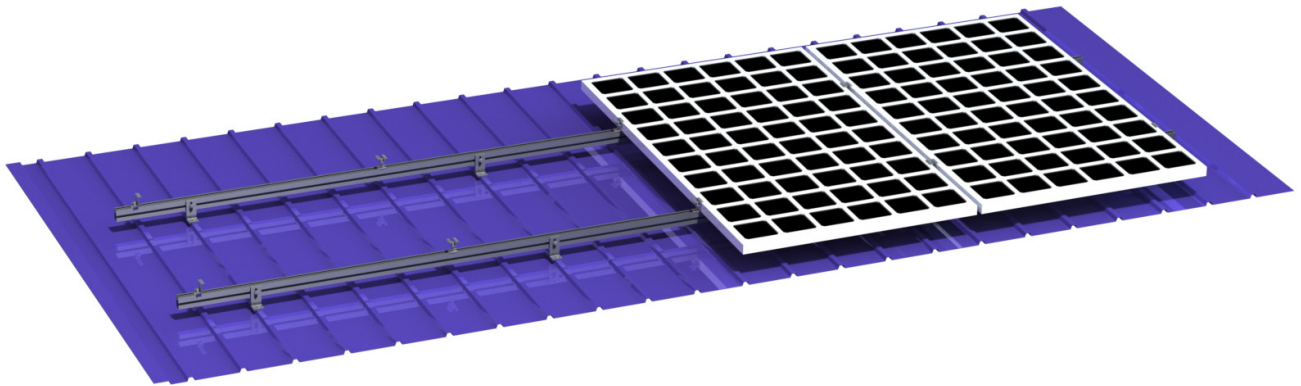


# MRA 2-TD 梯型彩钢瓦屋顶铝支架系统

## MRA 2-TD T-type tin roof mounting system



### 技术参数

安装地点: T型彩钢瓦  
固定方式: L角/T型夹具  
安装角度: 0°  
最大风速: 88m/s  
最大积雪: 800mm  
设计标准: JISC8955:2017,  
GB50009-2012, GB50797-2012  
, AS/NZS1170

支架系统材质: AL6005-T5  
紧固件材质: SUS 304

### 产品特性

- 1、高强度铝合金材质
- 2、超轻量化设计
- 3、安装方便简捷

### Technical specification

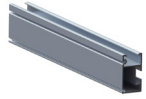
Installation place: T-type Tin roof  
Fixed way: L-feet/ T-clamp  
Installation angle: 0°  
Max wind: 88m/s  
Max snow: 800mm  
Design standard: JISC 8955:2017, GB50009-2012, GB50797-2012, AS/NZS1170

Main material: AL6005-T5  
Fastener material: SUS 304

### Advantage

- 1、High-strength aluminum
- 2、Ultra light-weight design
- 3、Easy to install

零部件  
Components



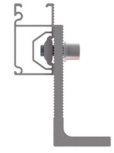
导轨  
Rail



中压块  
Mid clamp



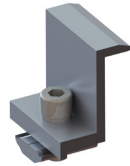
100mm L角  
100mm height L-feet



滑块螺母设计  
Slide nut design



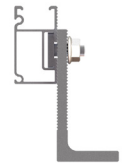
导轨连接件  
Rail joiner



边压块  
End clamp



螺杆+L角  
Hanger bolt+L-feet



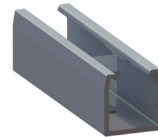
T型螺栓设计  
T-bolt design



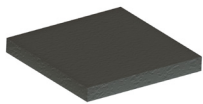
L角  
L-feet



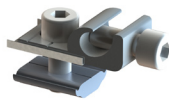
导电片  
Earthing plate



点压导轨  
Railless type



橡胶垫  
Rubber



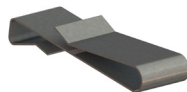
接地件  
Earthing lug



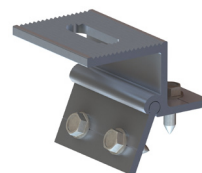
T型夹具  
T-clamp



自攻钉  
Tapping screw



线夹  
Cable clip



可调T型夹具  
Adjustable T-clamp