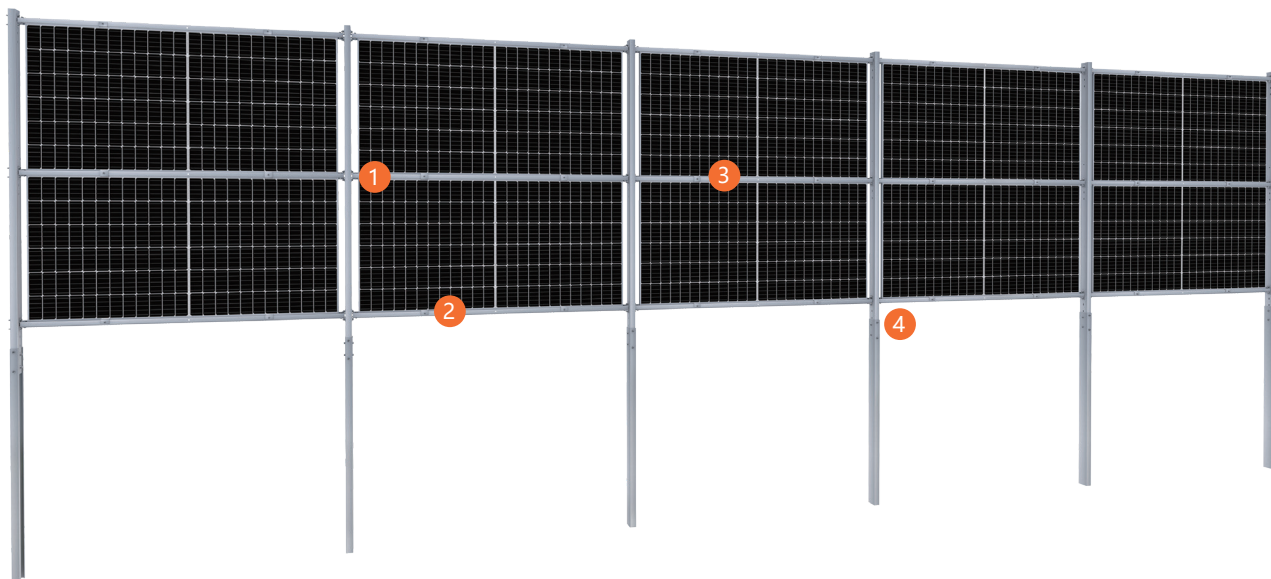


Photovoltaic Vertical Bifacial Power Generation System

Standard: JIS C 8955: 2017;
AS/NZS 1170;
DIN1055;
ASCE/SEI 7-05;
International Building Code: IBC 2009



Photovoltaic Vertical Bifacial Power Generation System



Photovoltaic vertical bifacial power generation system, through the new photovoltaic system concept, provides a more efficient solution for energy transition. Vertically installed high-performance bifacial solar modules, which will greatly reduce the installation footprint. As the solar modules are laid in the east-west direction, there will be generation from sunrise to sunset, better yield than traditional photovoltaic power generation system.

In winter, especially in snowy areas, the solar modules of traditional photovoltaic power generation system will be covered by snow, but photovoltaic vertical bifacial power generation system won't be affected by that and can still supply power continuously and stably. Due to its small footprint, no damage to soil and vegetation, no impact on light transmittance, it can be used in limit land area occasions as well (for example: family yard fence, road isolation, agricultural planting, animal husbandry, industry etc.)

Parameter

Install Orientation	Landscape
Module Type	Frame
Wind Speed	45m/s
Tilt Angle	90°
Material	SUS304、ZAM275

Note: Can be customized according to actual needs.

Advantage

1. Continuous power generation in snowy winter
2. No-plowing snow when low snow, avoid solar module collapse when high snow
3. Make family yards, pastures and road fence creating photovoltaic benefits
4. High transmittance, maximize use the agrivoltaics land
5. No damage to soil and vegetation, realize the photovoltaic power station on prairie.
6. Use bifacial solar module, generate electricity in the morning and night, increased the annual yield by 10%

Application Scenarios



Courtyard



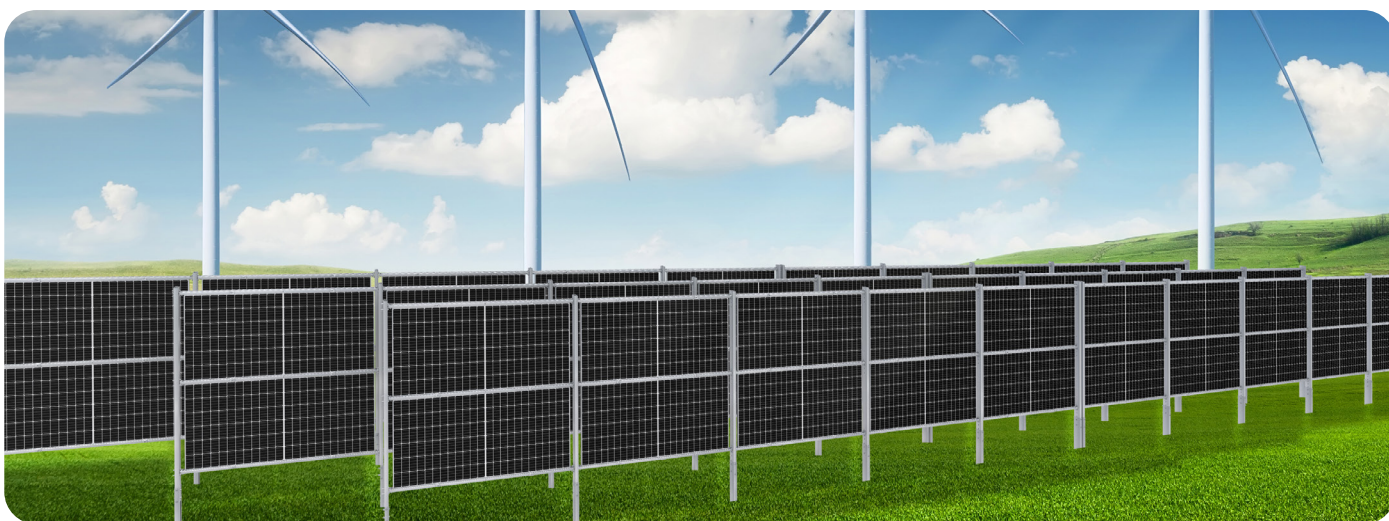
Pasture land



Farmland



Factory land



Power Plant

We also provide a variety of customization options:

1. Customizable foundation type: steel pile or concrete foundation can be selected according to requirements
2. It can be used with a variety of products, such as anti-climbing devices, advertising devices, ordinary isolation nets and other facilities

3. In order to meet the needs of different scenarios, the color of the bracket can be customized according to customer requirements
4. OEM/ODM Supported