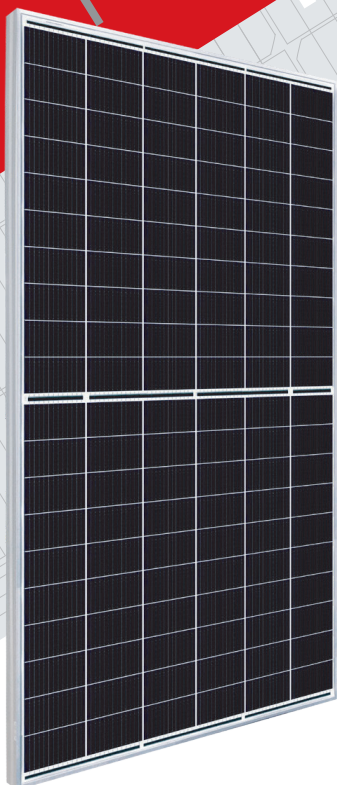


Mars Series

590W/595W/600W/605W/610W/

SUN 60M-H12

MBB HALF-CELL MONO PV MODULE
210MM CELLS



COMPREHENSIVE CERTIFICATES

IEC61215 / IEC61730 / IEC61701 / IEC62716 / IEC62804
ISO 9001: 2015 Quality management systems;
ISO 14001: 2015 Environmental management systems;
OHSAS 18001: 2007 Occupational health and safety management systems;

KEY SALIENT FEATURES



High output power



Better power generation under shadows



Strong anti-hot spot ability



Strong mechanical load capacity



Super strong frame



1500V system voltage

SUNERGY USA WORKS LLC

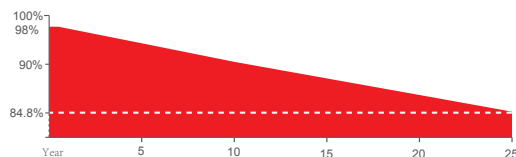
Founded in 2008, Sunergy is a manufacturer of high-performance photovoltaic products. With 12 manufacturing bases and more than 20 branches around the world, the company's business covers modules, photovoltaic power stations and EPC. Sunergy products are available in over 120 countries and regions and are used extensively in ground-mounted power plants, commercial & industrial rooftop PV systems and residential rooftop PV systems.

QUALIFICATIONS AND CERTIFICATES



LINEAR PERFORMANCE WARRANTY

- 12 Years Manufacturing Warranty
- 12 Years 92% Power Output
- 25 Years 84.8% Power Output

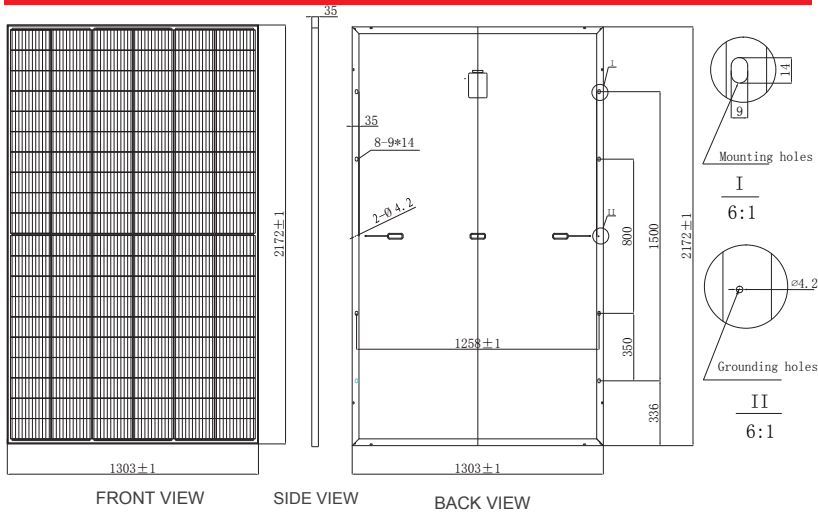


SUNERGY USA WORKS LLC
www.sunergyworks.com



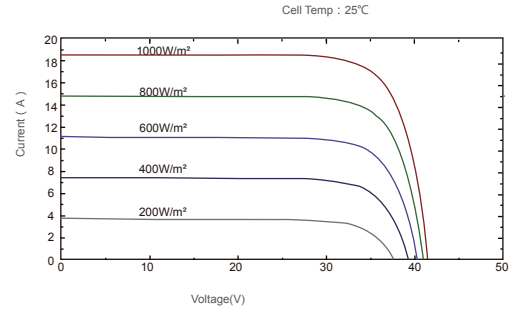
Mars Series SUN 60M-H12

MECHANICAL DRAWINGS

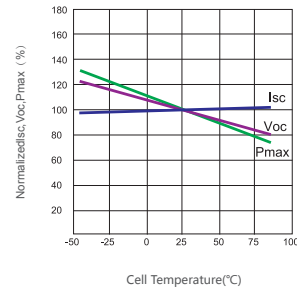


I-V CURVES

I-V Curves at SUN600-60M-H12 at different Irradiances



Power voltage current curve at different temperature



MECHANICAL SPECIFICATION

Cell Type	Mono Crystalline 210x105mm
Number Of Cells	120 (6x20)
Dimensions(AxBxC)	2172x1303x35mm
Weights	31.0kg
Glass	3.2mm Tempered Low Iron Glass
Aluminium Frame	Anodised Aluminium
Junction Box	Split Junction Box (IP68 ,three diode)
Connector	Mc4 Compatible
Output Cables	4.0mm²,+300mm,-300mm Customized Length

PACKING CONFIGURATION

Container	40' HQ
Pieces Per Pallet	31
Pallets Per Container	17
Pieces Per Container	527

ELECTRICAL CHARACTERISTICS

Module Type	590W		595W		600W		605W		610W	
	STC	NOCT	STC	NOCT	STC	NOCT	STC	NOCT	STC	NOCT
Maximum Power At STC(Pmax)	590W	447.2W	595W	451.0W	600W	454.8W	605W	458.6W	610W	462.3W
Short Circuit Current(Isc)	18.33A	14.81A	18.43A	14.89A	18.53A	14.97A	18.58A	15.01A	18.62A	15.04A
Open Circuit Voltage(Voc)	41.1V	38.5V	41.3V	38.7V	41.5V	38.9V	41.7V	39.1V	41.9V	39.2V
Maximum Power Current(Imp)	17.30A	14.04A	17.40A	14.12A	17.50A	14.19A	17.54A	14.23A	17.58A	14.26A
Maximum Power Voltage(Vmpp)	34.1V	31.9V	34.2V	32.0V	34.3V	32.0V	34.5V	32.2V	34.7V	32.4V
Module Efficiency	20.85%		21.02%		21.20%		21.38%		21.55%	
Power Tolerance	0~+5W		0~+5W		0~+5W		0~+5W		0~+5W	
Maximum System Voltage	VDC 1500V									
Maximum Series Fuse	30A									
Increased Snowload Acc.to Iec 61215	5400Pa									
Operating Temperature	-40~+85°C									
Number Of Bypass Diodes	3									
Norminal Operating Cell Temperature(Noct)	45°C±2°C									
Temperature Coefficient Of Pmax	-0.34%/°C									
Temperature Coefficient Of Voc	-0.26%/°C									
Temperature Coefficient Of Isc	0.04%/°C									

STC: 1000W/m2 irradiance, 25°C cell temperature, AM1.5. NOCT: Irradiance at 800W/m² , Ambient Temperature 20°C , wind speed 1m/s .



SUNERGY USA WORKS LLC
www.sunergyworks.com

